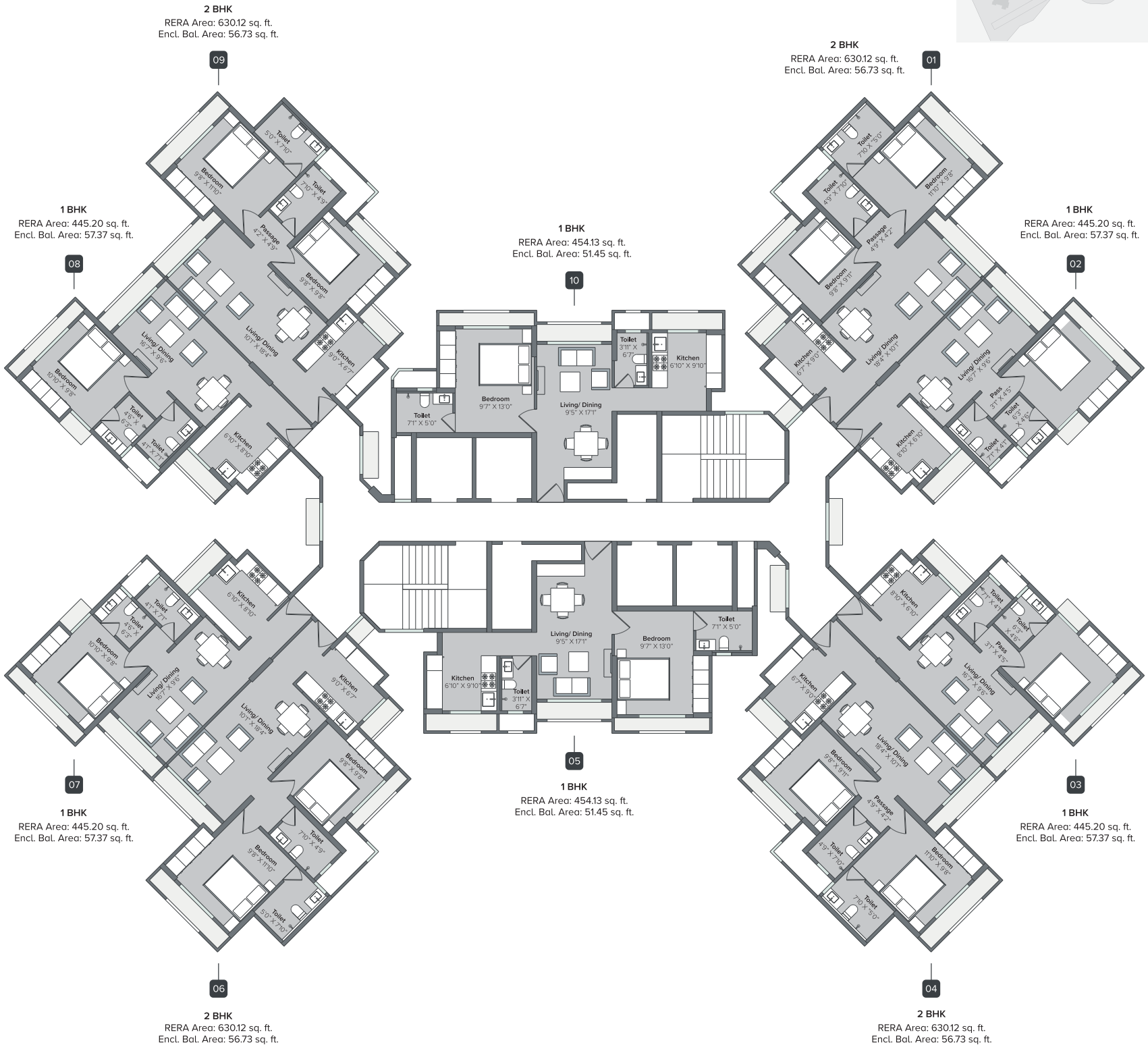
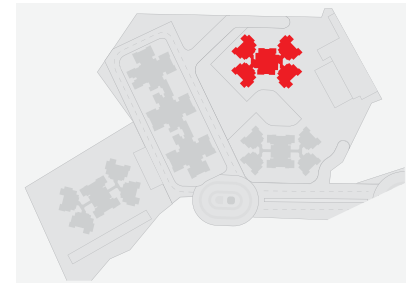


Sapphire

1st to 16th Floor

Typical Floor Plan



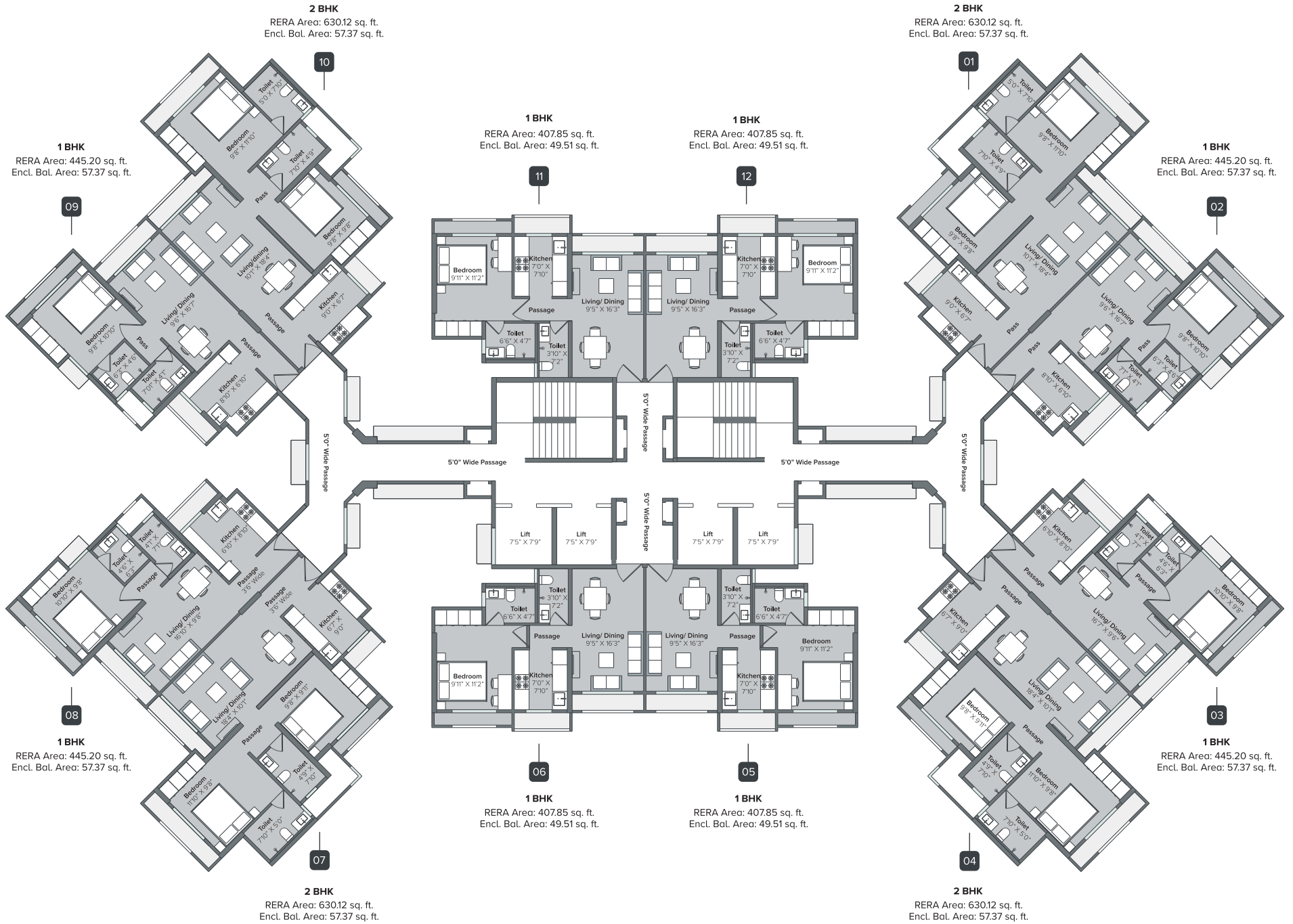
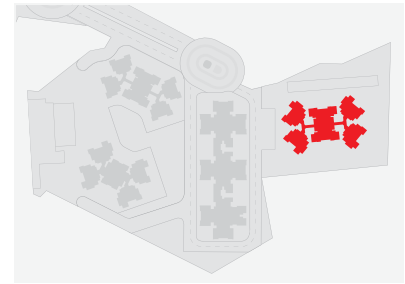
Maha RERA No.: P51700001265

Disclaimer: The floor plans are as per the approved plans and specifications as of date. These plans may vary by +/- 3% and are subject to changes. The furniture, accessories, etc. shown in the plans does not form a part of the offering. Customers are requested to visit the site office and apprise themselves of all the necessary details prior to making any purchase decisions.

Emerald

1st to 19th Floor

Typical Floor Plan



Maha RERA No.: P51700000686

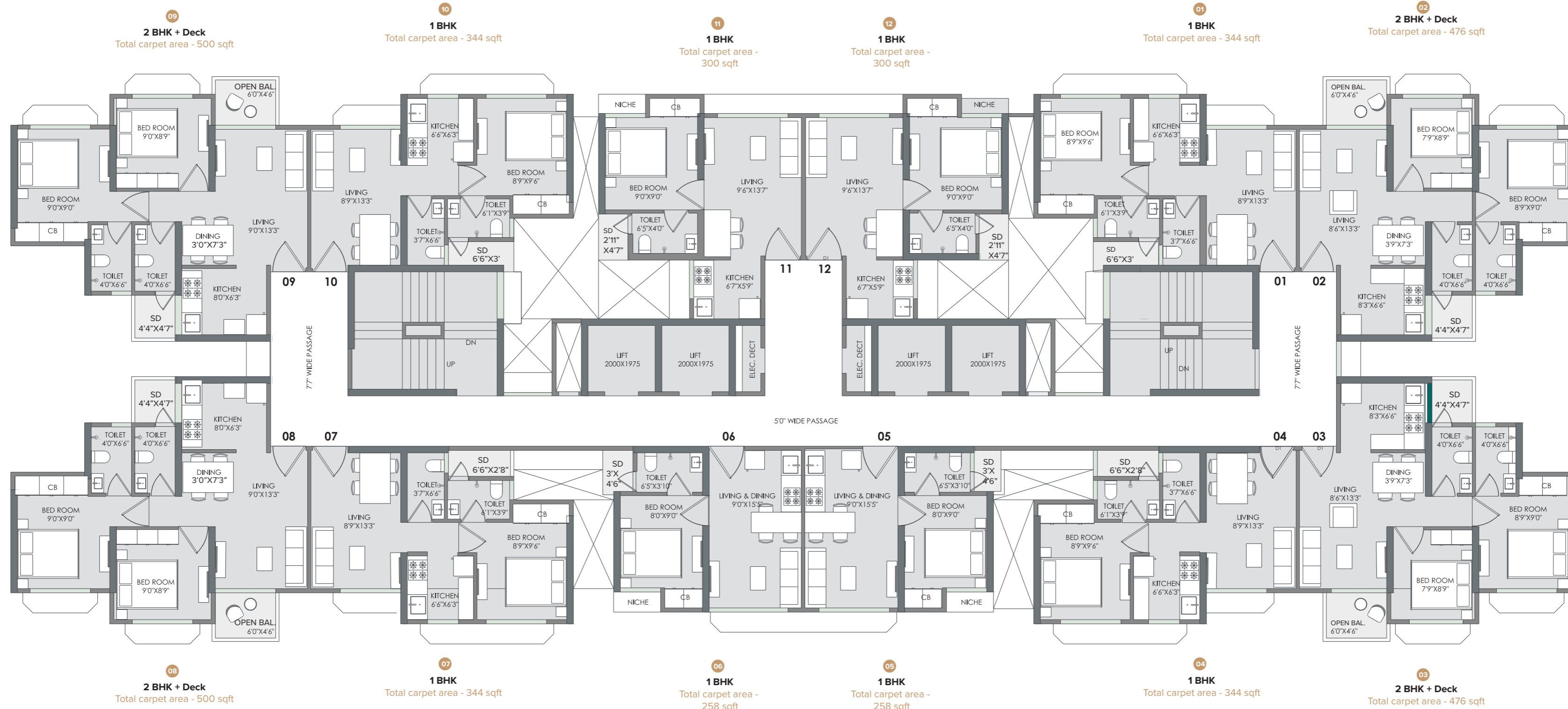
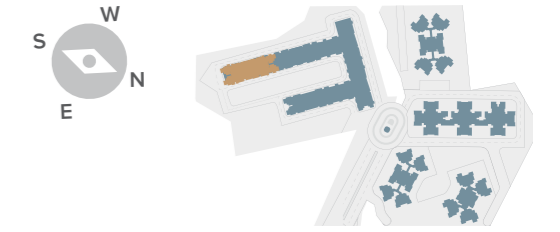
Disclaimer: The floor plans are as per the approved plans and specifications as of date. These plans may vary by +/- 3% and are subject to changes. The furniture, accessories, etc. shown in the plans does not form a part of the offering. Customers are requested to visit the site office and apprise themselves of all the necessary details prior to making any purchase decisions.

Floors 9, 12 & 17 are refuge floors and flat numbers 9 & 10 on each of these floors are not available for sale.

RUBY

Typical Floor Plan

Floors 1, 3, 5, 7, 9, 11, 15, 17 & 19



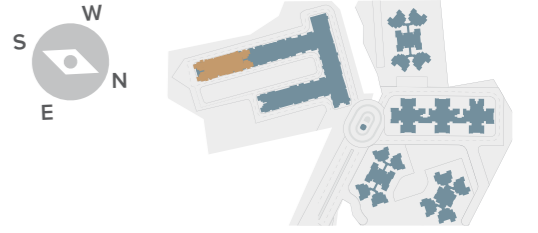
Maha RERA No.: P51700021189

Disclaimer: The floor plans are as per the approved plans and specifications as of date. These plans may vary by +/- 3% and are subject to changes. The furniture, accessories, etc. shown in the plans does not form a part of the offering. Customers are requested to visit the site office and apprise themselves of all the necessary details prior to making any purchase decisions.

RUBY

Typical Floor Plan

Floors 2, 4, 6, 10, 12, 14, 16, 20 & 22



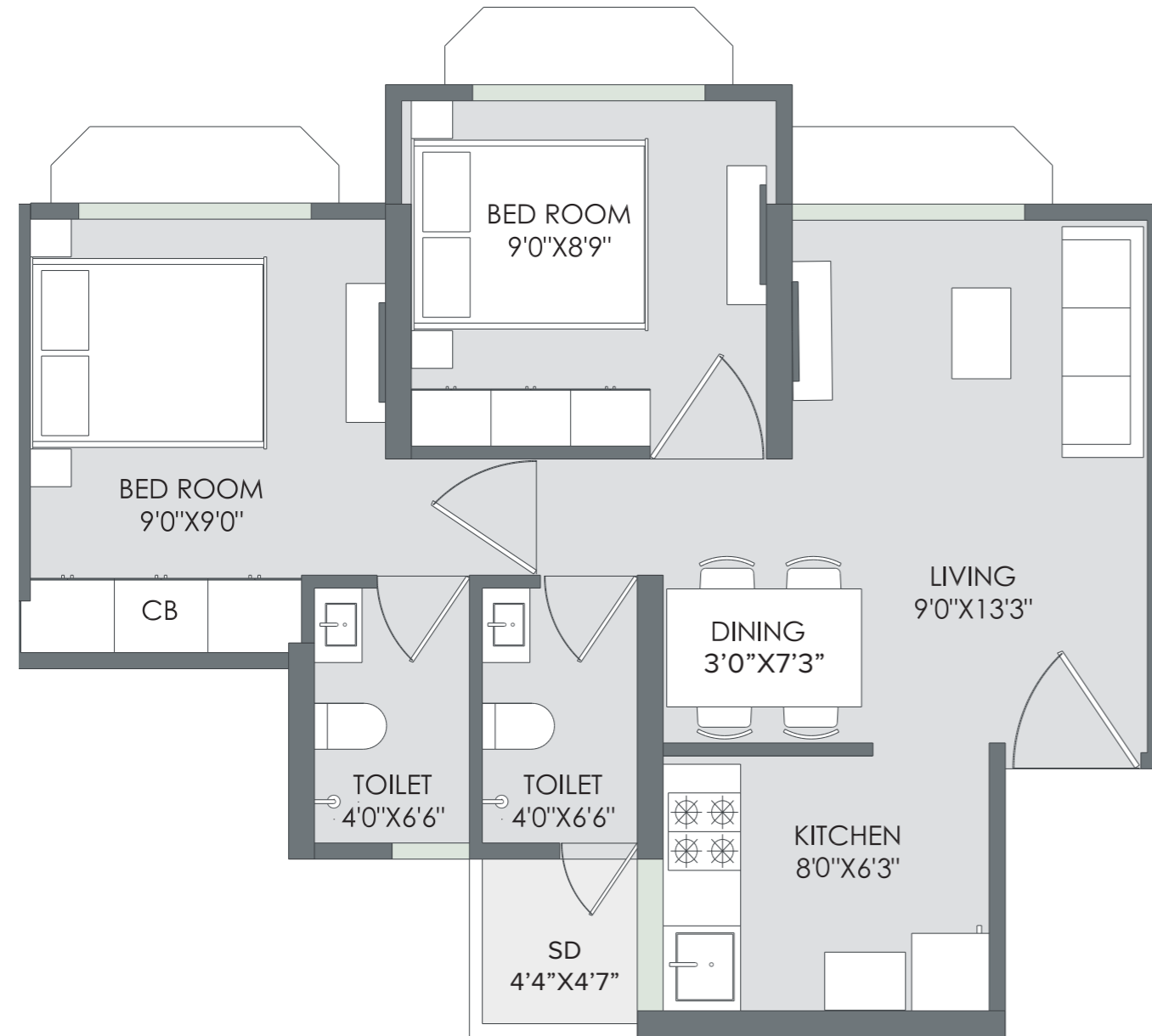
Maha RERA No.: P51700021189

Disclaimer: The floor plans are as per the approved plans and specifications as of date. These plans may vary by +/- 3% and are subject to changes. The furniture, accessories, etc. shown in the plans does not form a part of the offering. Customers are requested to visit the site office and apprise themselves of all the necessary details prior to making any purchase decisions.

Unit Plan

2 BHK

Total carpet area - 471 sqft



This configuration is available in flat number 08 & 09
on 2nd, 4th, 6th, 8th, 10th, 12th, 14th, 16th, 18th, 20th & 22nd floor

Maha RERA No.: P51700021189

Disclaimer: The floor plans are as per the approved plans and specifications as of date. These plans may vary by +/- 3% and are subject to changes. The furniture, accessories, etc. shown in the plans does not form a part of the offering. Customers are requested to visit the site office and apprise themselves of all the necessary details prior to making any purchase decisions.

Unit Plan

2 BHK+ Deck

Total carpet area - 500 sqft



This configuration is available in flat number 08 & 09
on 1st, 3rd, 5th, 7th, 9th, 11th, 13th, 15th, 17th, 19th floor

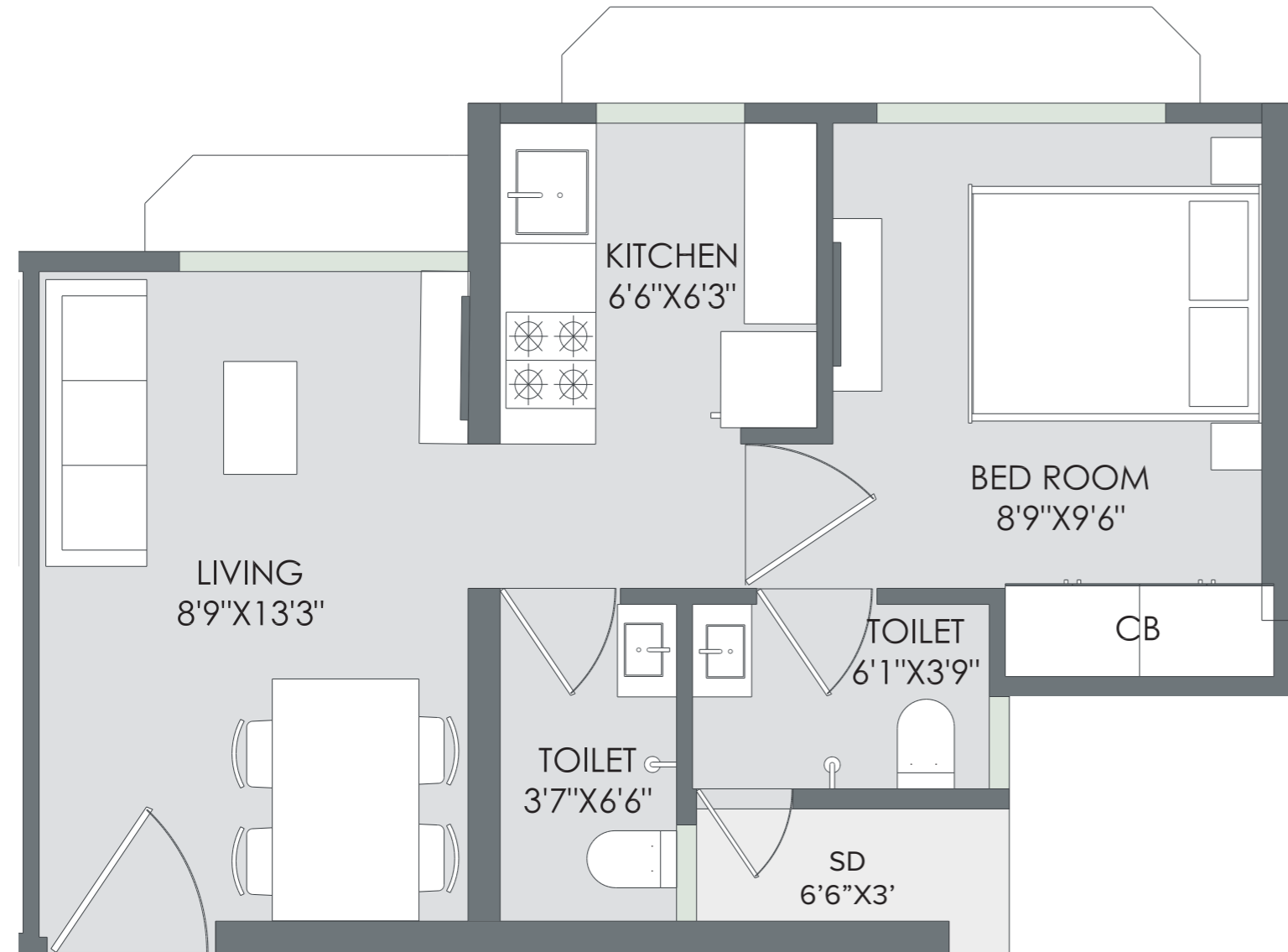
Maha RERA No.: P51700021189

Disclaimer: The floor plans are as per the approved plans and specifications as of date. These plans may vary by +/- 3% and are subject to changes. The furniture, accessories, etc. shown in the plans does not form a part of the offering. Customers are requested to visit the site office and apprise themselves of all the necessary details prior to making any purchase decisions.

Unit Plan

1 BHK

Total carpet area - 344 sqft



This configuration is available in flat number 01, 04, 07 & 10 on 1st, 3rd, 5th, 7th, 9th, 11th, 13th, 15th, 17th, 19th floor

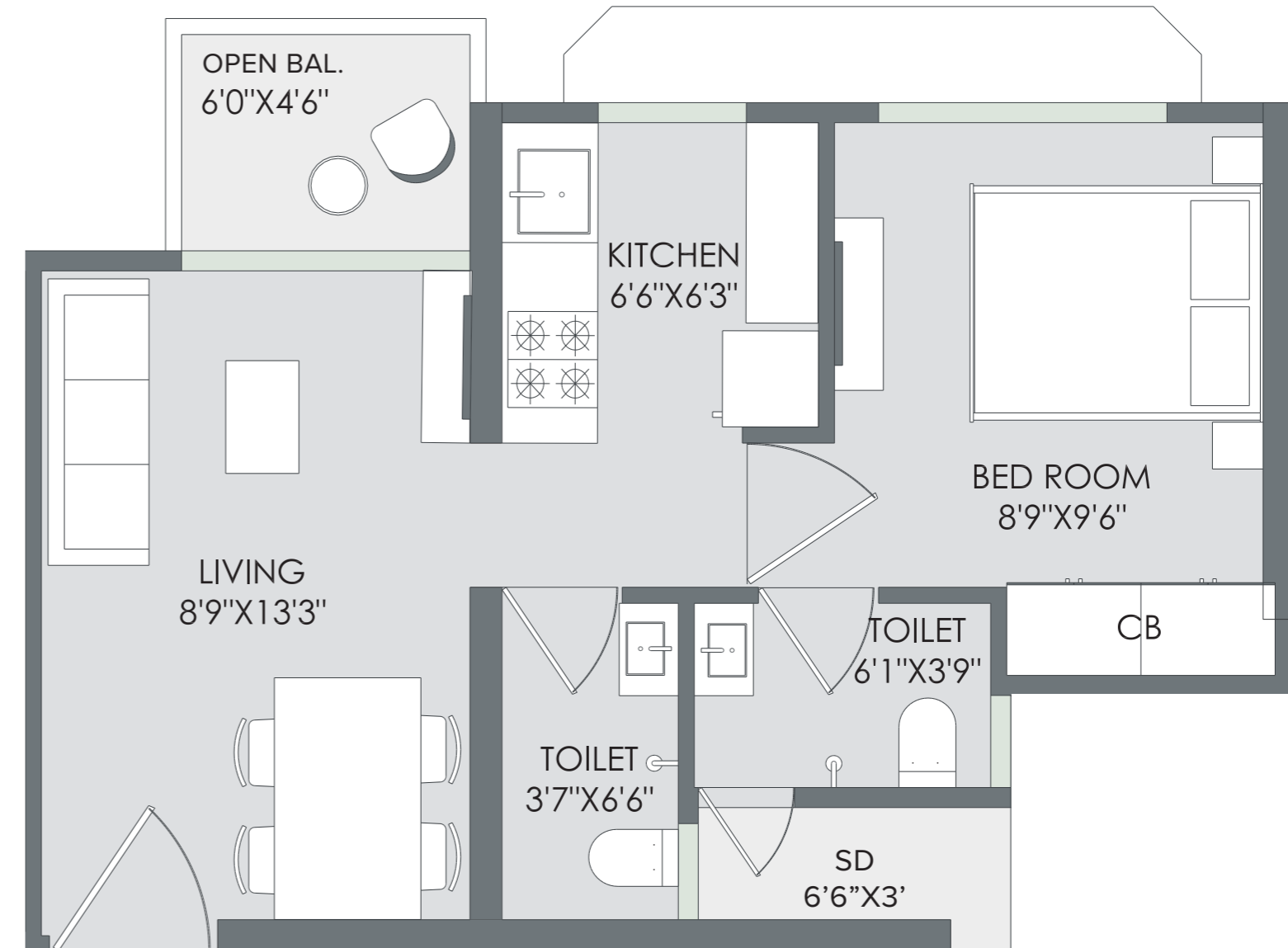
Maha RERA No.: P51700021189

Disclaimer: The floor plans are as per the approved plans and specifications as of date. These plans may vary by +/- 3% and are subject to changes. The furniture, accessories, etc. shown in the plans does not form a part of the offering. Customers are requested to visit the site office and apprise themselves of all the necessary details prior to making any purchase decisions.

Unit Plan

1 BHK + Deck

Total carpet area - 372 sqft



This configuration is available in flat number 01, 04, 07 & 10 on 2nd, 4th, 6th, 8th, 10th, 12th, 14th, 16th, 18th, 20th & 22nd floor

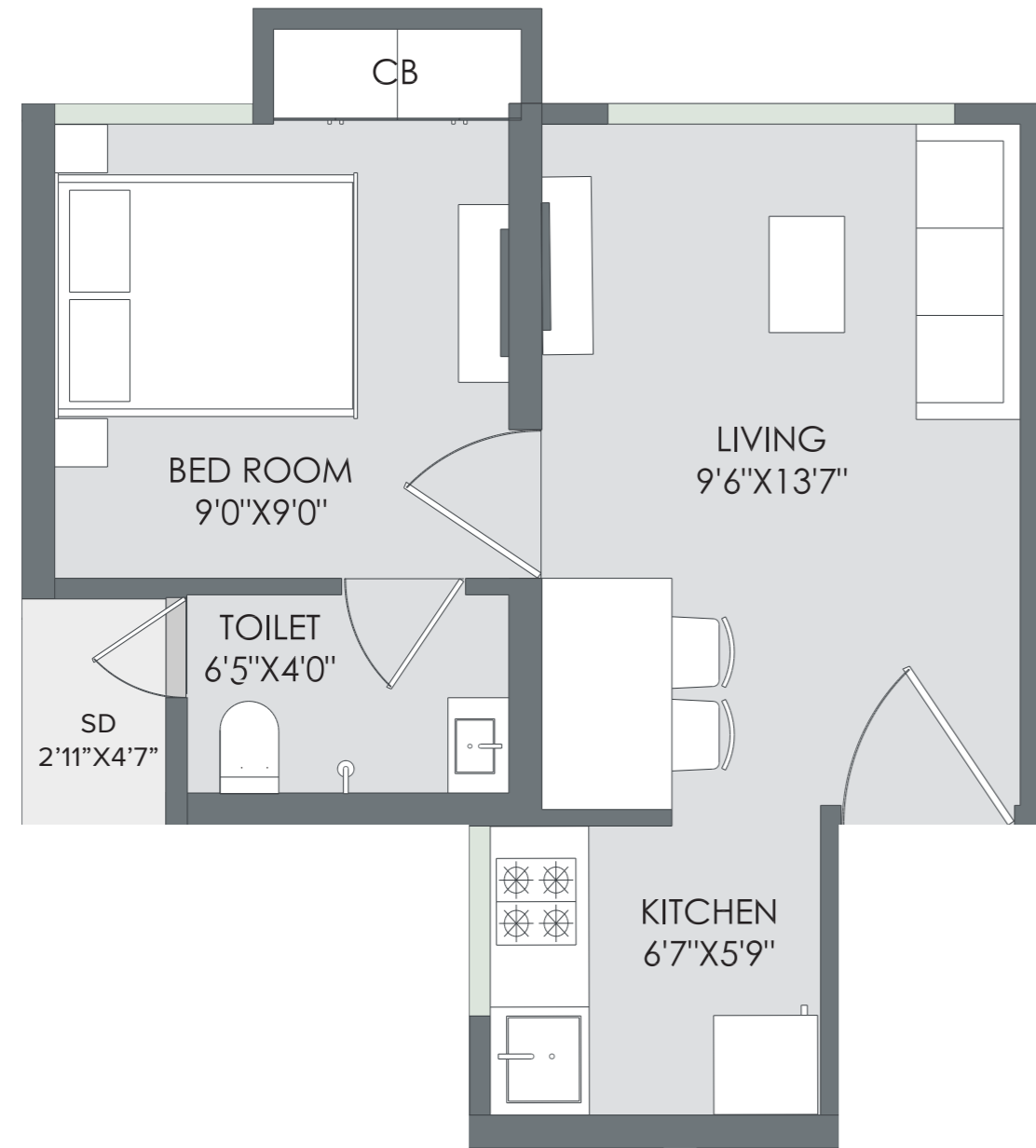
Maha RERA No.: P51700021189

Disclaimer: The floor plans are as per the approved plans and specifications as of date. These plans may vary by +/- 3% and are subject to changes. The furniture, accessories, etc. shown in the plans does not form a part of the offering. Customers are requested to visit the site office and apprise themselves of all the necessary details prior to making any purchase decisions.

Unit Plan

1 BHK

Total carpet area - 300 sqft



This configuration is available in flat number 11 & 12.
(Flat number 11 on refuge floor 8th, 13th & 18th is not for sale)

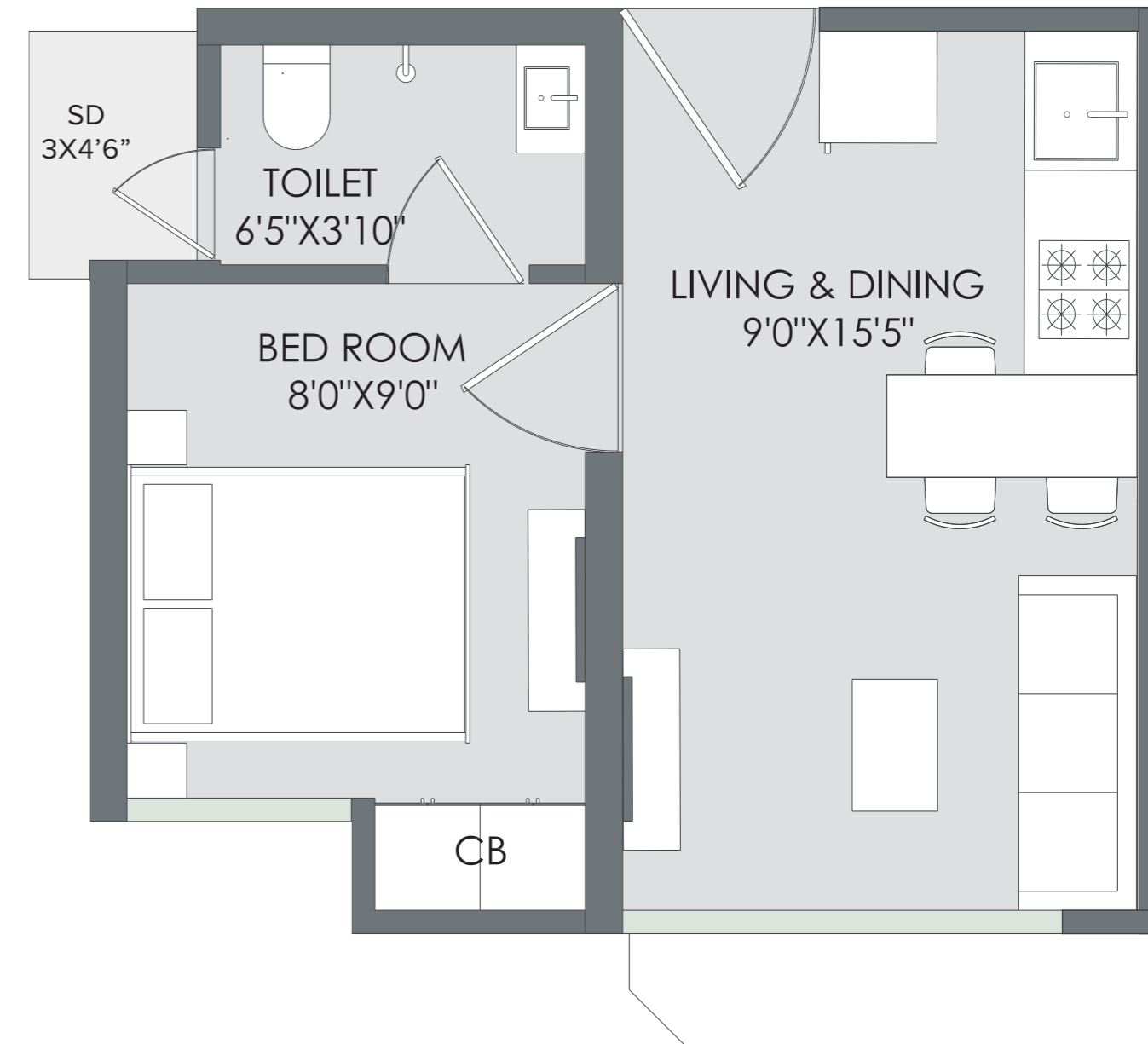
Maha RERA No.: P51700021189

Disclaimer: The floor plans are as per the approved plans and specifications as of date. These plans may vary by +/- 3% and are subject to changes. The furniture, accessories, etc. shown in the plans does not form a part of the offering. Customers are requested to visit the site office and apprise themselves of all the necessary details prior to making any purchase decisions.

Unit Plan

1 BHK

Total carpet area - 258 sqft



This configuration is available in flat number 05 & 06.

Maha RERA No.: P51700021189

Disclaimer: The floor plans are as per the approved plans and specifications as of date. These plans may vary by +/- 3% and are subject to changes. The furniture, accessories, etc. shown in the plans does not form a part of the offering. Customers are requested to visit the site office and apprise themselves of all the necessary details prior to making any purchase decisions.

Unit Plan

2 BHK

Total carpet area - 449 sqft



**This configuration is available in flat number 02 & 03
on 2nd, 4th, 6th, 8th, 10th, 12th, 14th, 16th, 18th, 20th & 22nd floor**

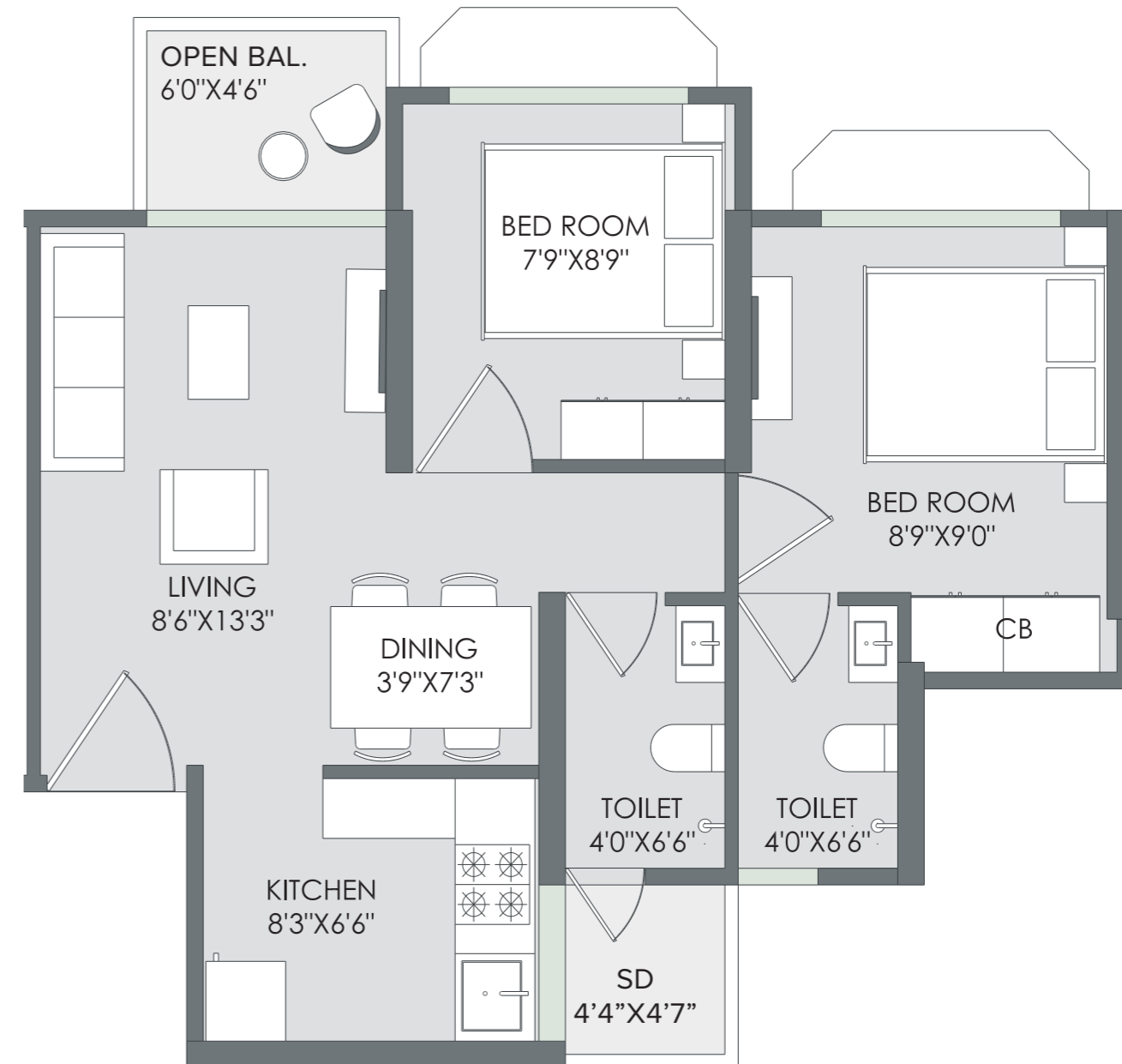
Maha RERA No.: P51700021189

Disclaimer: The floor plans are as per the approved plans and specifications as of date. These plans may vary by +/- 3% and are subject to changes. The furniture, accessories, etc. shown in the plans does not form a part of the offering. Customers are requested to visit the site office and apprise themselves of all the necessary details prior to making any purchase decisions.

Unit Plan

2 BHK + Deck

Total carpet area - 476sqft



**This configuration is available in flat number 02 & 03
on 1st, 3rd, 5th, 7th, 9th, 11th, 13th, 15th, 17th, 19th floor**

Maha RERA No.: P51700021189

Disclaimer: The floor plans are as per the approved plans and specifications as of date. These plans may vary by +/- 3% and are subject to changes. The furniture, accessories, etc. shown in the plans does not form a part of the offering. Customers are requested to visit the site office and apprise themselves of all the necessary details prior to making any purchase decisions.