

PHASE 1

FLOOR PLANS



THE TOWNSHIP

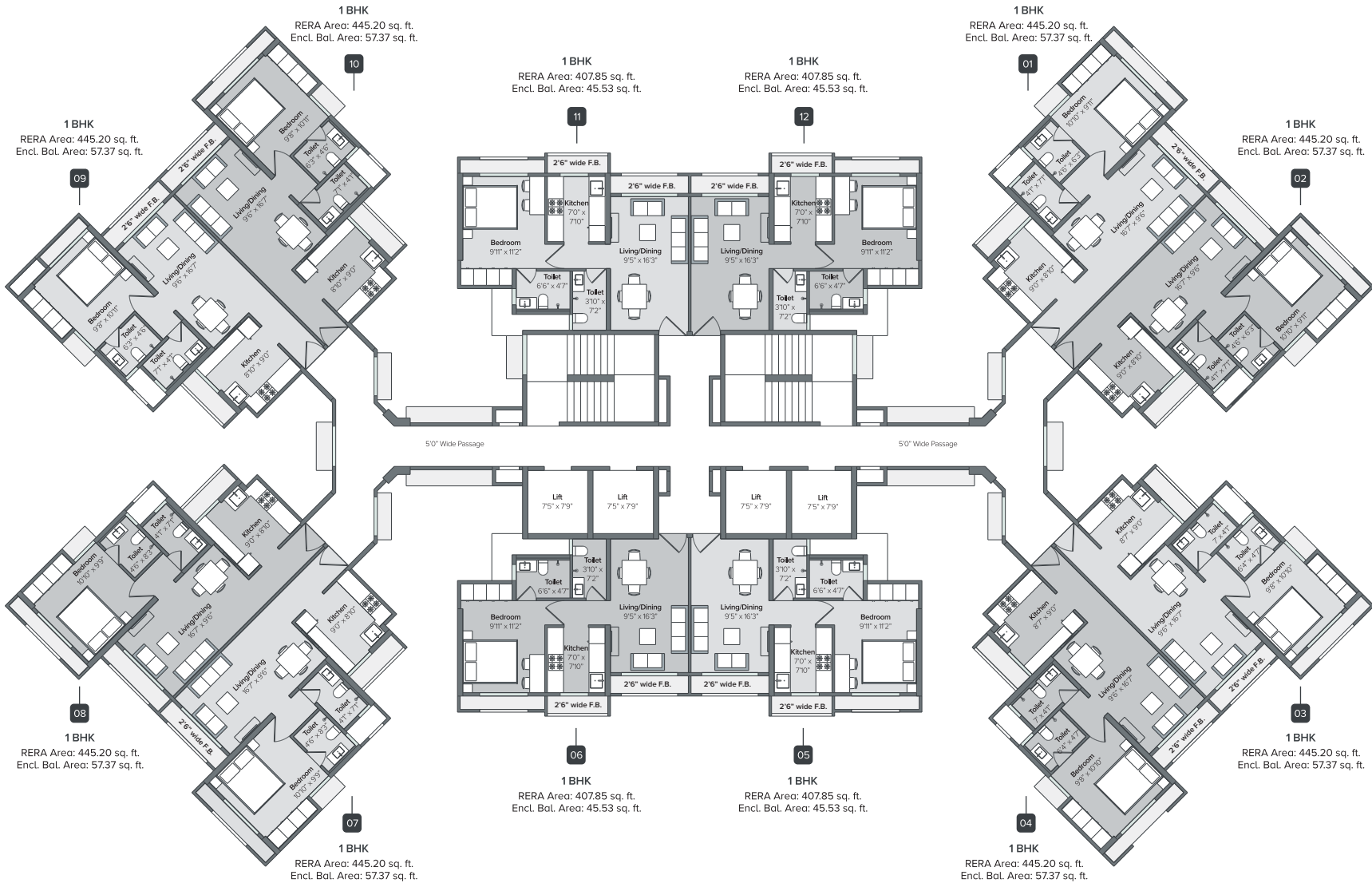
Spread across a vast expanse of lush green freehold land, Nextown provides one of the best integrated township living experiences in all of Kalyn-Shil.

*The Layout Plan is for representational purposes only & are not according to scale



Coral

1st to 16th Floor
Typical Floor Plan



Floors 9 & 12 are refuge floors and the following flats are not available for sale:
Flat numbers 11 & 12 on 9th floor.
Flat number 12 on the 12th floor.

Disclaimer: The floor plans are as per the approved plans and specifications as of date. These plans may vary by +/- 3% and are subject to changes. The furniture, accessories, etc. shown in the plans does not form a part of the offering. Customers are requested to visit the site office and apprise themselves of all the necessary details prior to making any purchase decisions.

Sapphire

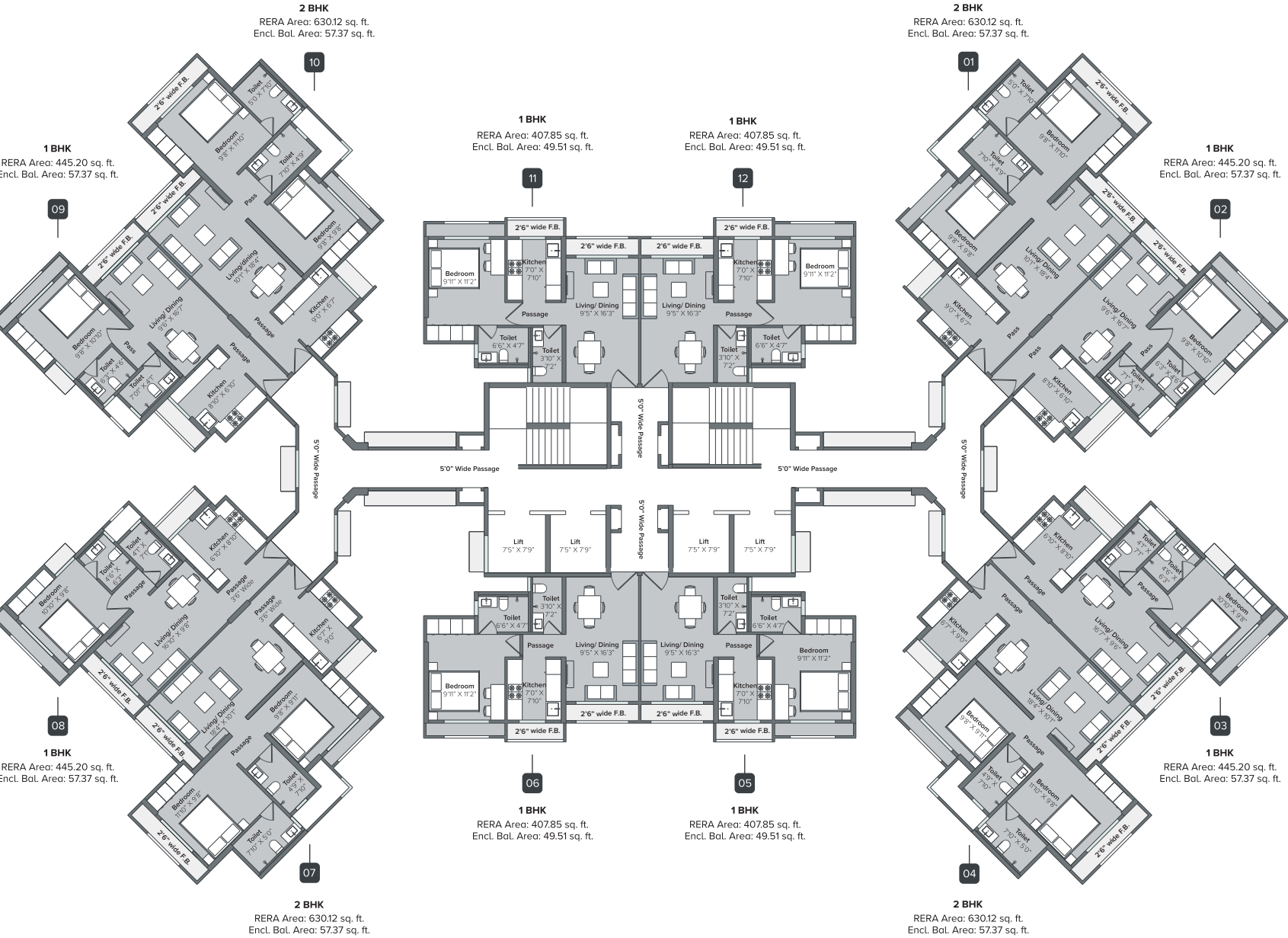
1st to 16th Floor
Typical Floor Plan



Floors 9 & 12 are refuge floors and flat number 9 on each of these floors are not available for sale.

Disclaimer: The floor plans are as per the approved plans and specifications as of date. These plans may vary by +/- 3% and are subject to changes. The furniture, accessories, etc. shown in the plans does not form a part of the offering. Customers are requested to visit the site office and apprise themselves of all the necessary details prior to making any purchase decisions.

Emerald
1st to 19th Floor
Typical Floor Plan



Floors 9, 12 & 17 are refuge floors and flat numbers 9 & 10 on each of these floors are not available for sale.

Disclaimer: The floor plans are as per the approved plans and specifications as of date. These plans may vary by +/- 3% and are subject to changes. The furniture, accessories, etc. shown in the plans does not form a part of the offering. Customers are requested to visit the site office and apprise themselves of all the necessary details prior to making any purchase decisions.

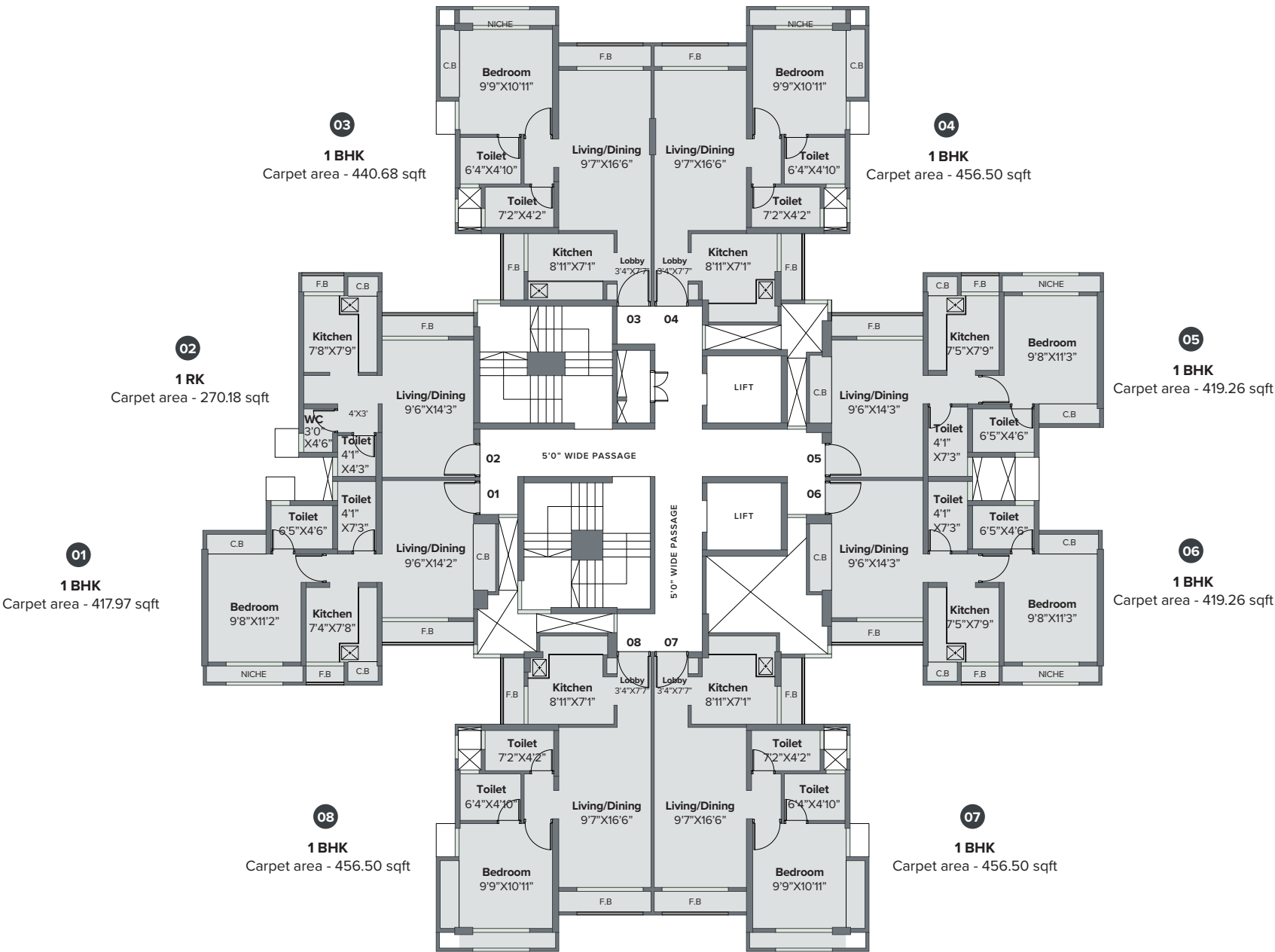
OPAL
Floors 1st to 10th
Typical Floor Plan



Flat No. 907 & 908 on 9th floor are refuge and not for sale

Disclaimer: The floor plans are as per the approved plans and specifications as of date. These plans may vary by +/- 3% and are subject to changes. The furniture, accessories, etc. shown in the plans does not form a part of the offering. Customers are requested to visit the site office and apprise themselves of all the necessary details prior to making any purchase decisions.

Topaz
Floors 1st to 10th
Typical Floor Plan



Disclaimer: The floor plans are as per the approved plans and specifications as of date. These plans may vary by +/- 3% and are subject to changes. The furniture, accessories, etc. shown in the plans does not form a part of the offering. Customers are requested to visit the site office and apprise themselves of all the necessary details prior to making any purchase decisions.

Flat No. 907 & 908 on 9th floor are refuge and not for sale

Amber
Floors 1st to 10th
Typical Floor Plan



Disclaimer: The floor plans are as per the approved plans and specifications as of date. These plans may vary by +/- 3% and are subject to changes. The furniture, accessories, etc. shown in the plans does not form a part of the offering. Customers are requested to visit the site office and apprise themselves of all the necessary details prior to making any purchase decisions.

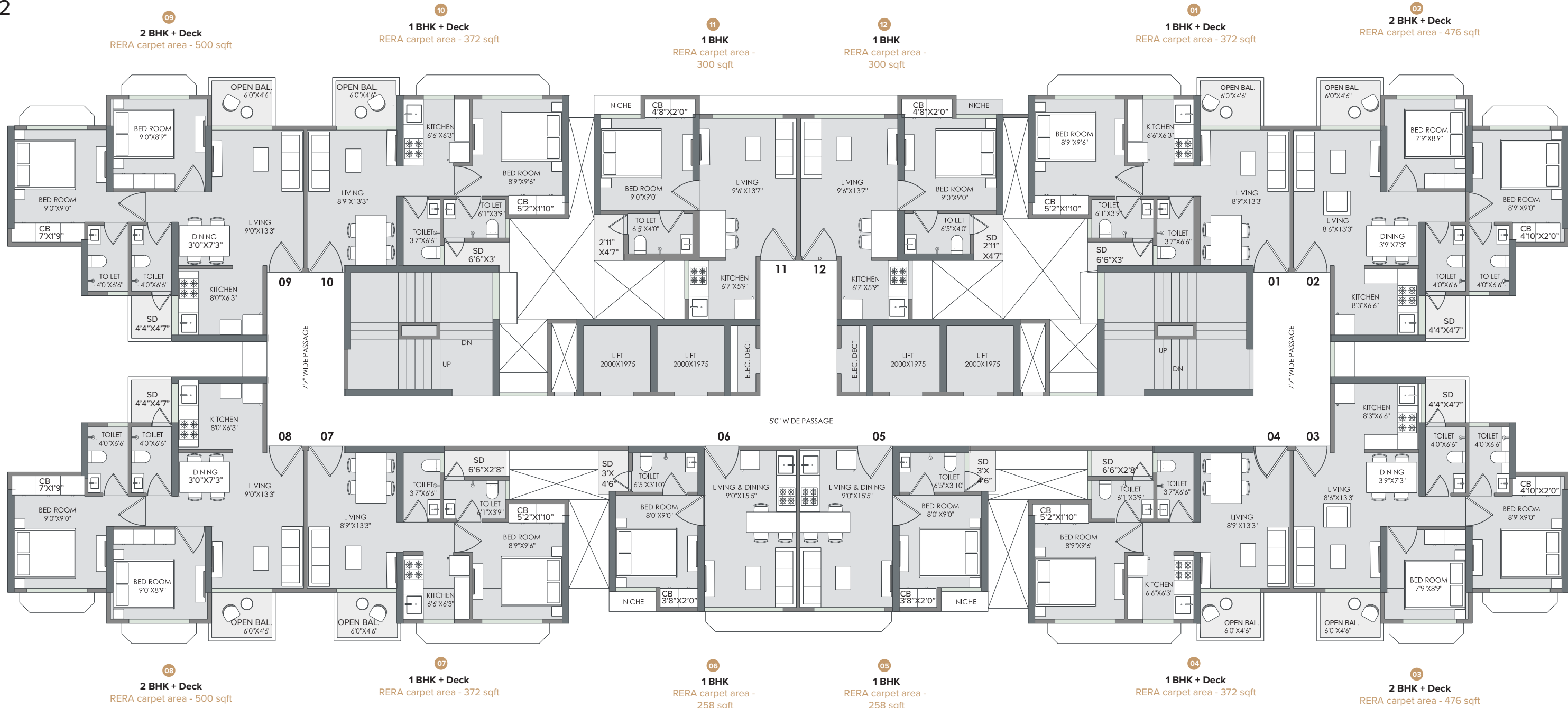
Flat No. 907 & 908 on 9th floor are refuge and not for sale



PHASE 2

FLOOR PLANS

Typical Floor Plan Floors 2 to 22



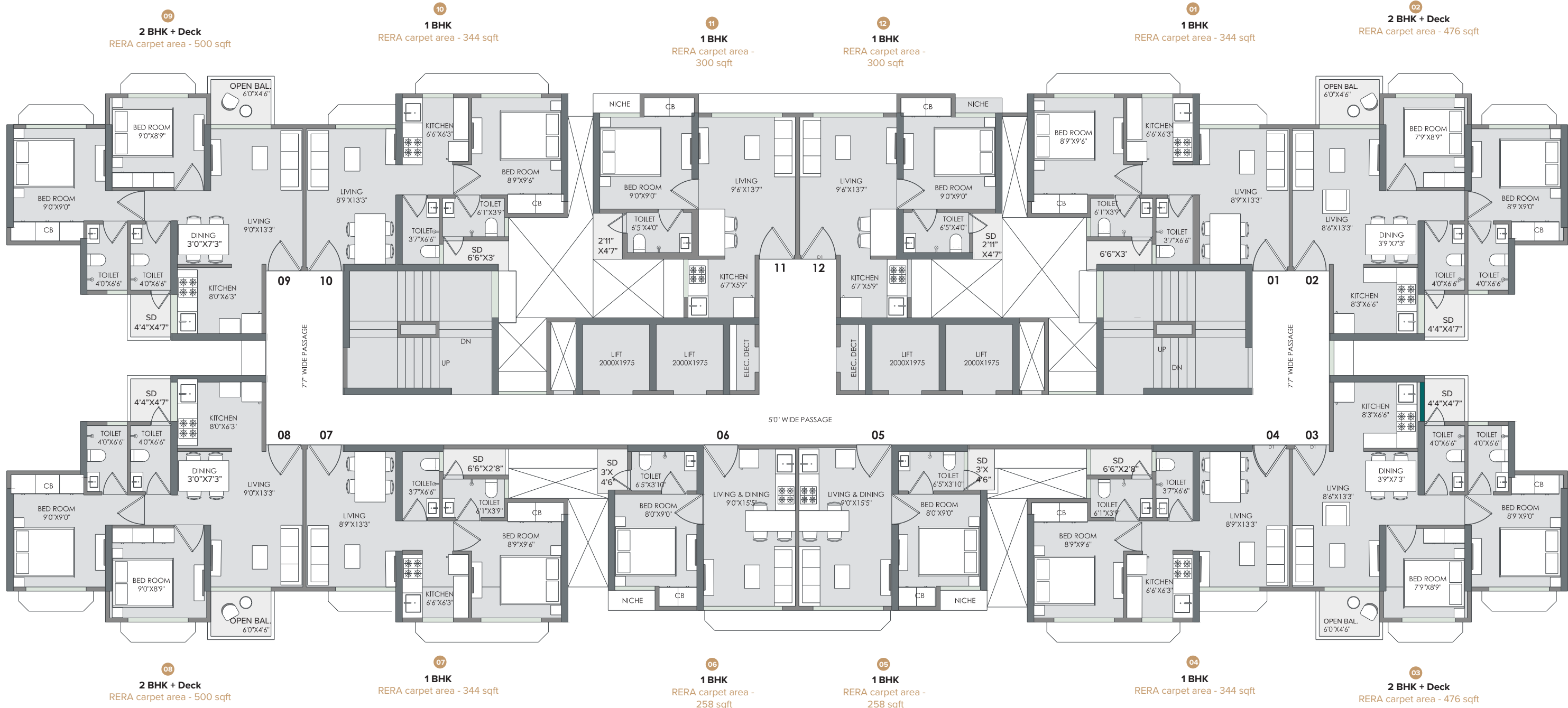
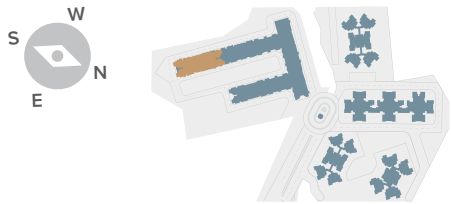
Disclaimer: The floor plans are as per the approved plans and specifications as of date. These plans may vary by +/- 3% and are subject to changes. The furniture, accessories, etc. shown in the plans does not form a part of the offering. Customers are requested to visit the site office and apprise themselves of all the necessary details prior to making any purchase decisions.

GARDEN SIDE

RUBY

Typical Floor Plan

Floors 1, 3, 5, 7, 9, 11, 15, 17 & 19

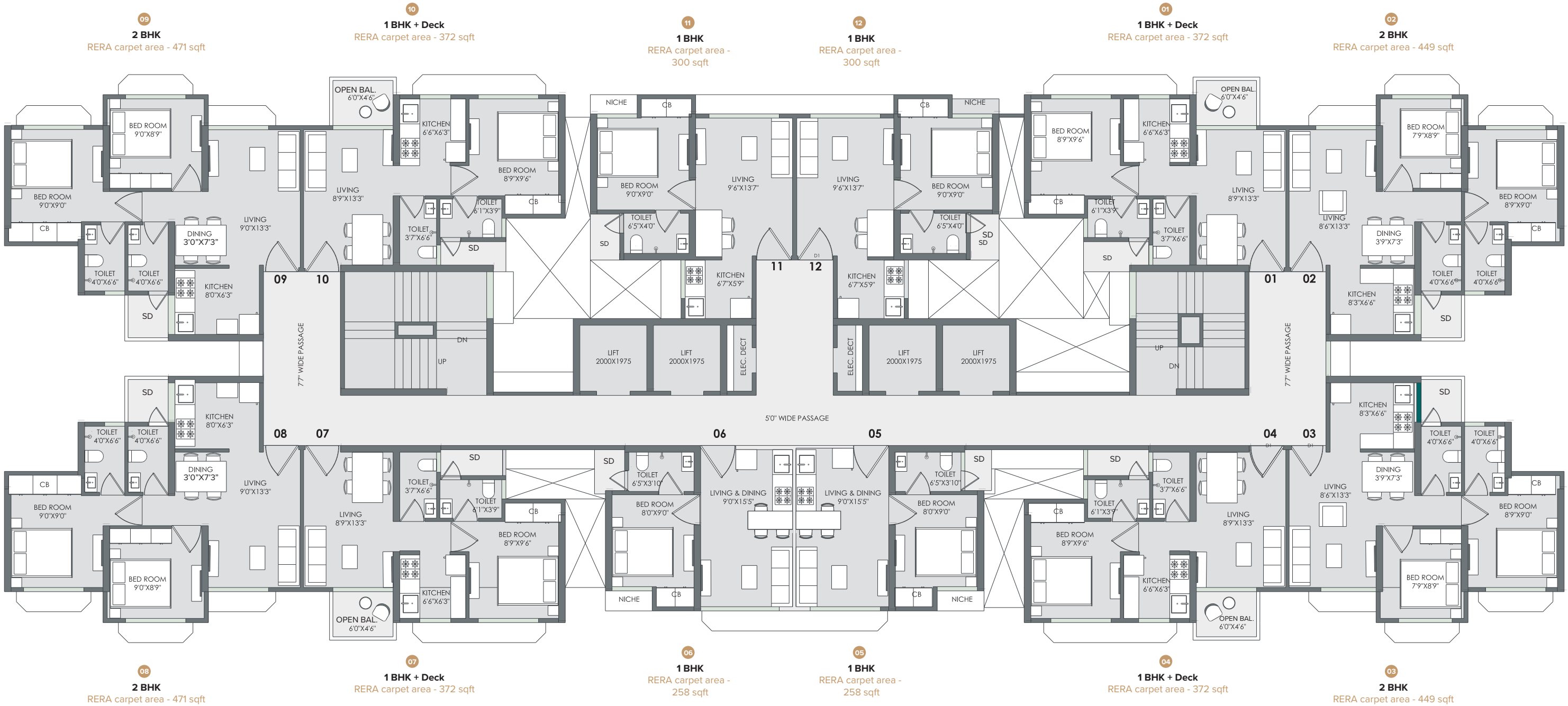
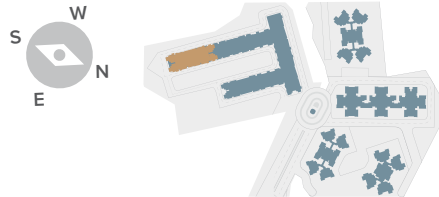


Disclaimer: The floor plans are as per the approved plans and specifications as of date. These plans may vary by +/- 3% and are subject to changes. The furniture, accessories, etc. shown in the plans does not form a part of the offering. Customers are requested to visit the site office and apprise themselves of all the necessary details prior to making any purchase decisions.

RUBY

Typical Floor Plan

Floors 2, 4, 6, 10, 12, 14, 16, 20 & 22

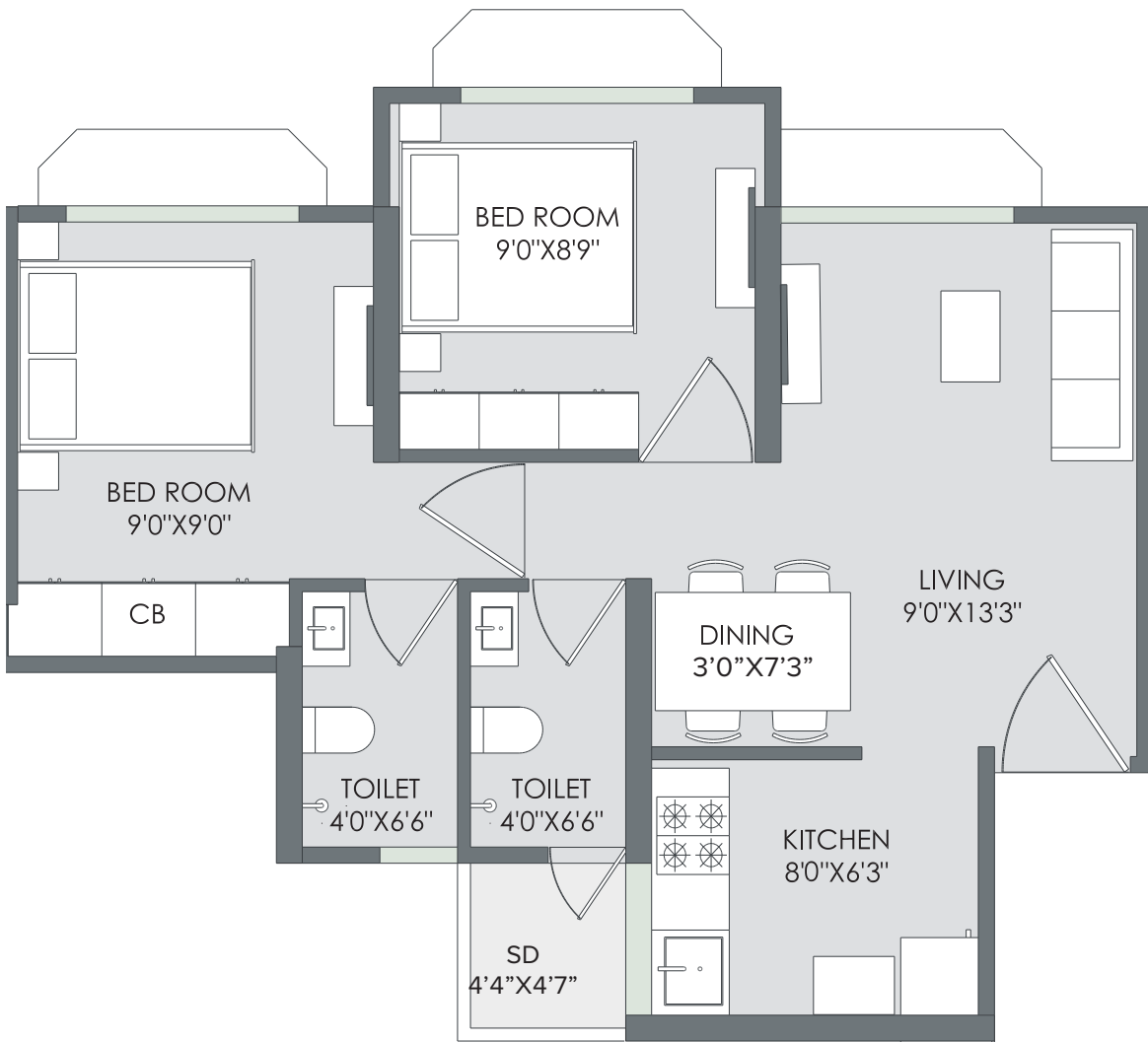


Disclaimer: The floor plans are as per the approved plans and specifications as of date. These plans may vary by +/- 3% and are subject to changes. The furniture, accessories, etc. shown in the plans does not form a part of the offering. Customers are requested to visit the site office and apprise themselves of all the necessary details prior to making any purchase decisions.

Unit Plan (Ruby)

2 BHK

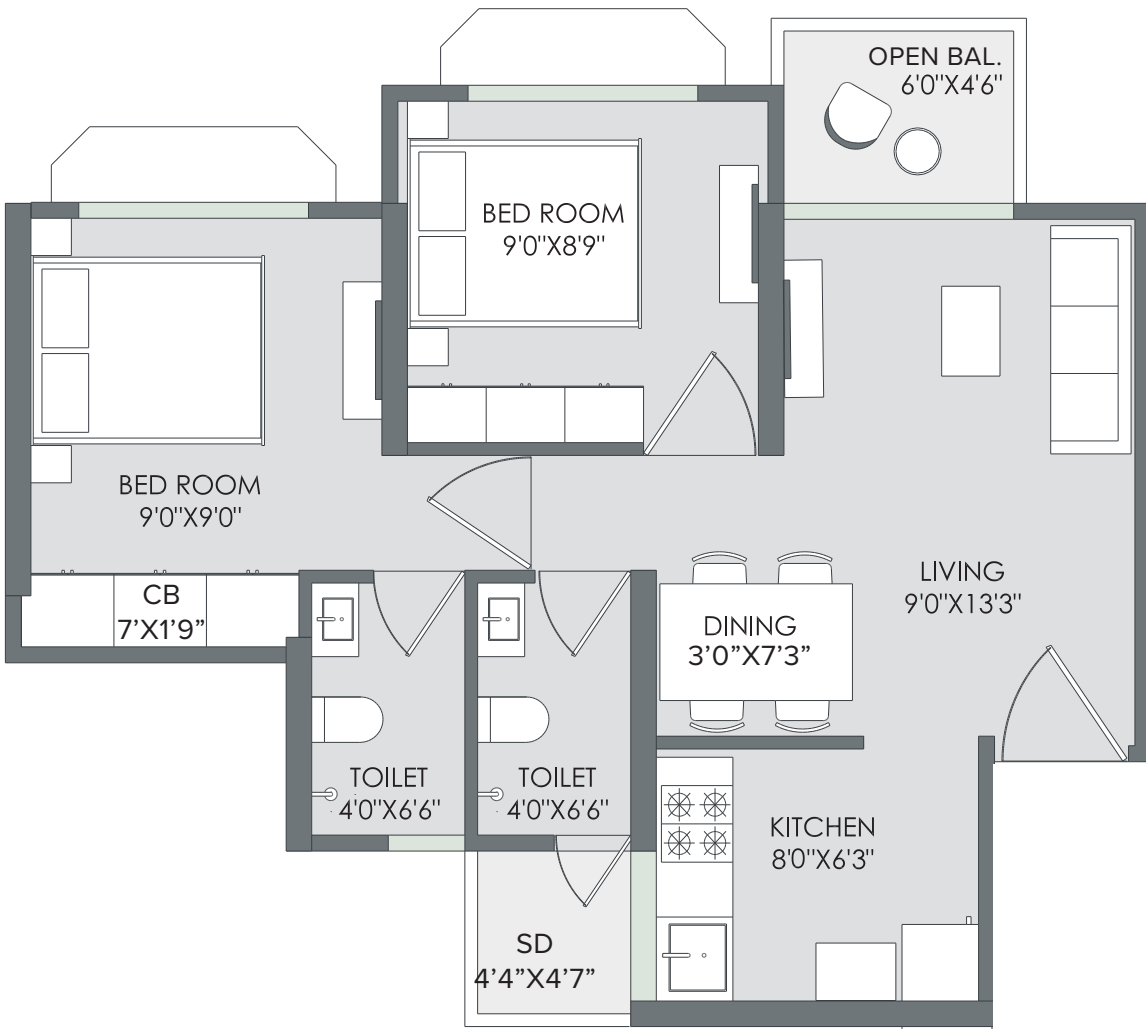
RERA carpet area - 471 sqft



Unit Plan (Jasper & Ruby)

2 BHK+ Deck

RERA carpet area - 500 sqft



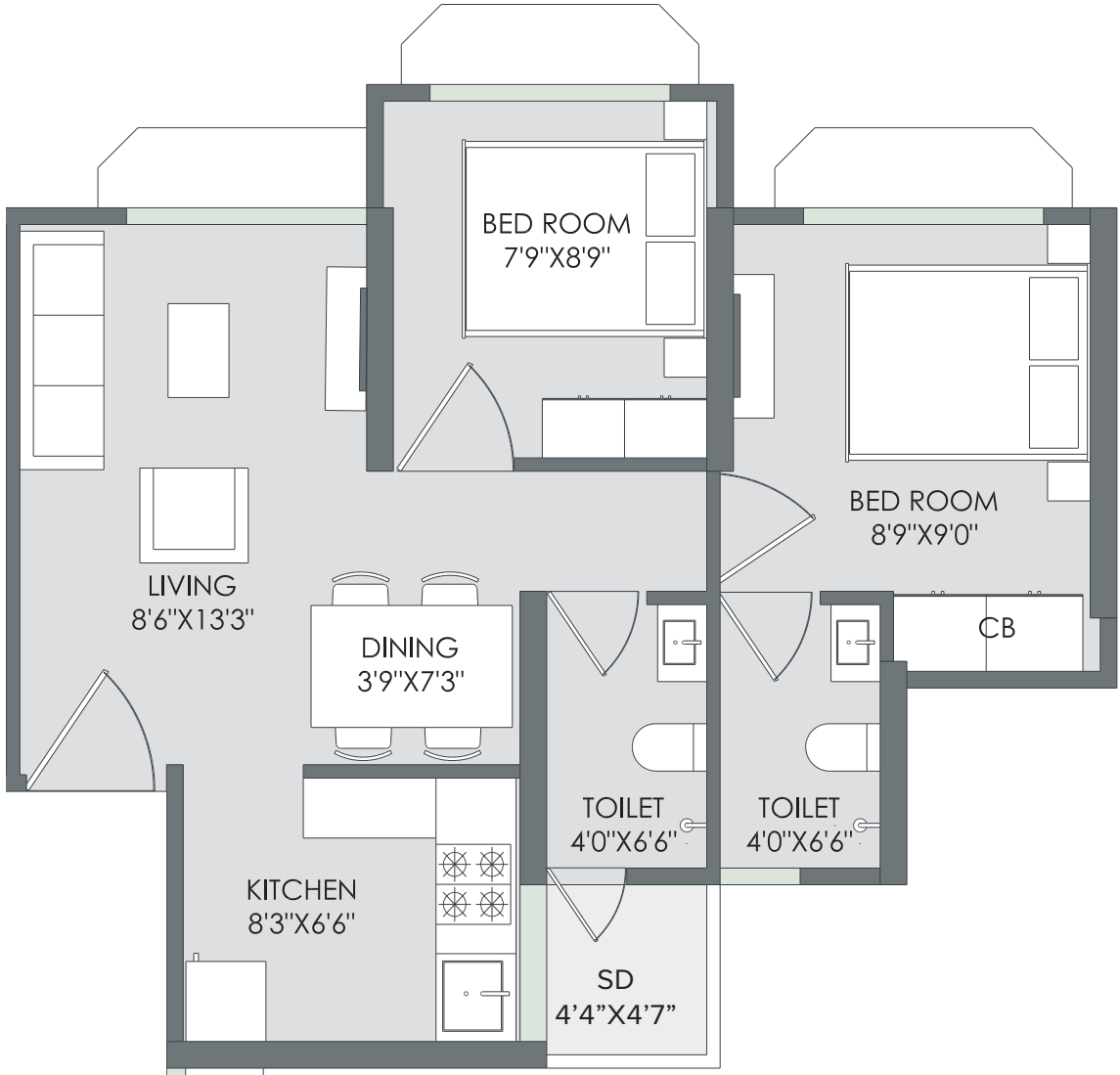
Disclaimer: The floor plans are as per the approved plans and specifications as of date. These plans may vary by +/- 3% and are subject to changes. The furniture, accessories, etc. shown in the plans does not form a part of the offering. Customers are requested to visit the site office and apprise themselves of all the necessary details prior to making any purchase decisions.

Disclaimer: The floor plans are as per the approved plans and specifications as of date. These plans may vary by +/- 3% and are subject to changes. The furniture, accessories, etc. shown in the plans does not form a part of the offering. Customers are requested to visit the site office and apprise themselves of all the necessary details prior to making any purchase decisions.

Unit Plan (Ruby)

2 BHK

RERA carpet area - 449 sqft

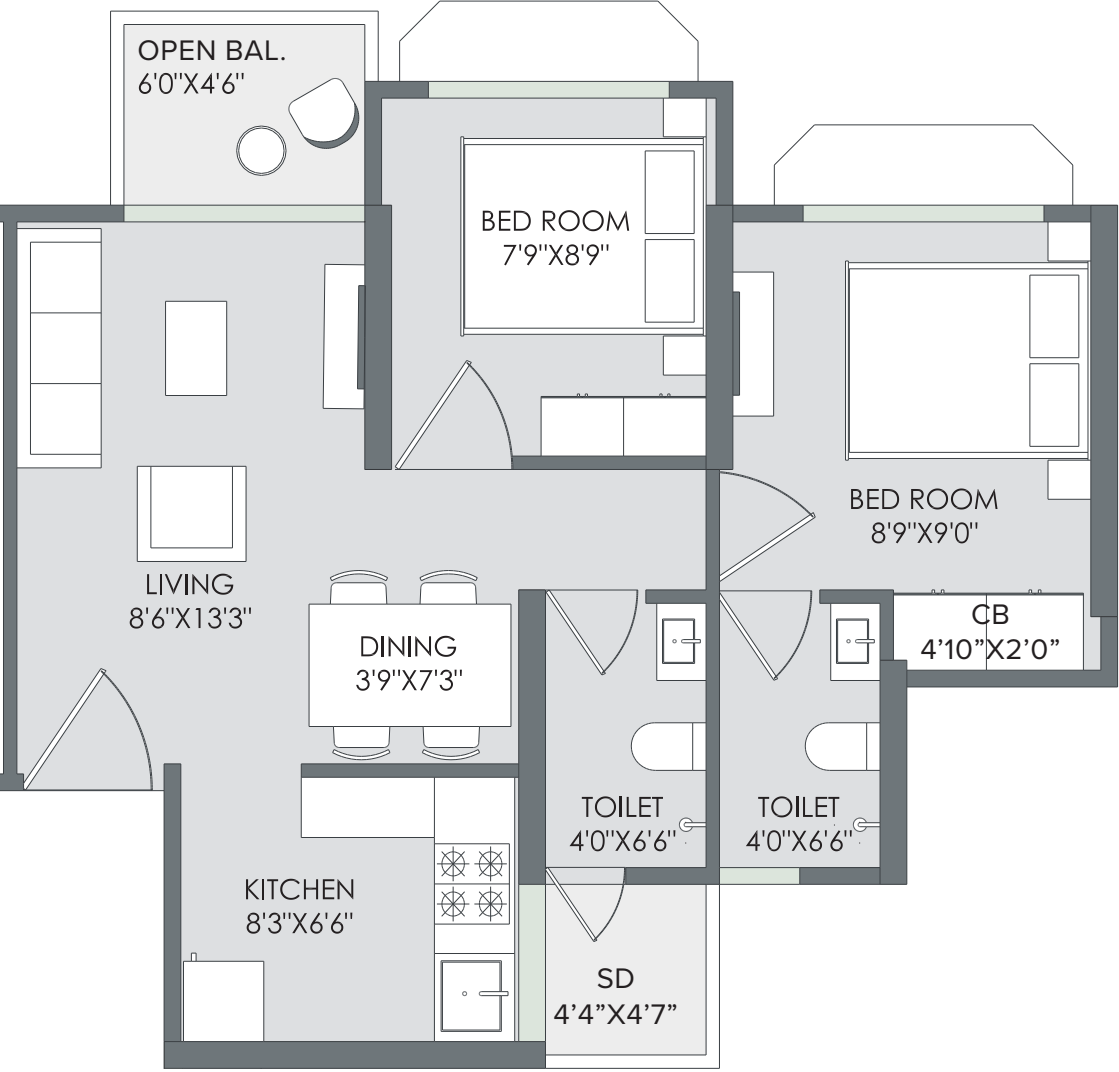


Disclaimer: The floor plans are as per the approved plans and specifications as of date. These plans may vary by +/- 3% and are subject to changes. The furniture, accessories, etc. shown in the plans does not form a part of the offering. Customers are requested to visit the site office and apprise themselves of all the necessary details prior to making any purchase decisions.

Unit Plan (Jasper & Ruby)

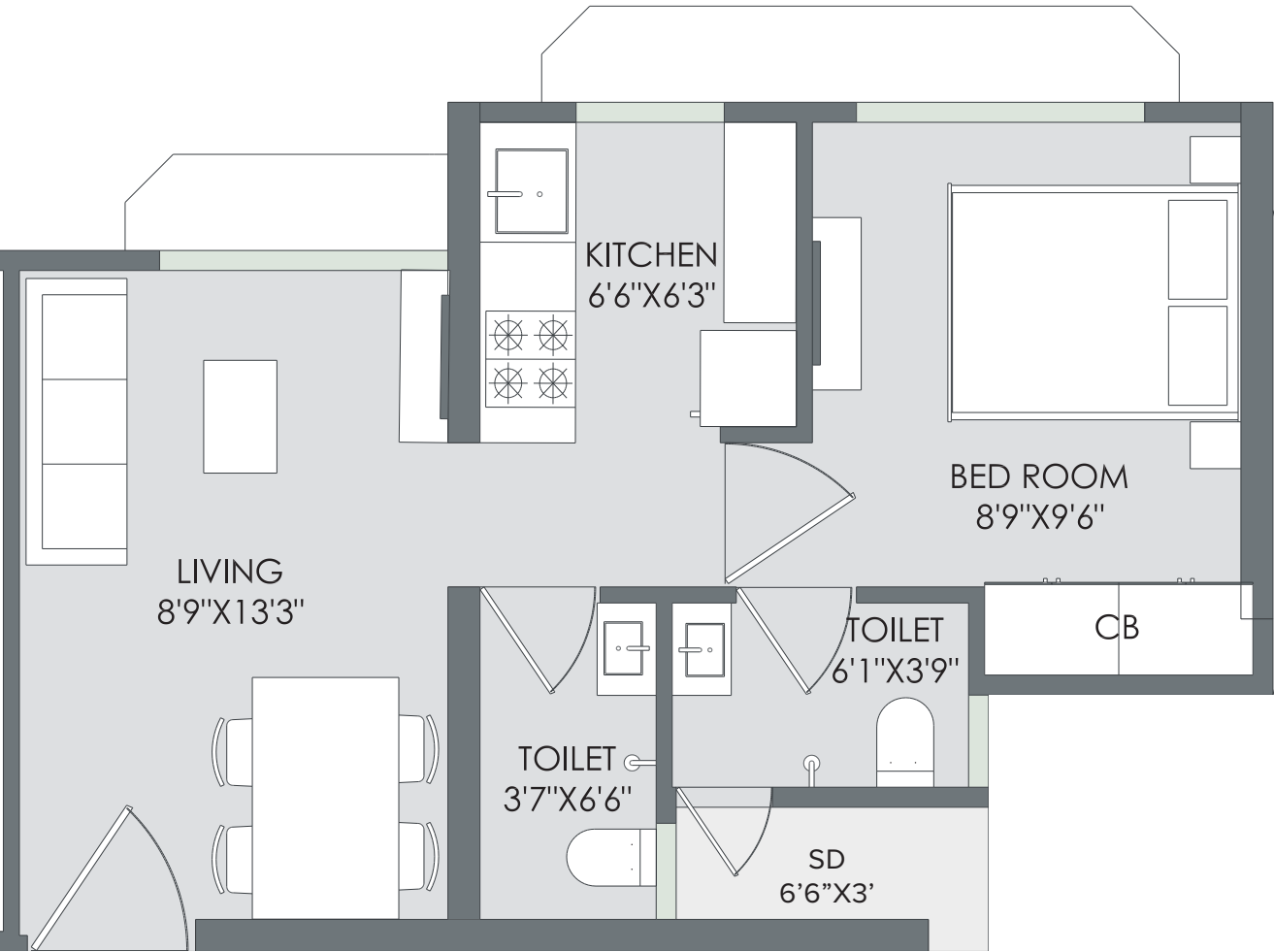
2 BHK + Deck

RERA carpet area - 476sqft



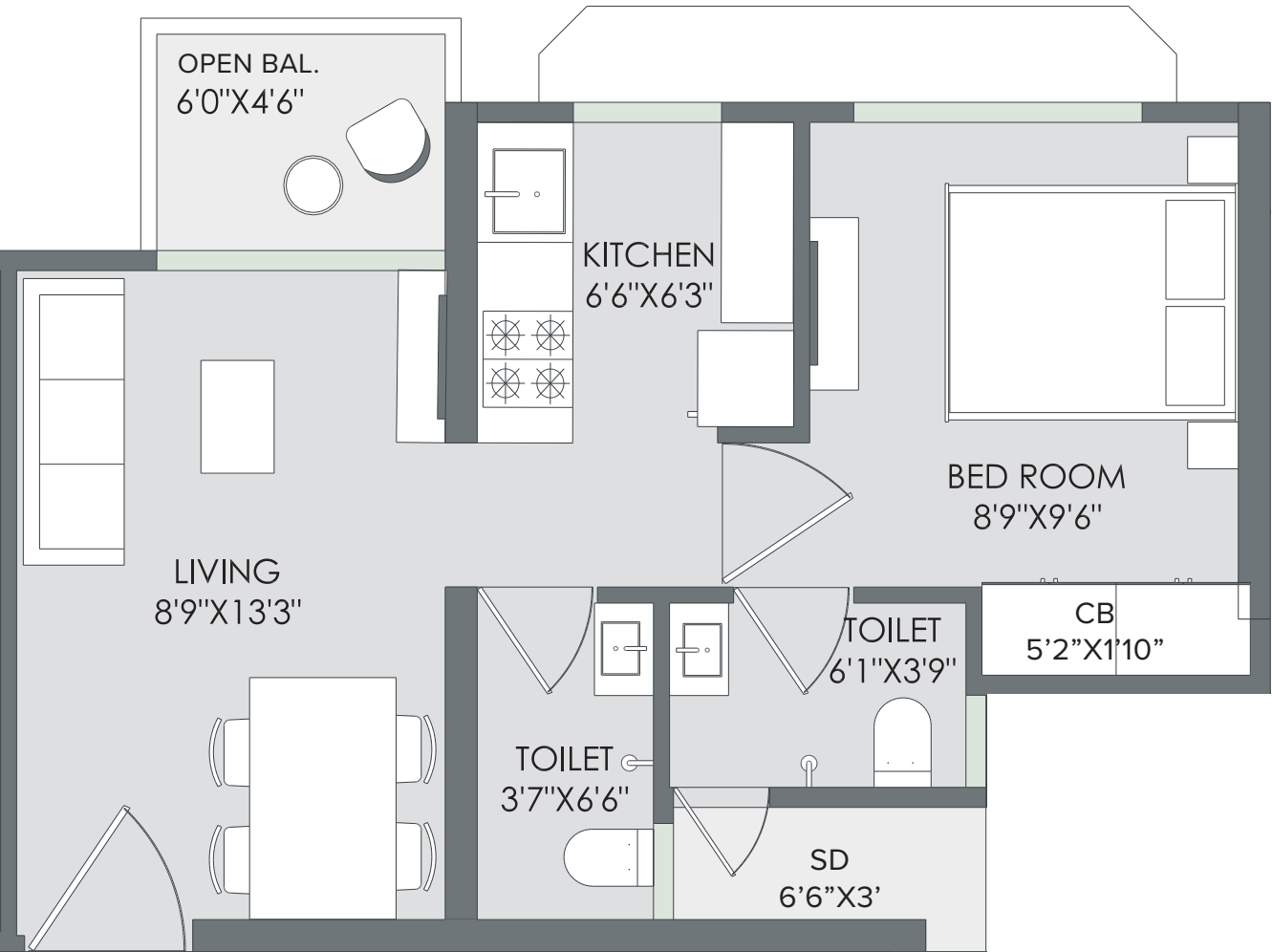
Disclaimer: The floor plans are as per the approved plans and specifications as of date. These plans may vary by +/- 3% and are subject to changes. The furniture, accessories, etc. shown in the plans does not form a part of the offering. Customers are requested to visit the site office and apprise themselves of all the necessary details prior to making any purchase decisions.

Unit Plan (Ruby)
1 BHK
RERA carpet area - 344 sqft



Disclaimer: The floor plans are as per the approved plans and specifications as of date. These plans may vary by +/- 3% and are subject to changes. The furniture, accessories, etc. shown in the plans does not form a part of the offering. Customers are requested to visit the site office and apprise themselves of all the necessary details prior to making any purchase decisions.

Unit Plan (Jasper & Ruby)
1 BHK + Deck
RERA carpet area - 372 sqft

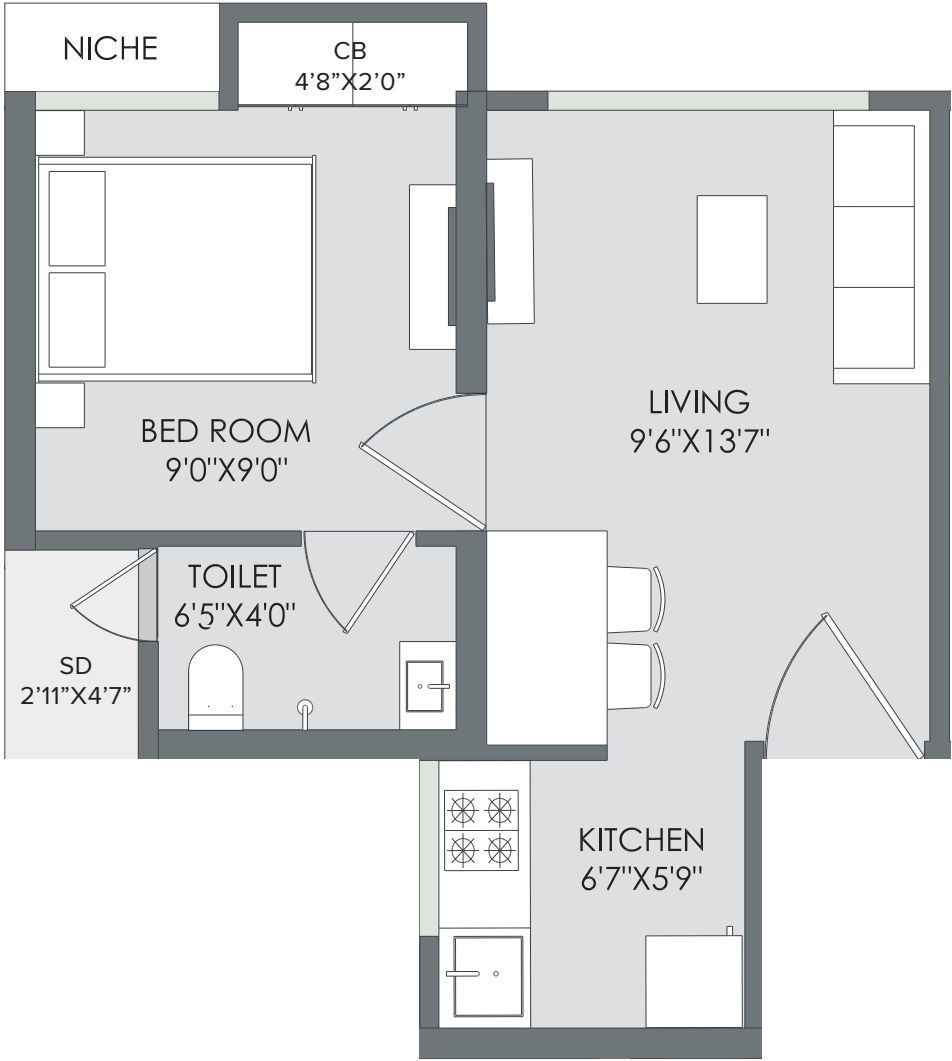


Disclaimer: The floor plans are as per the approved plans and specifications as of date. These plans may vary by +/- 3% and are subject to changes. The furniture, accessories, etc. shown in the plans does not form a part of the offering. Customers are requested to visit the site office and apprise themselves of all the necessary details prior to making any purchase decisions.

Unit Plan (Jasper & Ruby)

1 BHK

RERA carpet area - 300 sqft

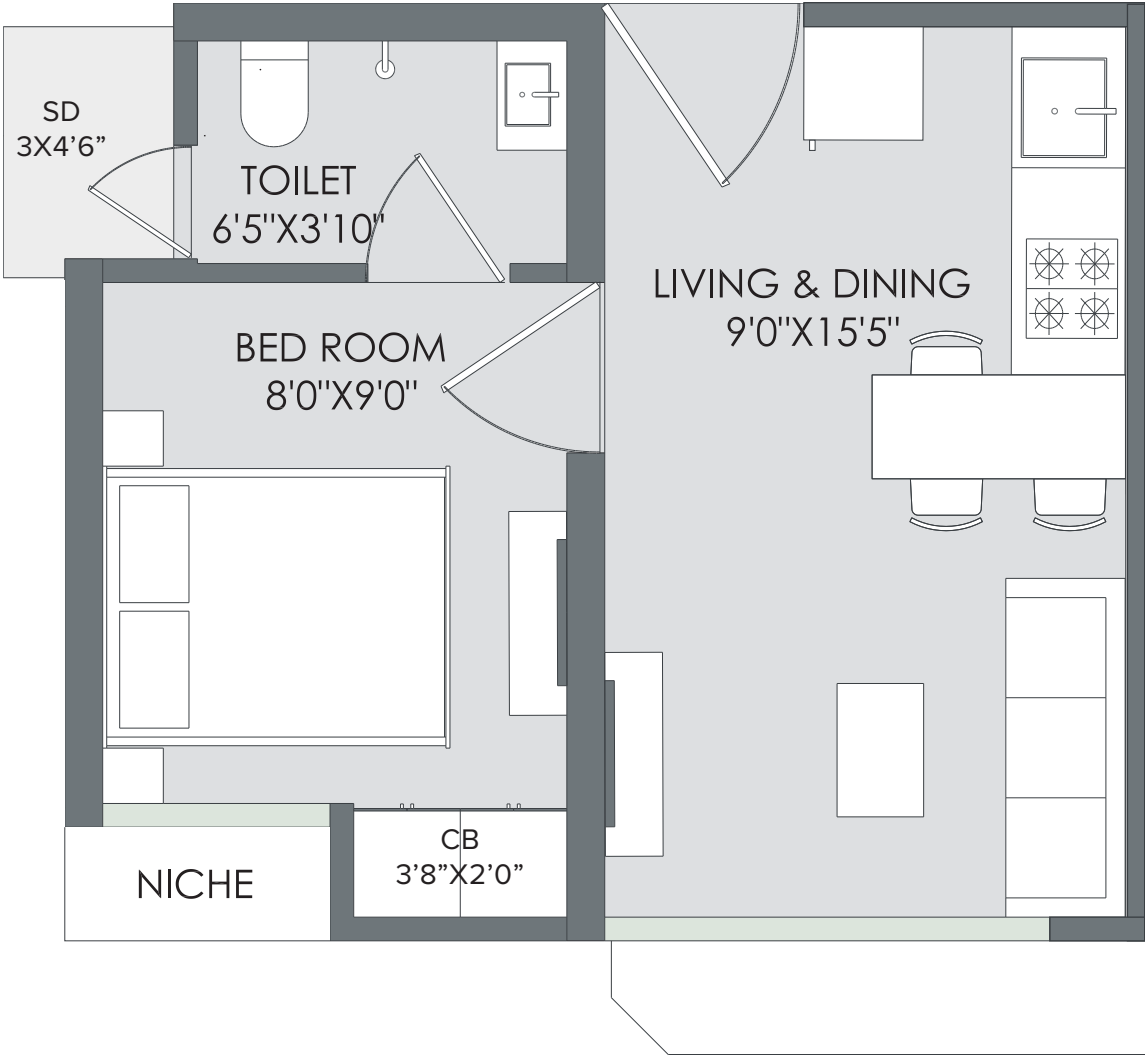


Disclaimer: The floor plans are as per the approved plans and specifications as of date. These plans may vary by +/- 3% and are subject to changes. The furniture, accessories, etc. shown in the plans does not form a part of the offering. Customers are requested to visit the site office and apprise themselves of all the necessary details prior to making any purchase decisions.

Unit Plan (Jasper & Ruby)

1 BHK

RERA carpet area - 258 sqft



Disclaimer: The floor plans are as per the approved plans and specifications as of date. These plans may vary by +/- 3% and are subject to changes. The furniture, accessories, etc. shown in the plans does not form a part of the offering. Customers are requested to visit the site office and apprise themselves of all the necessary details prior to making any purchase decisions.



The project has been registered via MahaRERA registration number: RERA NO.: P51700000686/0952/1265/P51700049449/P51700021189 and is available on the website <https://maharera.mahaonline.gov.in> under registered projects.