

PHASE 2

FLOOR PLANS


**THE
TOWNSHIP**

Spread across a vast expanse of lush green freehold land, Nextown provides one of the best integrated township living experiences in all of Kalyn-Shil.

*The Layout Plan is for representational purposes only & are not according to scale

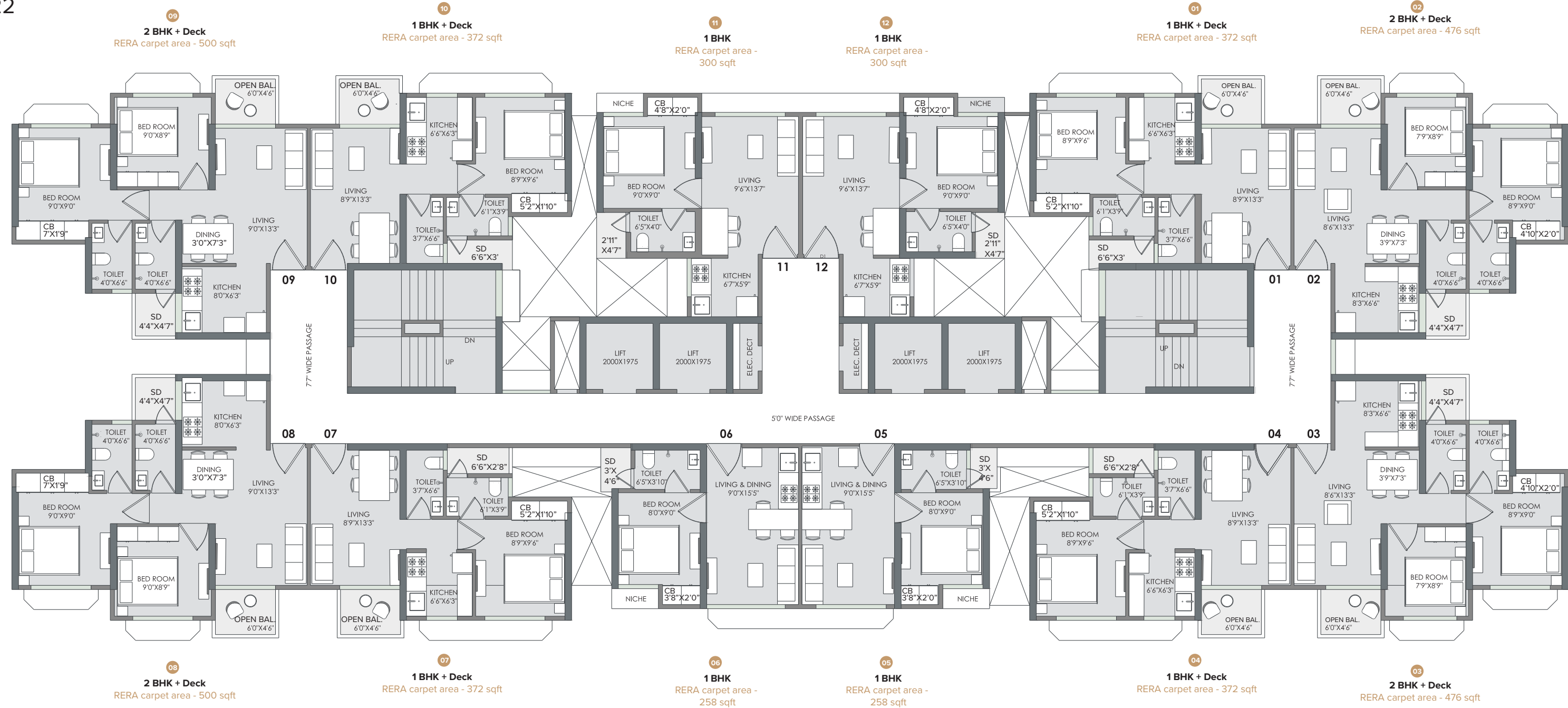
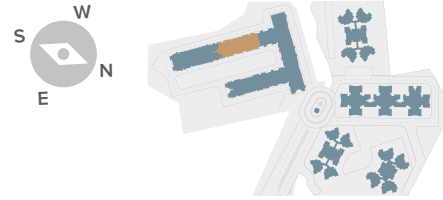


- █ Phase 1
- █ Phase 2

JASPER

Typical Floor Plan

Floors 2 to 22



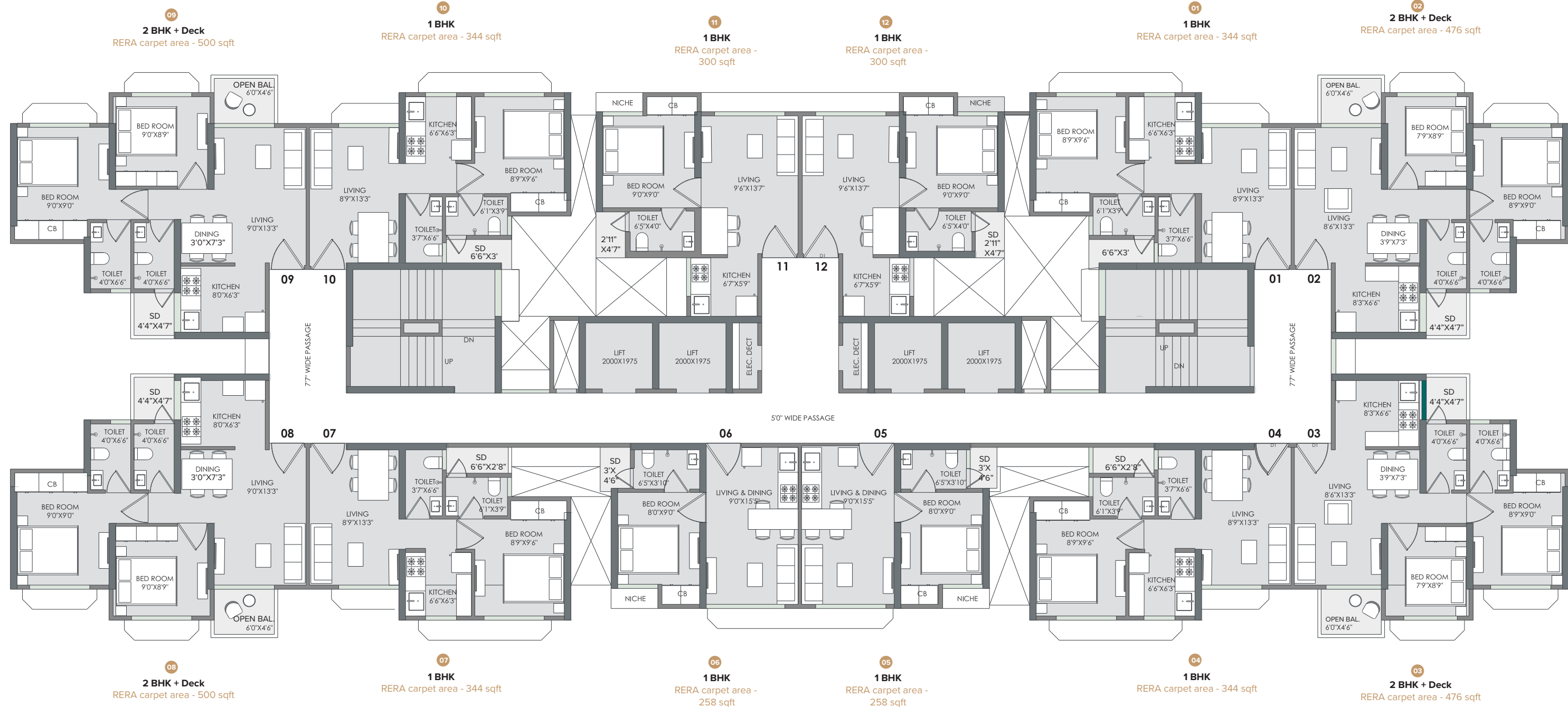
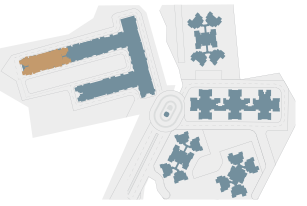
Unit No. 811, 1311, 1811 are refuge areas

Disclaimer: The floor plans are as per the approved plans and specifications as of date. These plans may vary by +/- 3% and are subject to changes. The furniture, accessories, etc. shown in the plans does not form a part of the offering. Customers are requested to visit the site office and apprise themselves of all the necessary details prior to making any purchase decisions.

RUBY

Typical Floor Plan

Floors 1, 3, 5, 7, 9, 11, 15, 17 & 19

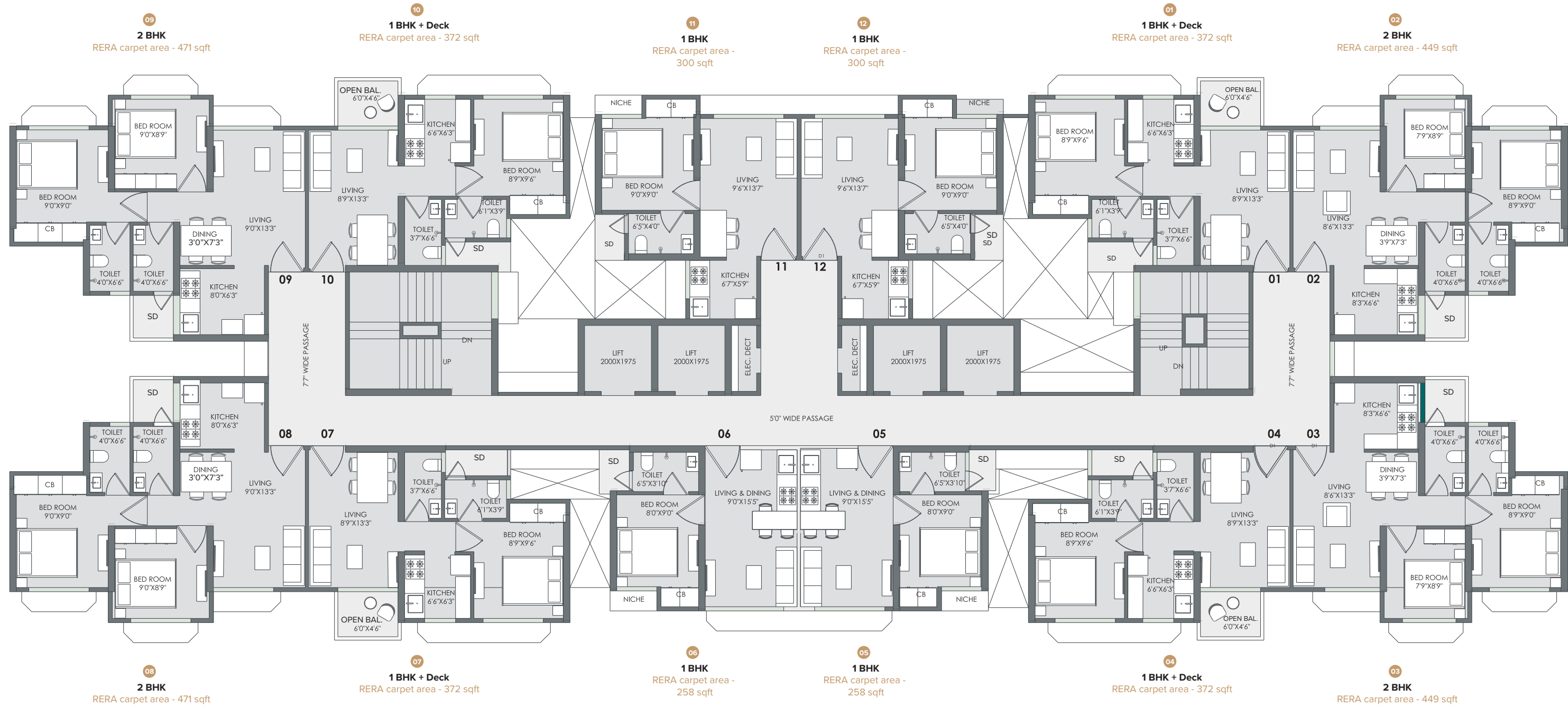
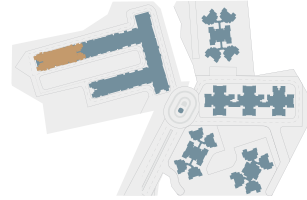


Disclaimer: The floor plans are as per the approved plans and specifications as of date. These plans may vary by +/- 3% and are subject to changes. The furniture, accessories, etc. shown in the plans does not form a part of the offering. Customers are requested to visit the site office and apprise themselves of all the necessary details prior to making any purchase decisions.

RUBY

Typical Floor Plan

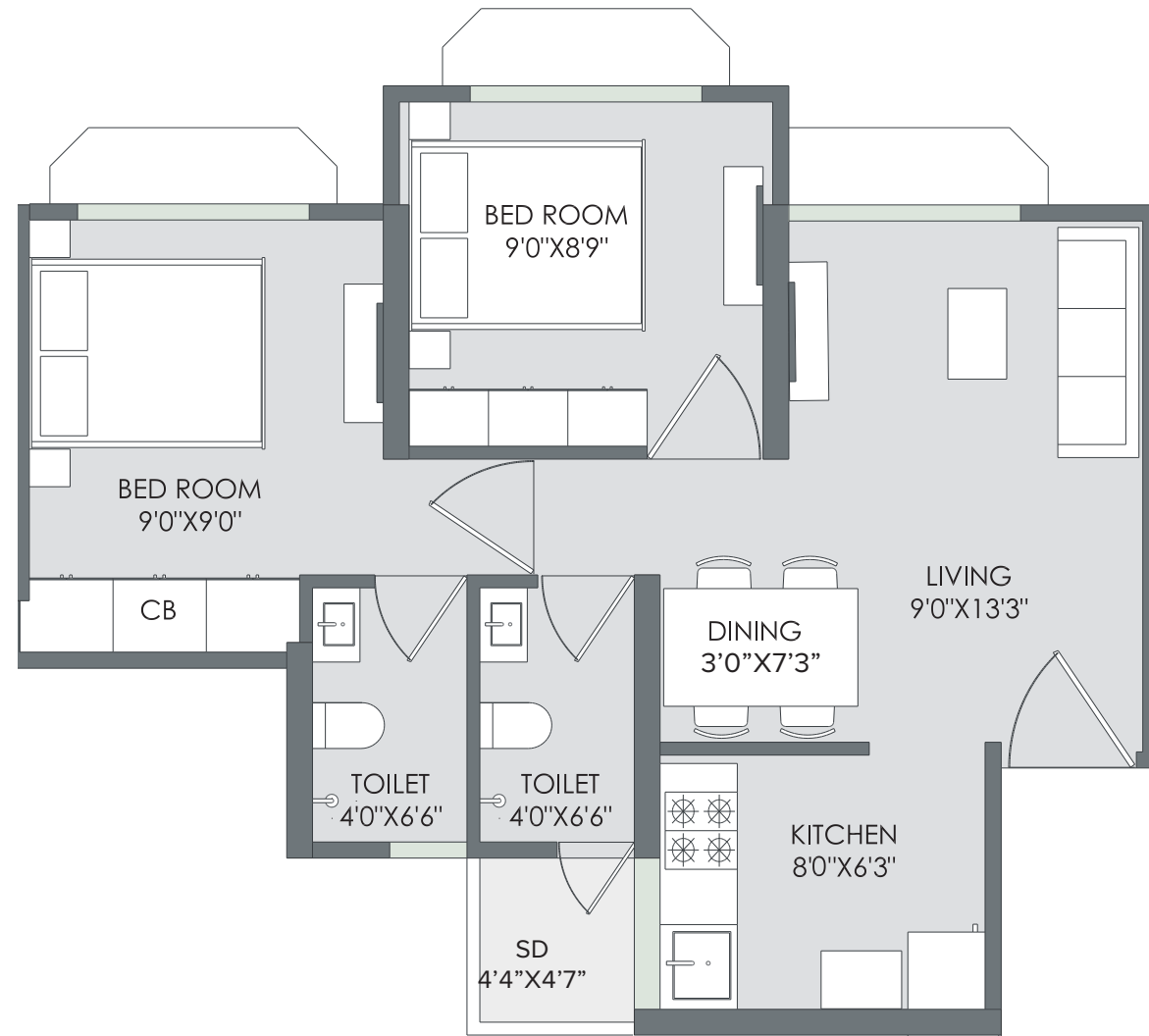
Floors 2, 4, 6, 10, 12, 14, 16, 20 & 22



Unit Plan (Ruby)

2 BHK

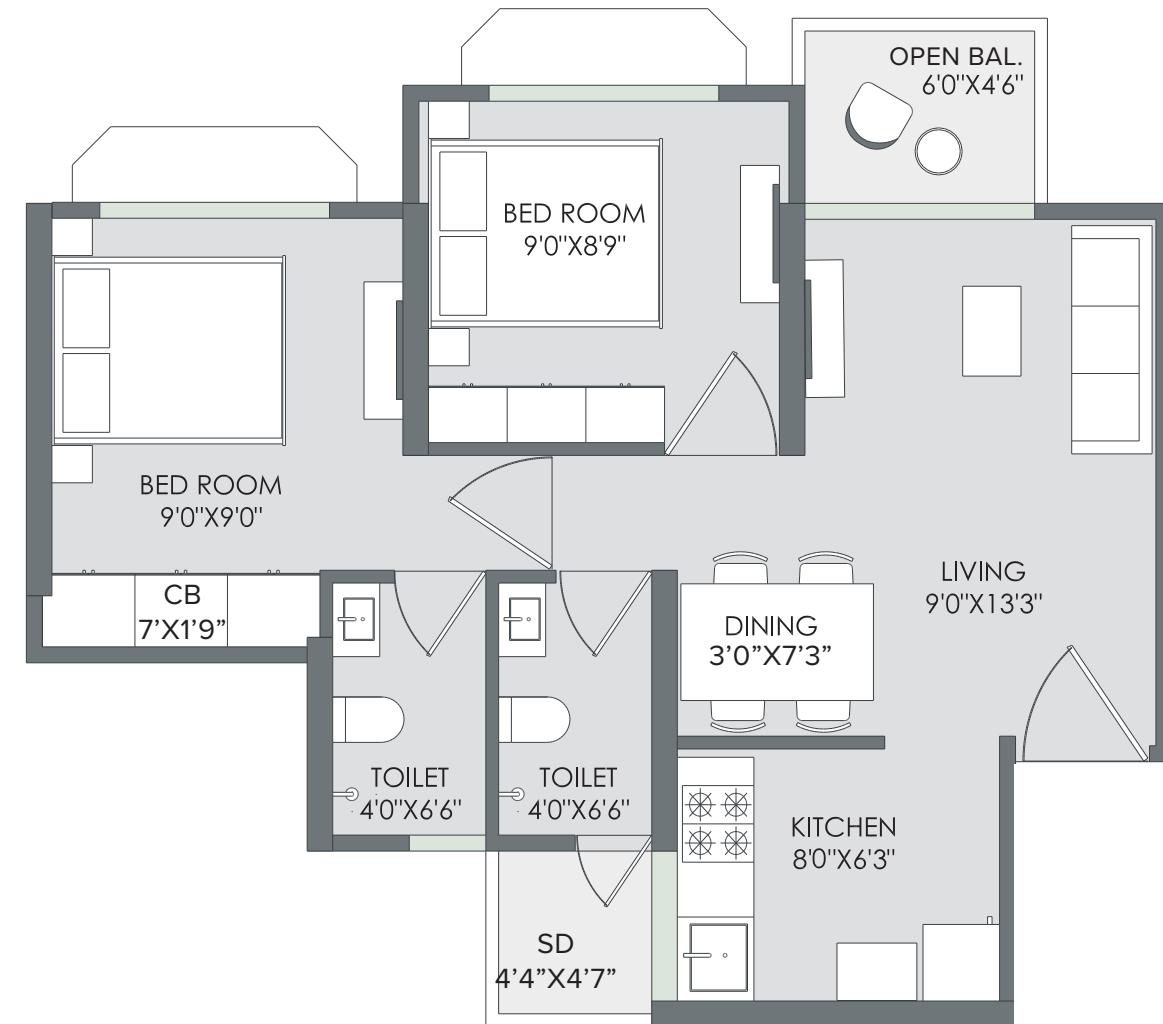
RERA carpet area - 471 sqft



Unit Plan (Jasper & Ruby)

2 BHK+ Deck

RERA carpet area - 500 sqft



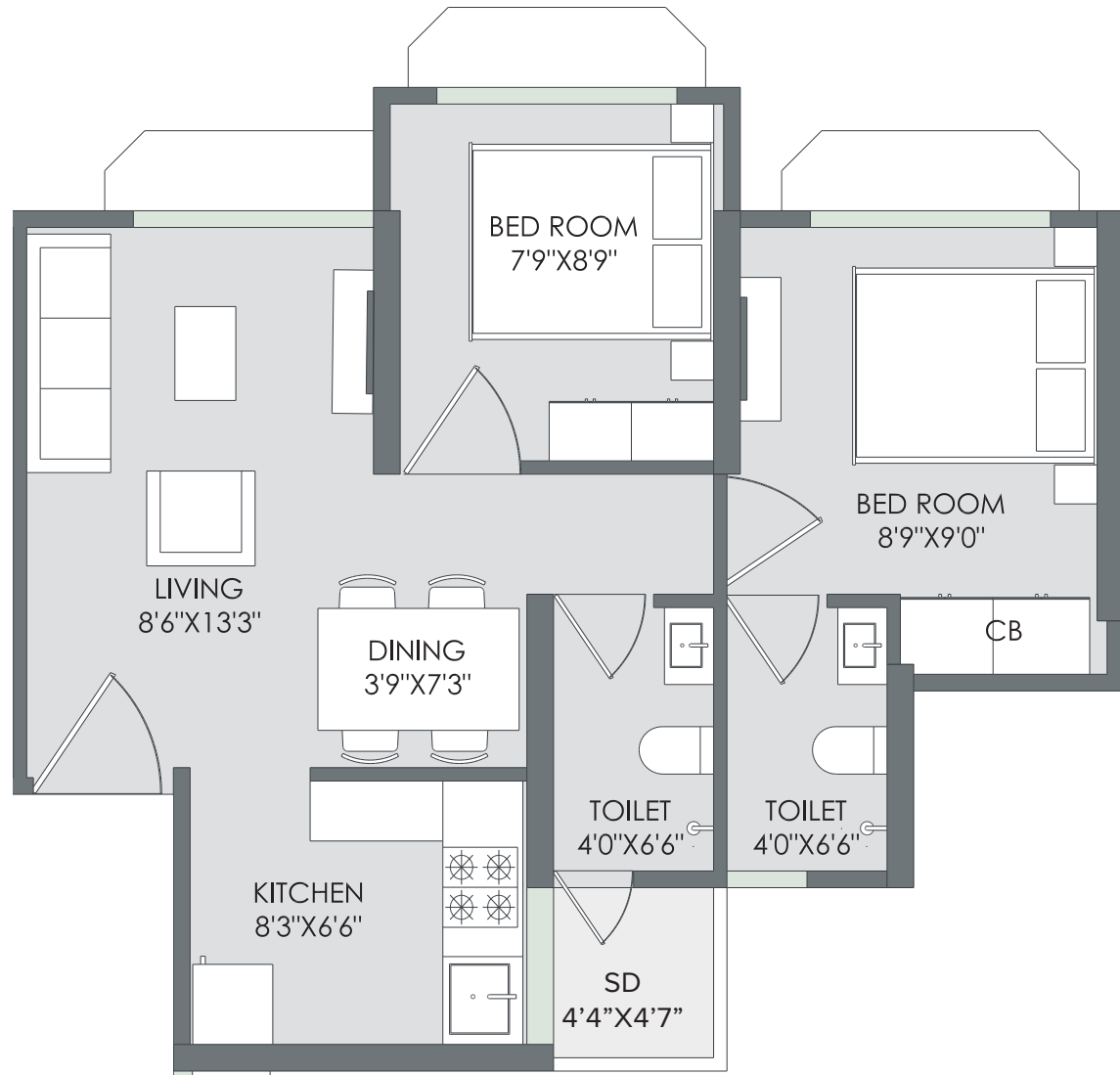
Disclaimer: The floor plans are as per the approved plans and specifications as of date. These plans may vary by +/- 3% and are subject to changes. The furniture, accessories, etc. shown in the plans does not form a part of the offering. Customers are requested to visit the site office and apprise themselves of all the necessary details prior to making any purchase decisions.

Disclaimer: The floor plans are as per the approved plans and specifications as of date. These plans may vary by +/- 3% and are subject to changes. The furniture, accessories, etc. shown in the plans does not form a part of the offering. Customers are requested to visit the site office and apprise themselves of all the necessary details prior to making any purchase decisions.

Unit Plan (Ruby)

2 BHK

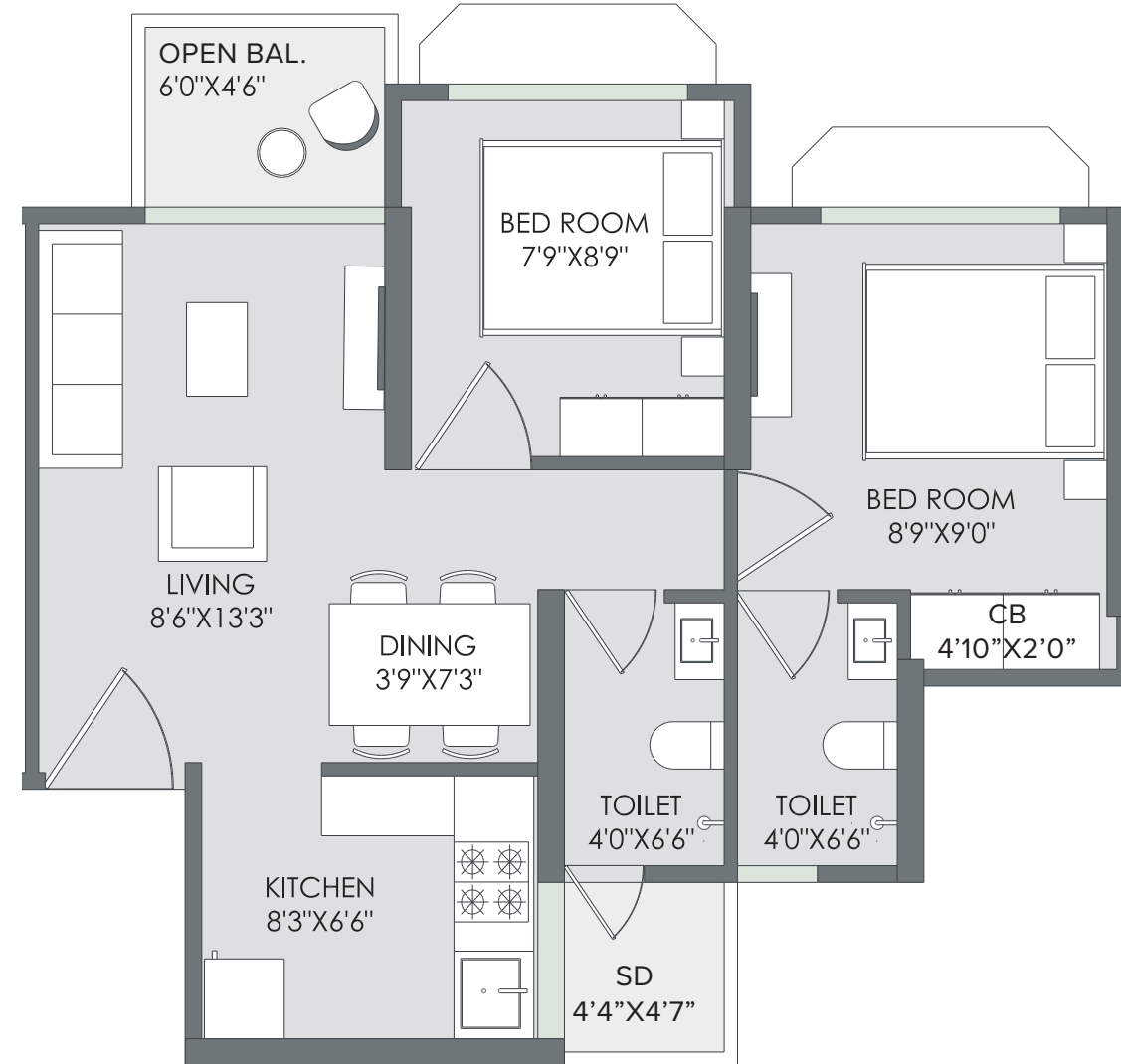
RERA carpet area - 449 sqft



Unit Plan (Jasper & Ruby)

2 BHK + Deck

RERA carpet area - 476sqft



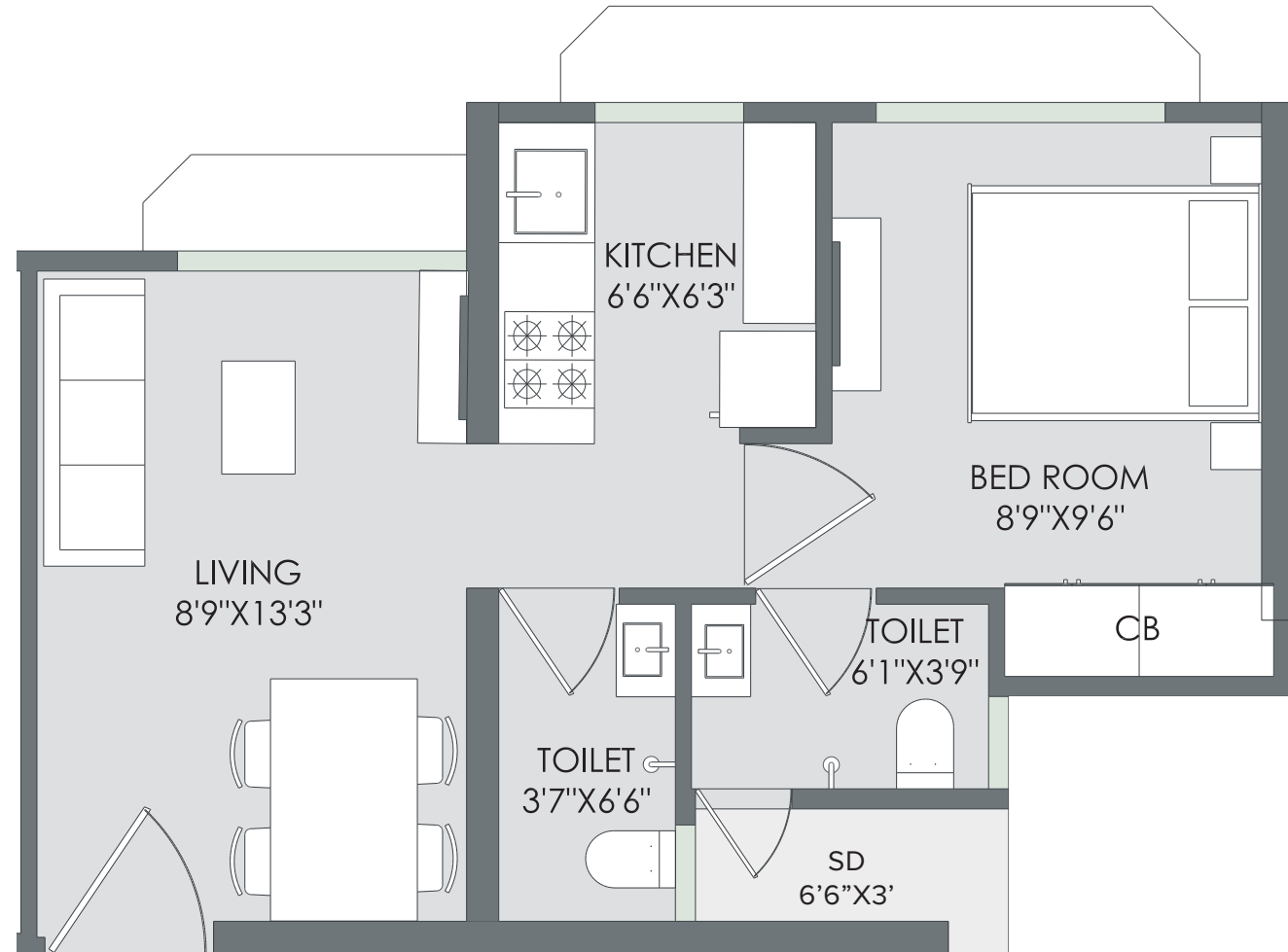
Disclaimer: The floor plans are as per the approved plans and specifications as of date. These plans may vary by +/- 3% and are subject to changes. The furniture, accessories, etc. shown in the plans does not form a part of the offering. Customers are requested to visit the site office and apprise themselves of all the necessary details prior to making any purchase decisions.

Disclaimer: The floor plans are as per the approved plans and specifications as of date. These plans may vary by +/- 3% and are subject to changes. The furniture, accessories, etc. shown in the plans does not form a part of the offering. Customers are requested to visit the site office and apprise themselves of all the necessary details prior to making any purchase decisions.

Unit Plan (Ruby)

1 BHK

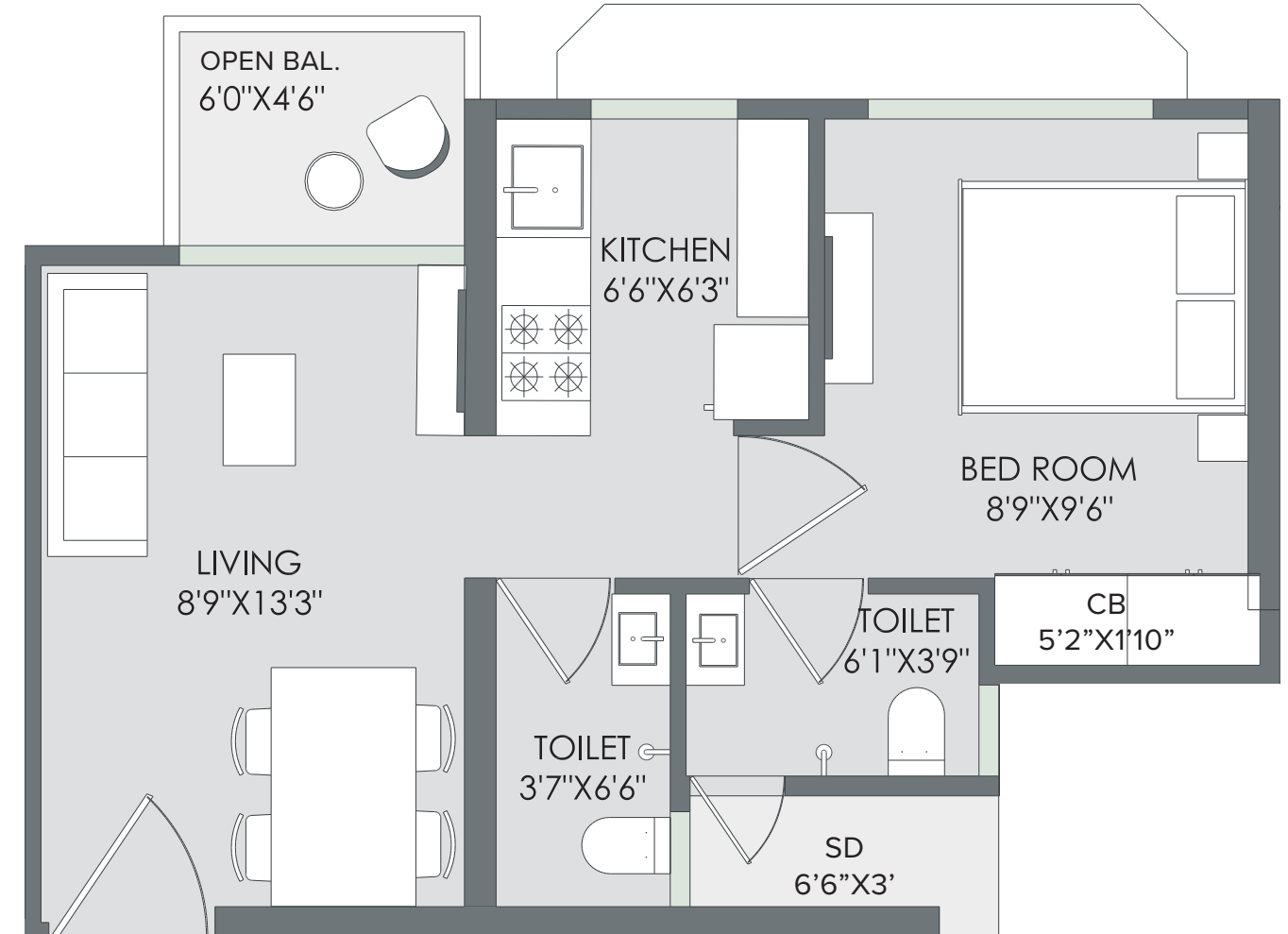
RERA carpet area - 344 sqft



Unit Plan (Jasper & Ruby)

1 BHK + Deck

RERA carpet area - 372 sqft



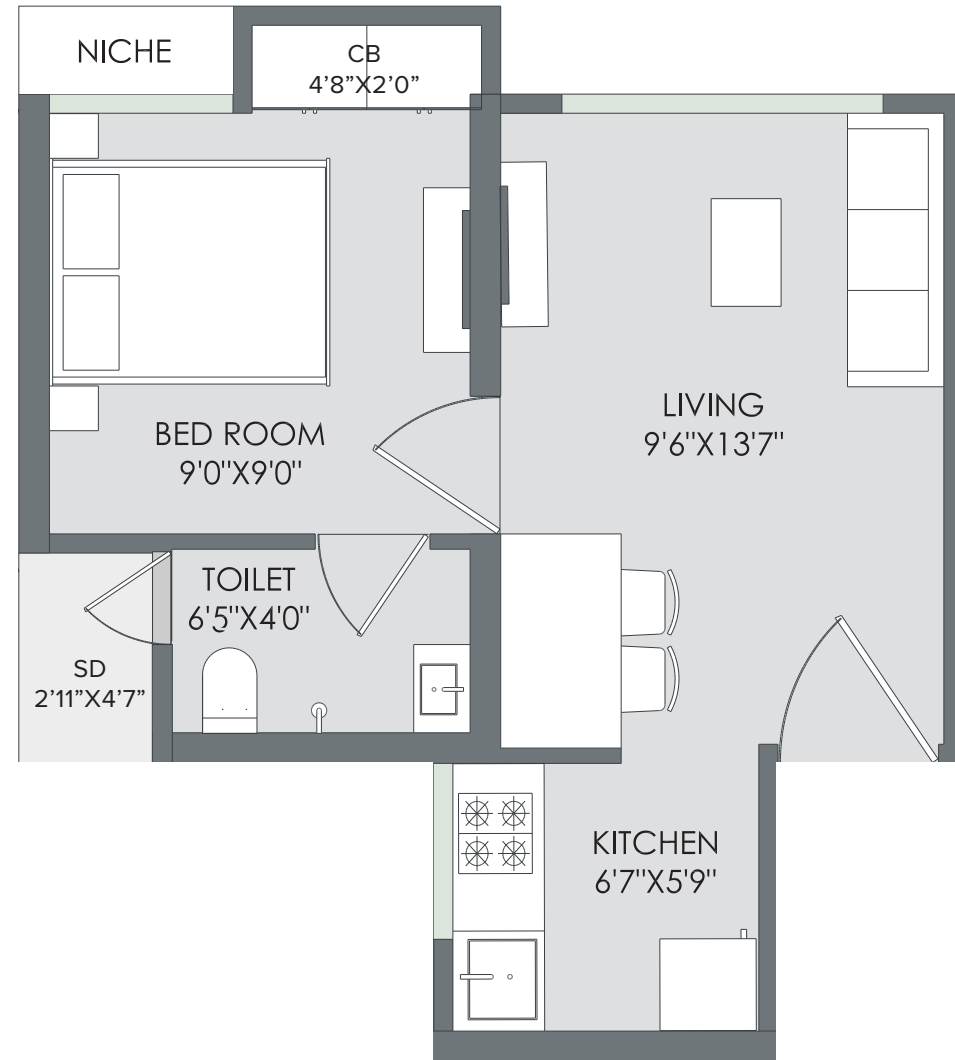
Disclaimer: The floor plans are as per the approved plans and specifications as of date. These plans may vary by +/- 3% and are subject to changes. The furniture, accessories, etc. shown in the plans does not form a part of the offering. Customers are requested to visit the site office and apprise themselves of all the necessary details prior to making any purchase decisions.

Disclaimer: The floor plans are as per the approved plans and specifications as of date. These plans may vary by +/- 3% and are subject to changes. The furniture, accessories, etc. shown in the plans does not form a part of the offering. Customers are requested to visit the site office and apprise themselves of all the necessary details prior to making any purchase decisions.

Unit Plan (Jasper & Ruby)

1 BHK

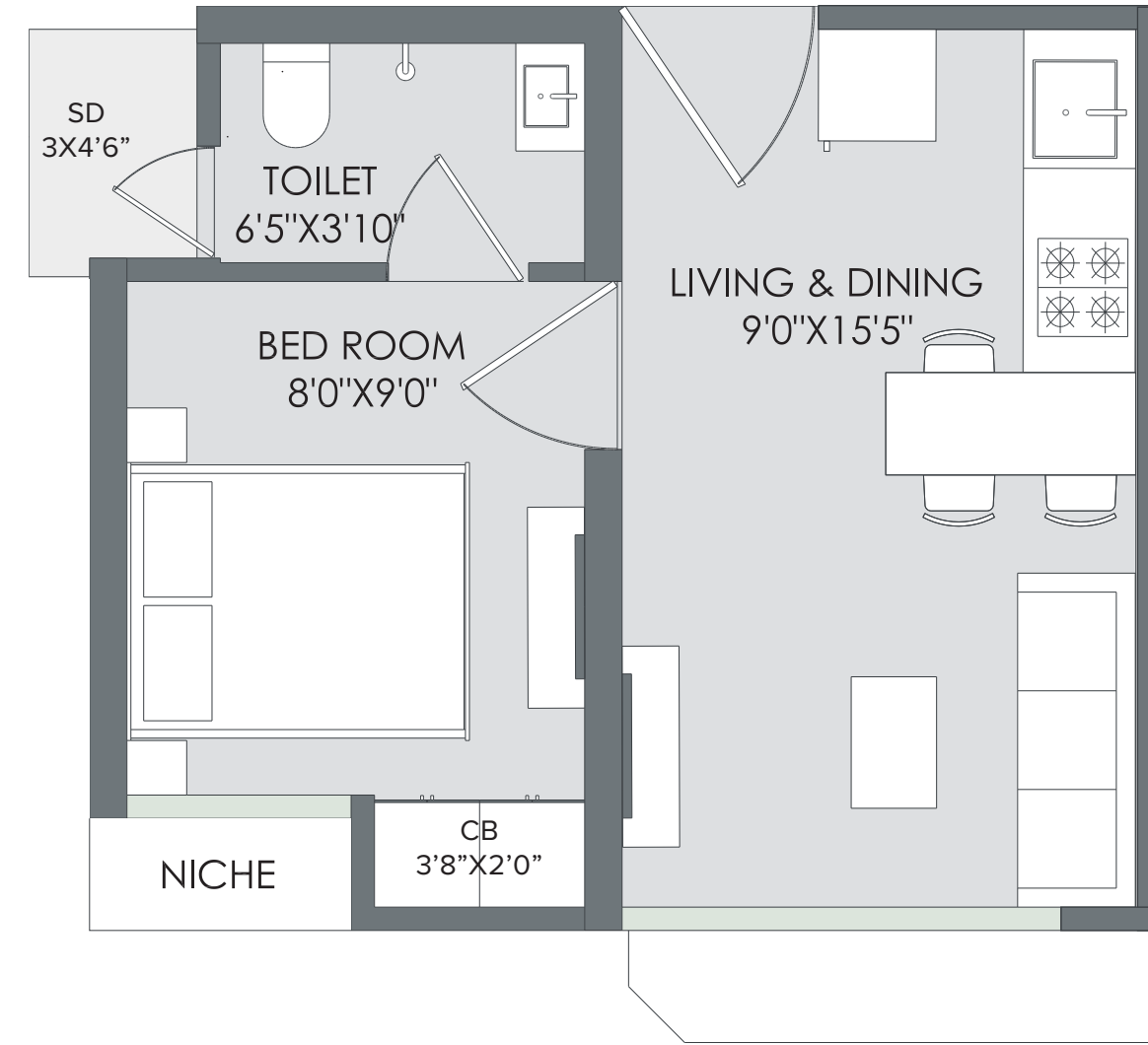
RERA carpet area - 300 sqft



Unit Plan (Jasper & Ruby)

1 BHK

RERA carpet area - 258 sqft



Disclaimer: The floor plans are as per the approved plans and specifications as of date. These plans may vary by +/- 3% and are subject to changes. The furniture, accessories, etc. shown in the plans does not form a part of the offering. Customers are requested to visit the site office and apprise themselves of all the necessary details prior to making any purchase decisions.

Disclaimer: The floor plans are as per the approved plans and specifications as of date. These plans may vary by +/- 3% and are subject to changes. The furniture, accessories, etc. shown in the plans does not form a part of the offering. Customers are requested to visit the site office and apprise themselves of all the necessary details prior to making any purchase decisions.



MARATHON



The project has been registered via MahaRERA registration number: RERA NO.: P51700000686/0952/1265/P51700049449/P51700021189 and is available on the website <https://maharera.mahaonline.gov.in> under registered projects.