



# *Service* PLAN

*We* want the transition to your new home to be as smooth as possible. This section gives a detailed layout of the apartment and highlights the electrical and plumbing lines. It will help your contractor to understand the internal wirings so that any changes you make can be easy and hassle free.

# SERVICES LAYOUT

Flat no. 1 & 2

- Structural Wall
- CB
- RCC column
- Phone
- Distribution board
- LAN
- Window
- TV
- Intercom
- Non structural wall



# SERVICES LAYOUT

Flat no. 3 & 8

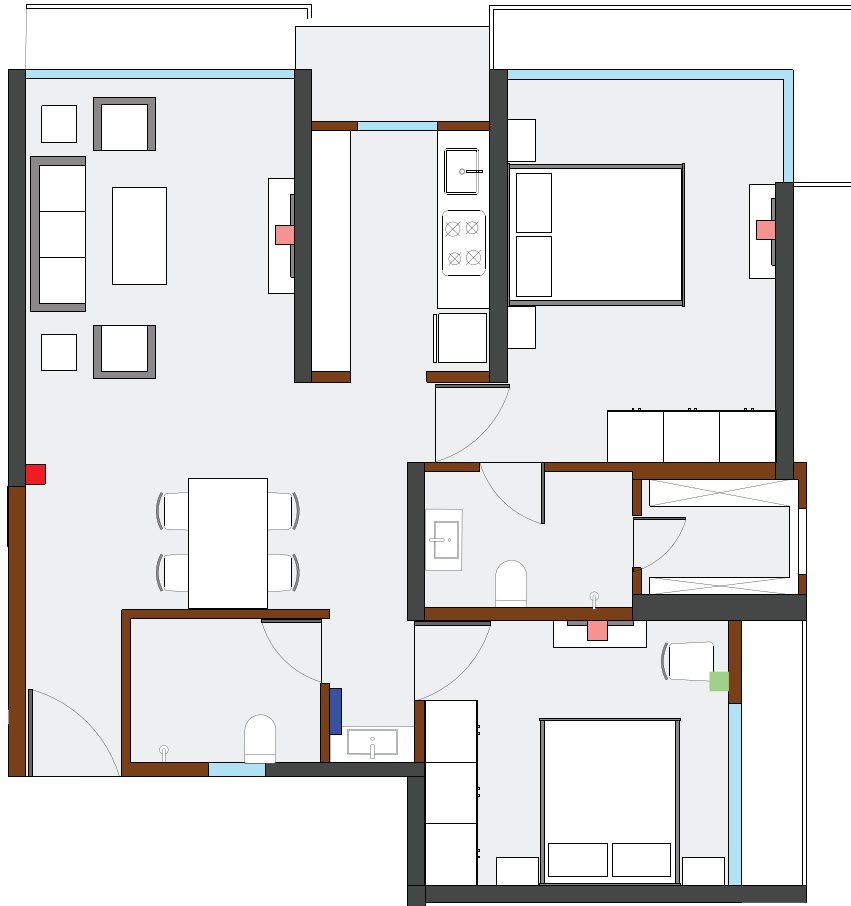
- Structural Wall
- CB
- RCC column
- Phone
- Distribution board
- LAN
- Window
- TV
- Intercom
- Non structural wall



# SERVICES LAYOUT

Flat no. 4 & 7

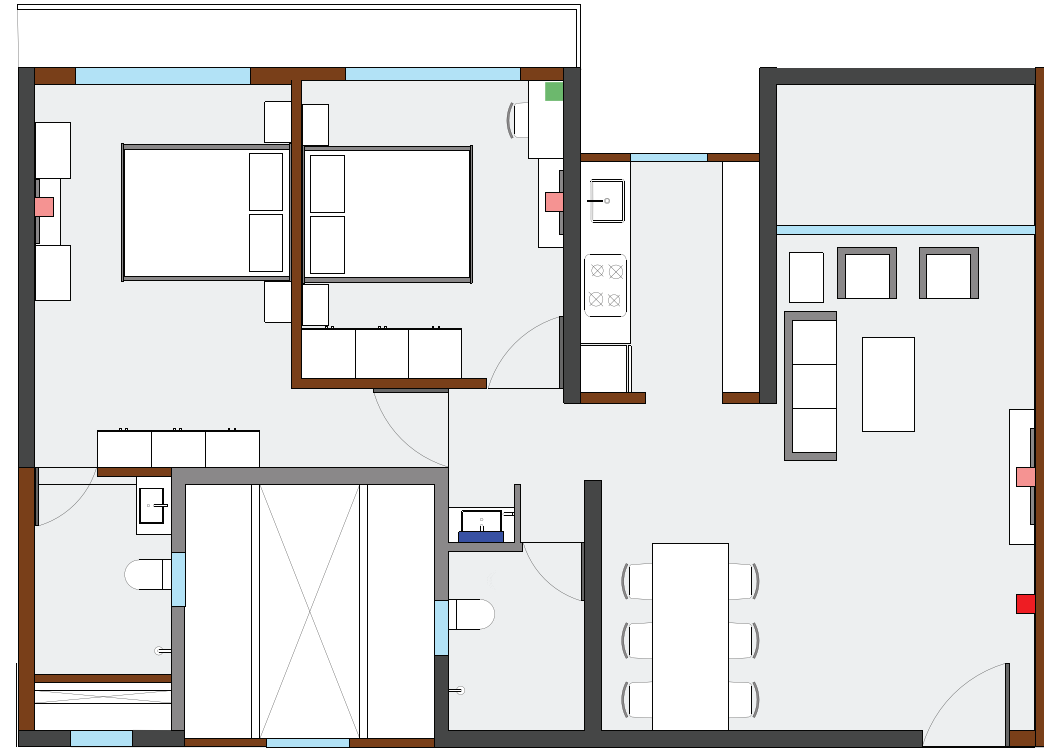
- |                    |                     |
|--------------------|---------------------|
| Structural Wall    | LAN                 |
| CB                 | Window              |
| RCC column         | TV                  |
| Phone              | Intercom            |
| Distribution board | Non structural wall |



# SERVICES LAYOUT

Flat no. 5 & 6

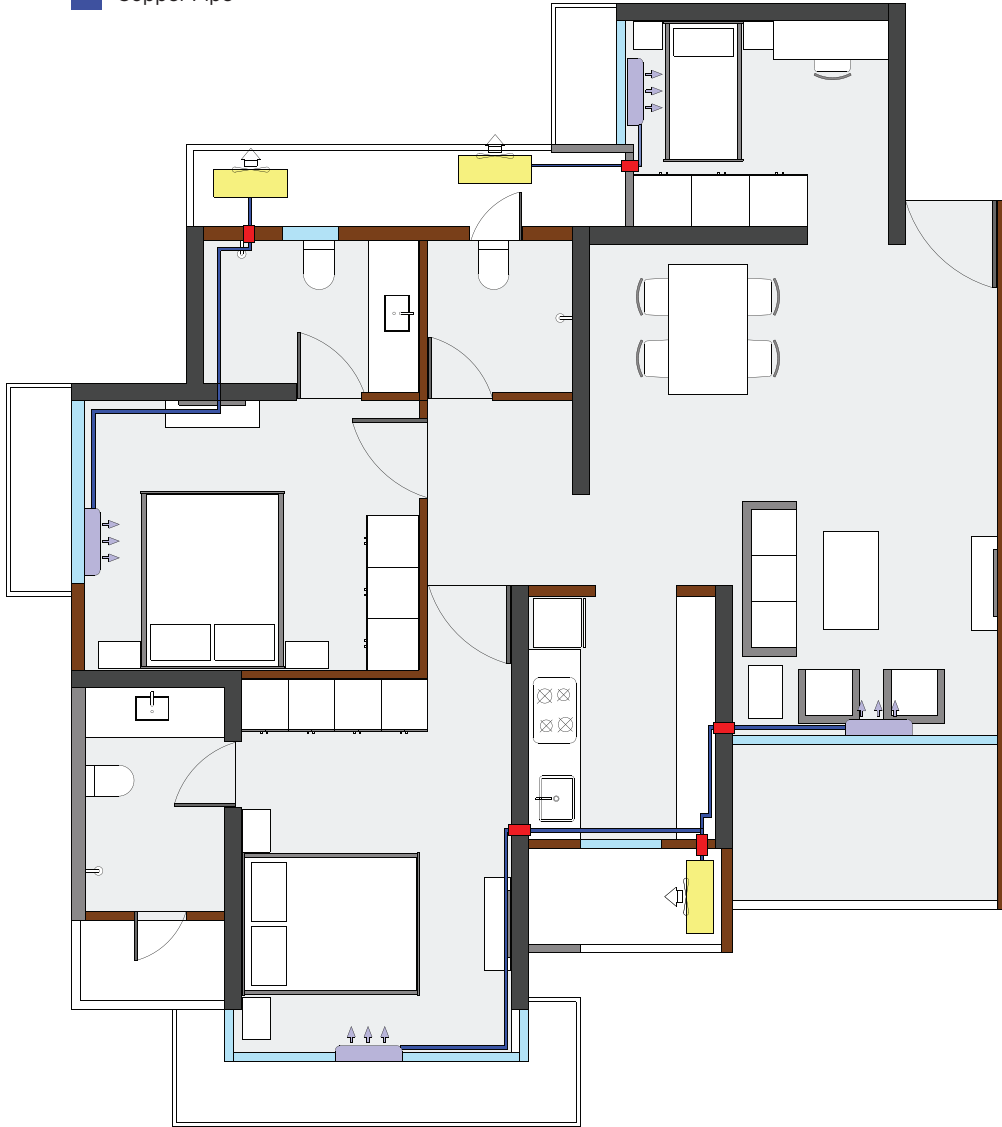
- |                    |                     |
|--------------------|---------------------|
| Structural Wall    | LAN                 |
| CB                 | Window              |
| RCC column         | TV                  |
| Phone              | Intercom            |
| Distribution board | Non structural wall |



- AC
- Outdoor unit
- Sleeve
- Copper Pipe

## AC WIRING LAYOUT

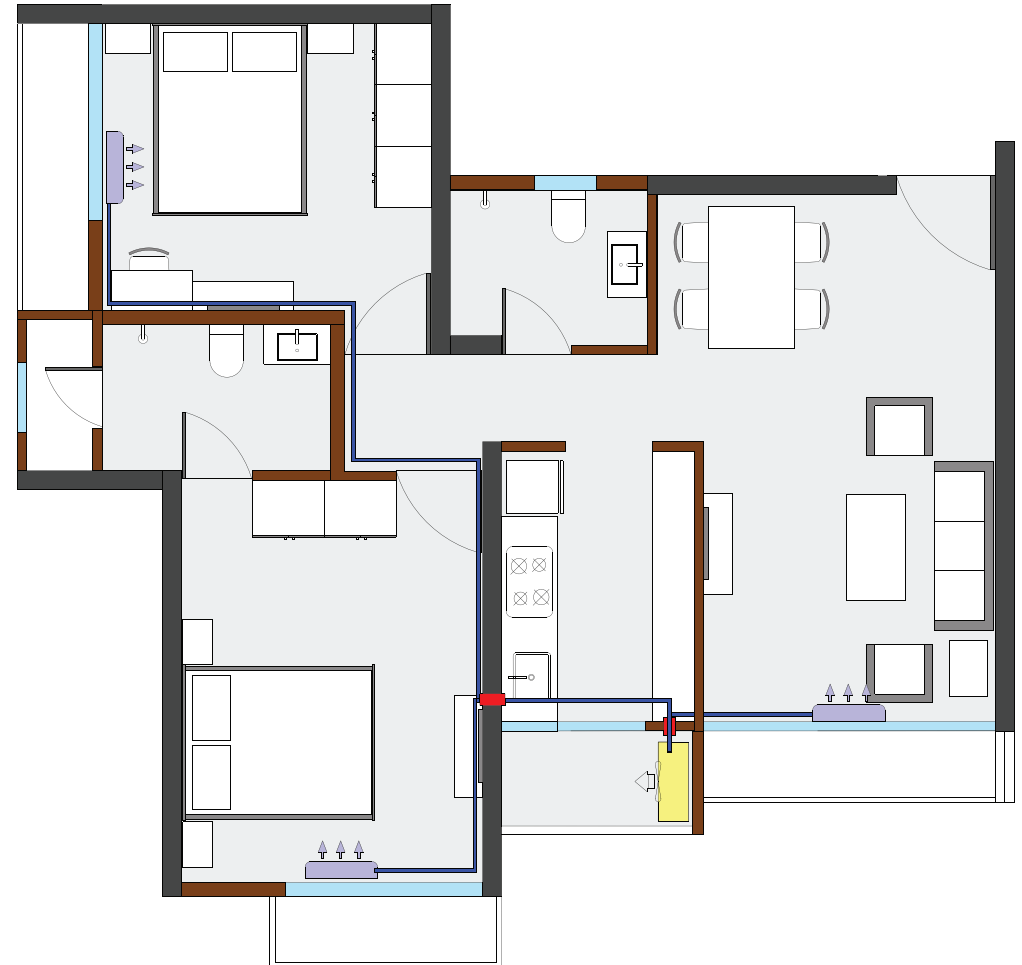
Flat no. 1 & 2



- AC
- Outdoor unit
- Sleeve
- Copper Pipe

## AC WIRING LAYOUT

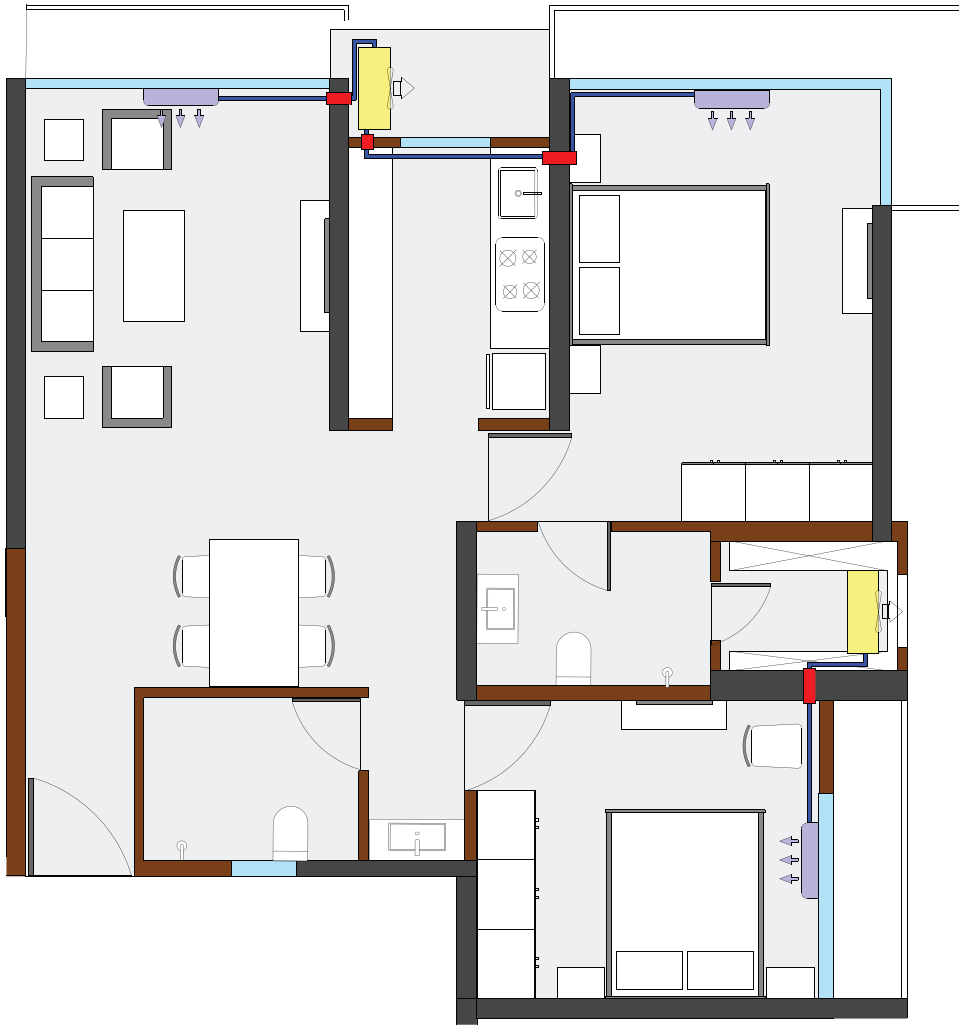
Flat no. 3 & 8



- AC
- Outdoor unit
- Sleeve
- Copper Pipe

## AC WIRING LAYOUT

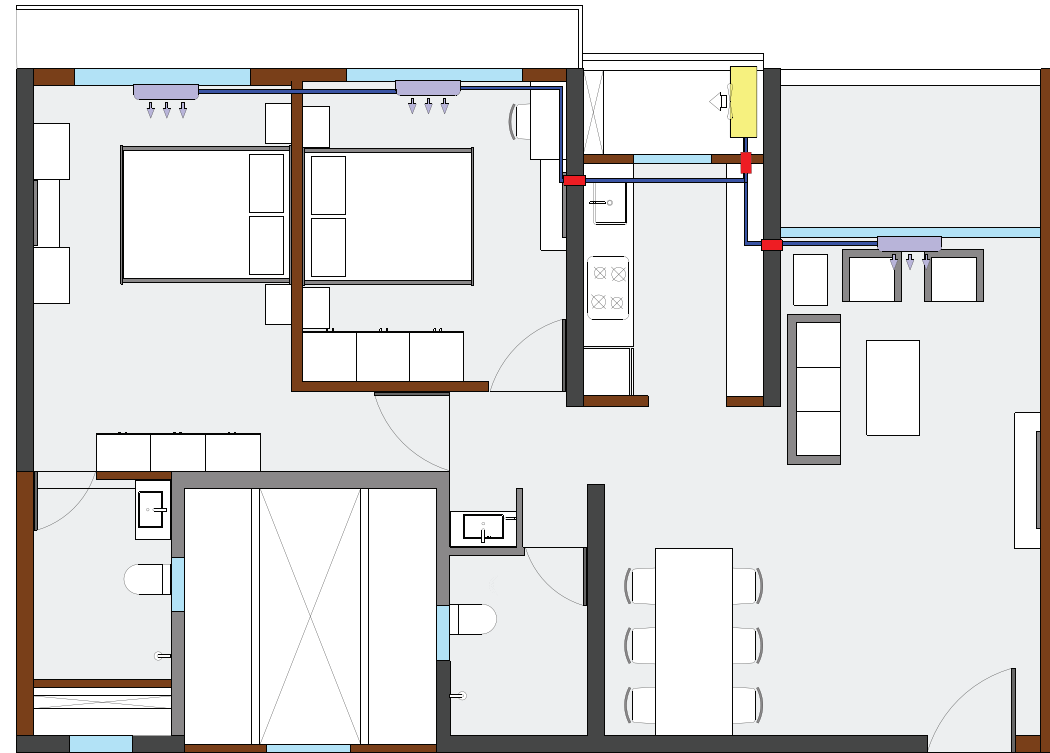
Flat no. 4 & 7



- AC
- Outdoor unit
- Sleeve
- Copper Pipe

## AC WIRING LAYOUT

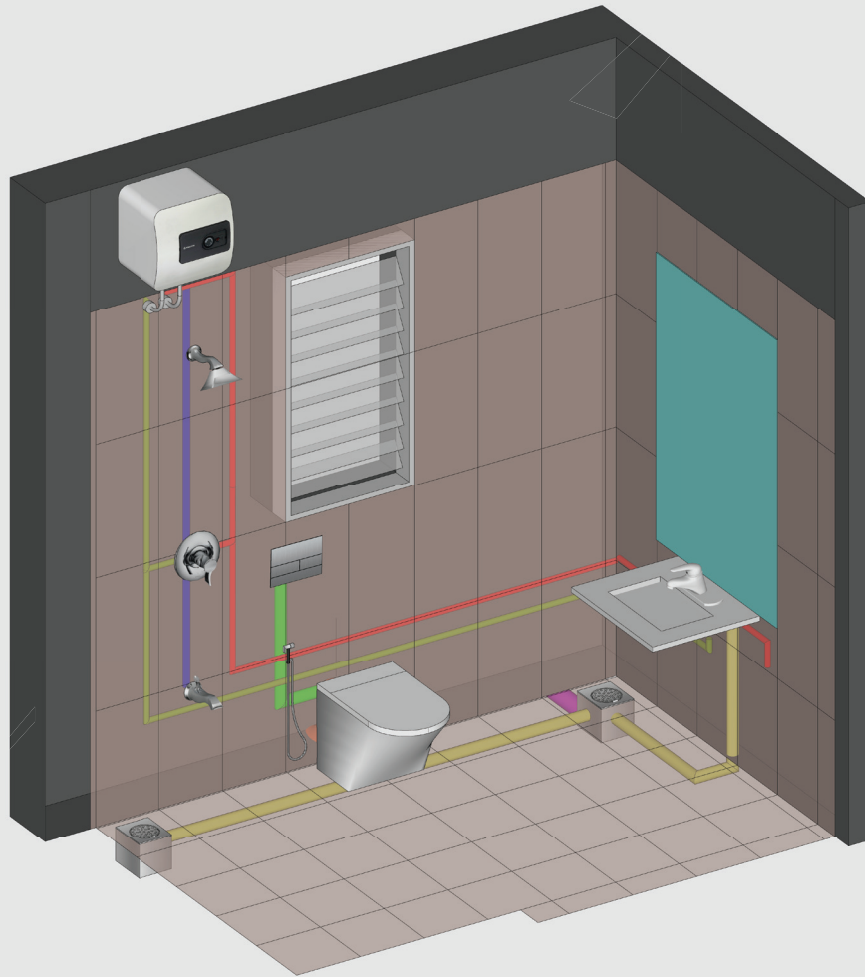
Flat no. 5 & 6



# PLUMBING LAYOUT

## Toilet 1

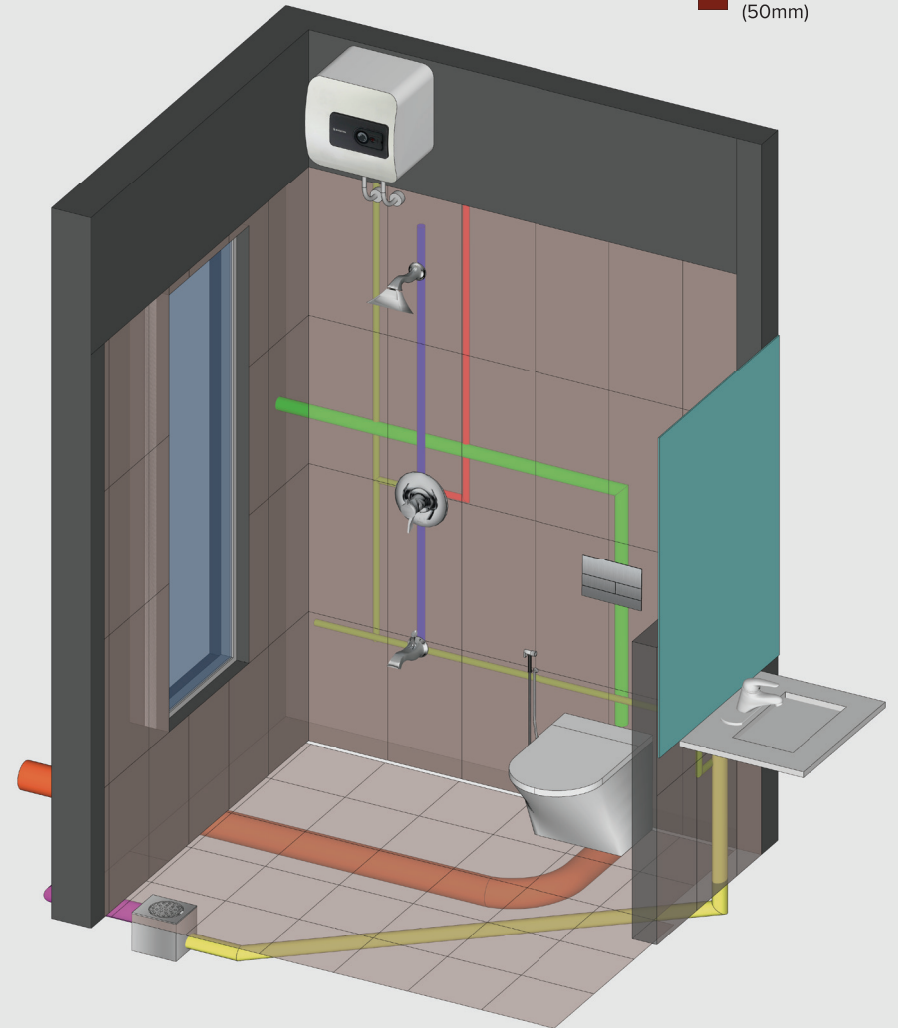
- Hot Water
- Cold Water
- Hot + Cold Water
- Waste Water Pipe (110mm)
- Waste Water Pipe (75mm)
- Waste Water Pipe (40mm)
- Flush Pipe (50mm)



# PLUMBING LAYOUT

## Toilet 2

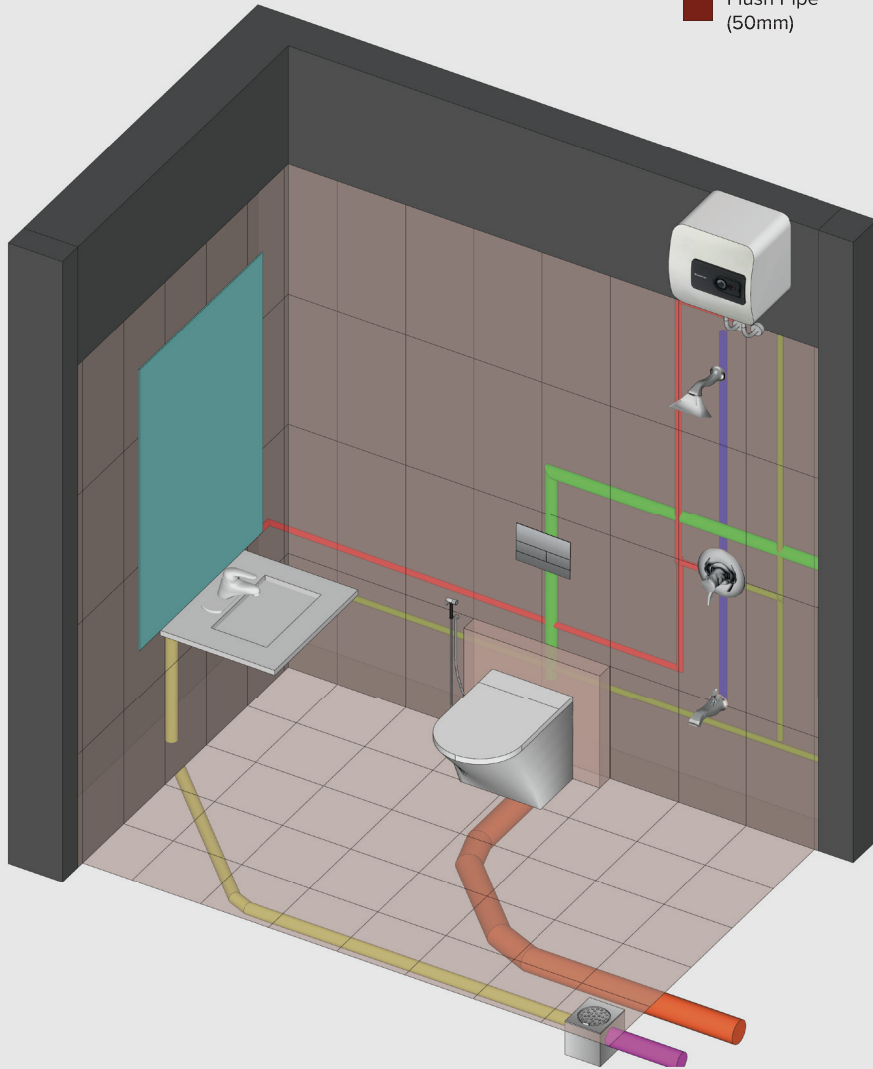
- Hot Water
- Cold Water
- Hot + Cold Water
- Waste Water Pipe (110mm)
- Waste Water Pipe (75mm)
- Waste Water Pipe (40mm)
- Flush Pipe (50mm)



# PLUMBING LAYOUT

## Toilet 3

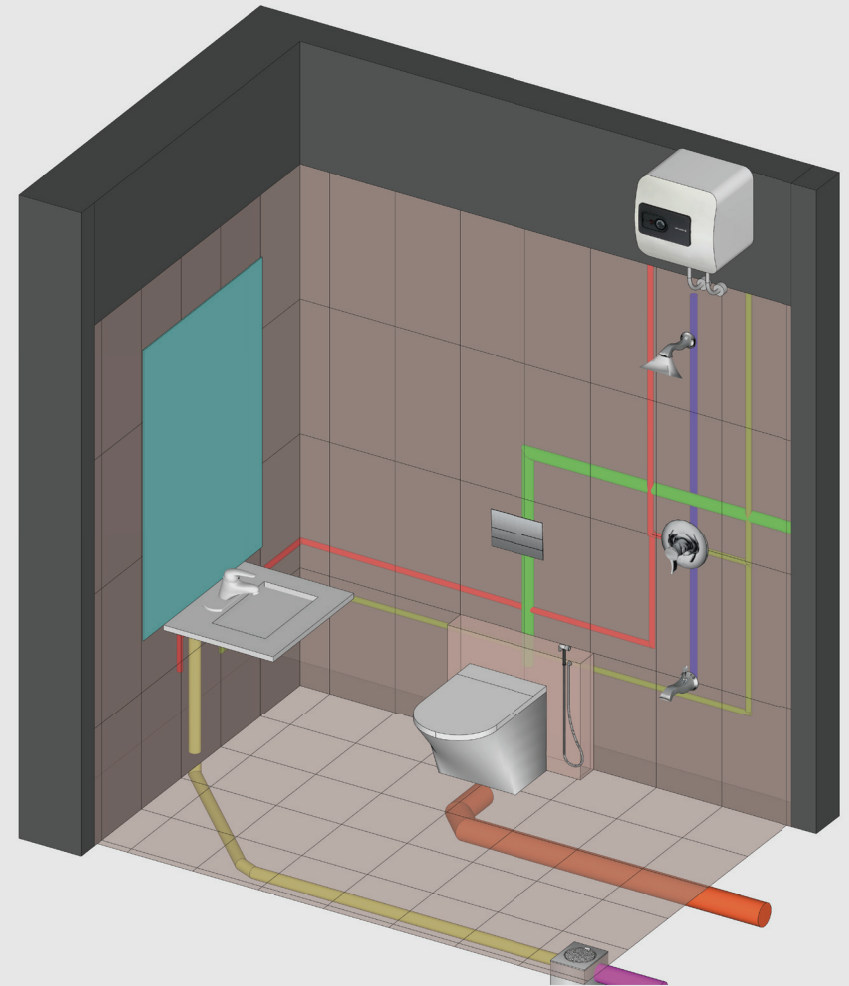
- Hot Water
- Cold Water
- Hot + Cold Water
- Waste Water Pipe (110mm)
- Waste Water Pipe (75mm)
- Waste Water Pipe (40mm)
- Flush Pipe (50mm)



# PLUMBING LAYOUT

## Toilet 4

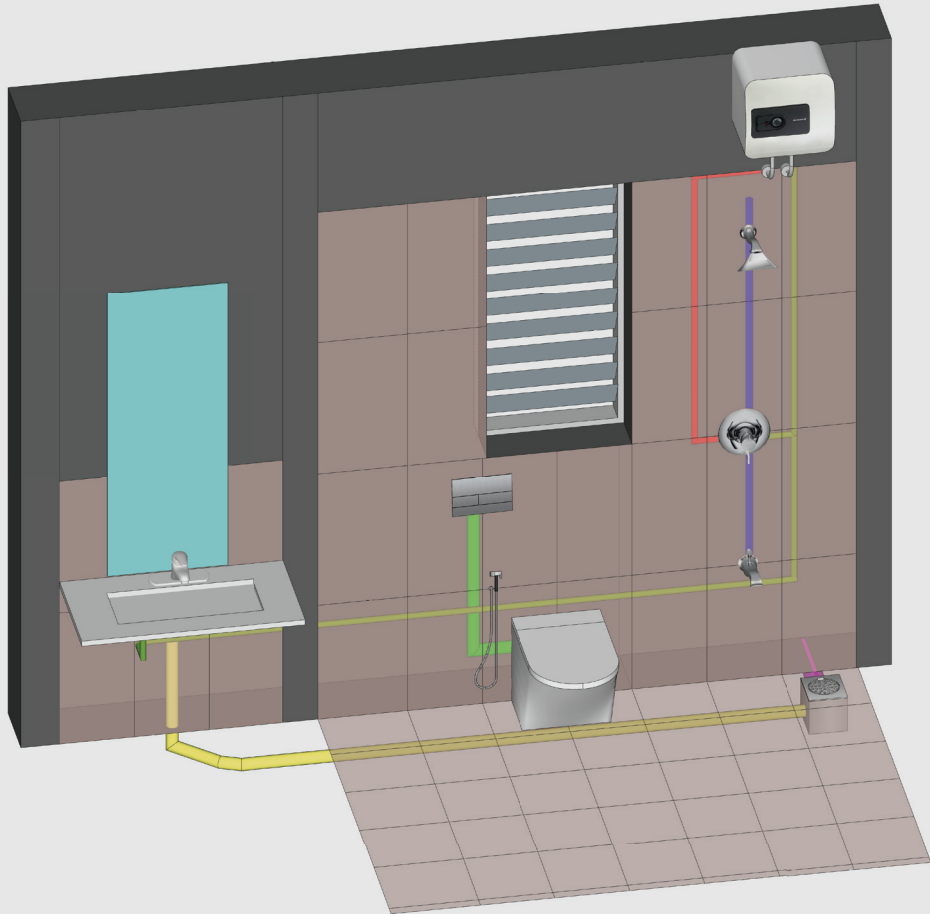
- Hot Water
- Cold Water
- Hot + Cold Water
- Waste Water Pipe (110mm)
- Waste Water Pipe (75mm)
- Waste Water Pipe (40mm)
- Flush Pipe (50mm)



# PLUMBING LAYOUT

## Toilet 5

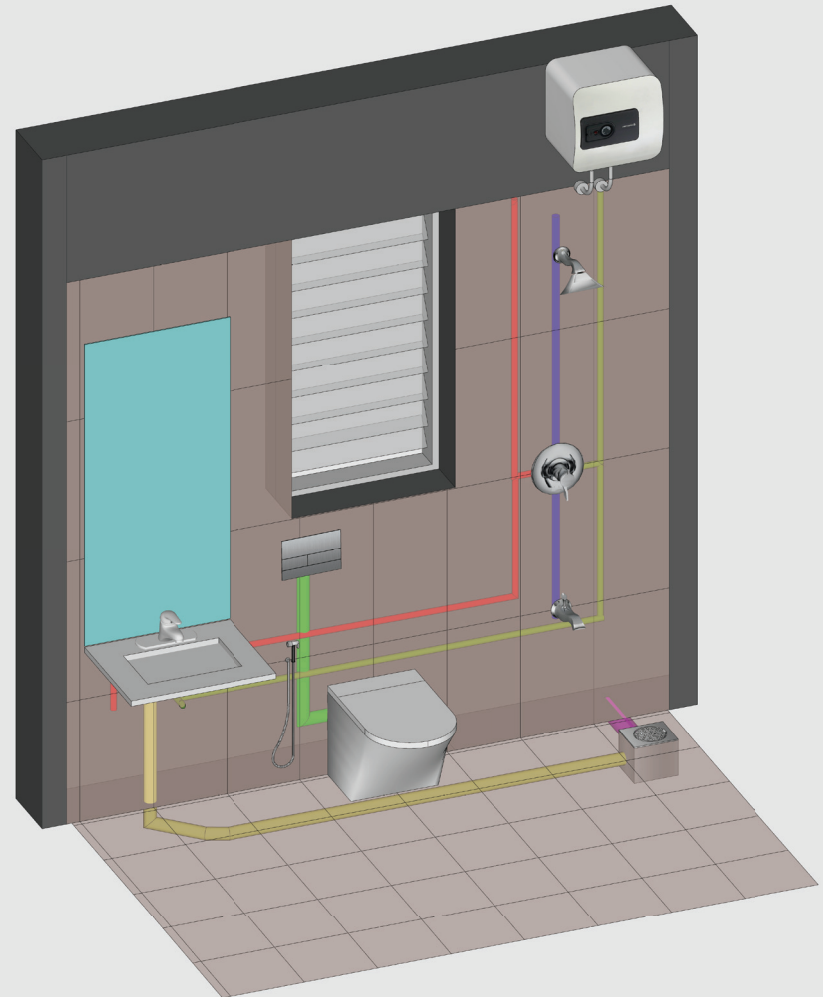
- Hot Water
- Cold Water
- Hot + Cold Water
- Waste Water Pipe (110mm)
- Waste Water Pipe (75mm)
- Waste Water Pipe (40mm)
- Flush Pipe (50mm)



# PLUMBING LAYOUT

## Toilet 6

- Hot Water
- Cold Water
- Hot + Cold Water
- Waste Water Pipe (110mm)
- Waste Water Pipe (75mm)
- Waste Water Pipe (40mm)
- Flush Pipe (50mm)

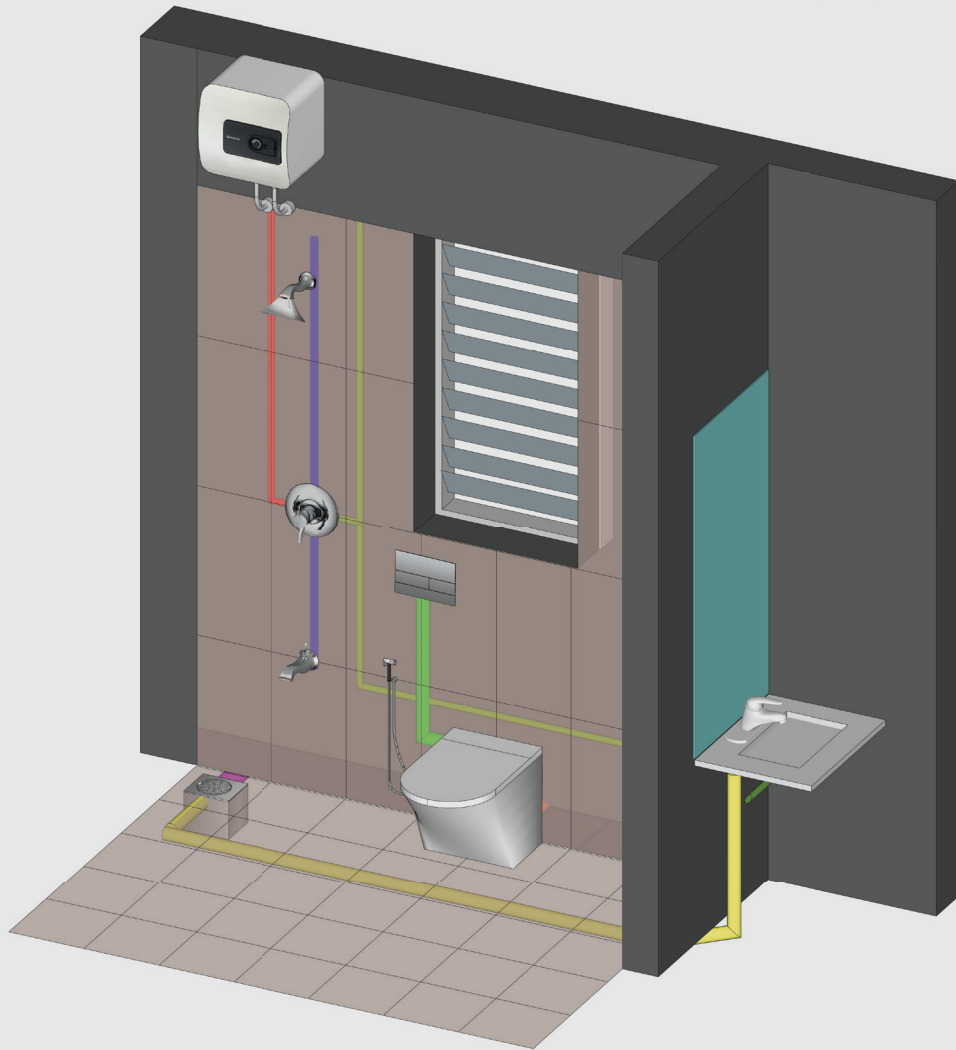




# PLUMBING LAYOUT

## Toilet 7

- Hot Water
- Cold Water
- Hot + Cold Water
- Waste Water Pipe (110mm)
- Waste Water Pipe (75mm)
- Waste Water Pipe (40mm)
- Flush Pipe (50mm)



# PLUMBING LAYOUT

## Toilet 8

- Hot Water
- Cold Water
- Hot + Cold Water
- Waste Water Pipe (110mm)
- Waste Water Pipe (75mm)
- Waste Water Pipe (40mm)
- Flush Pipe (50mm)

