



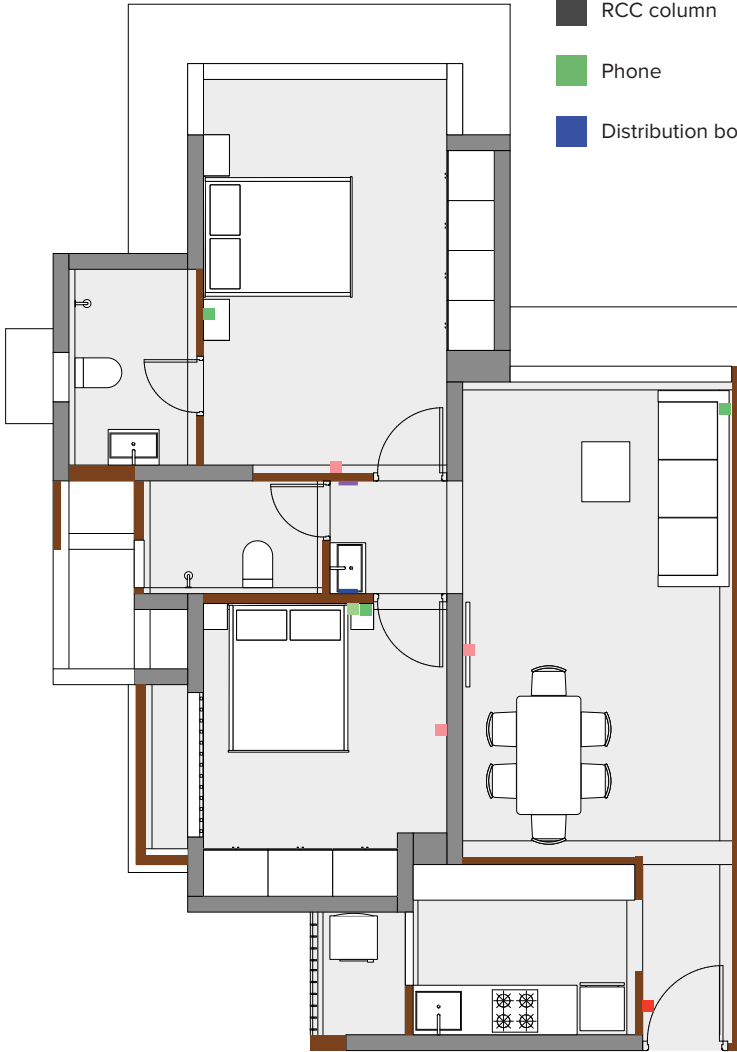
Service
PLAN

We want the transition to your new home to be as smooth as possible. This section gives a detailed layout of the apartment and highlights the electrical and plumbing lines. It will help your contractor to understand the internal wirings so that any changes you make can be easy and hassle free.

SERVICES LAYOUT

Flat no. 1 & 2

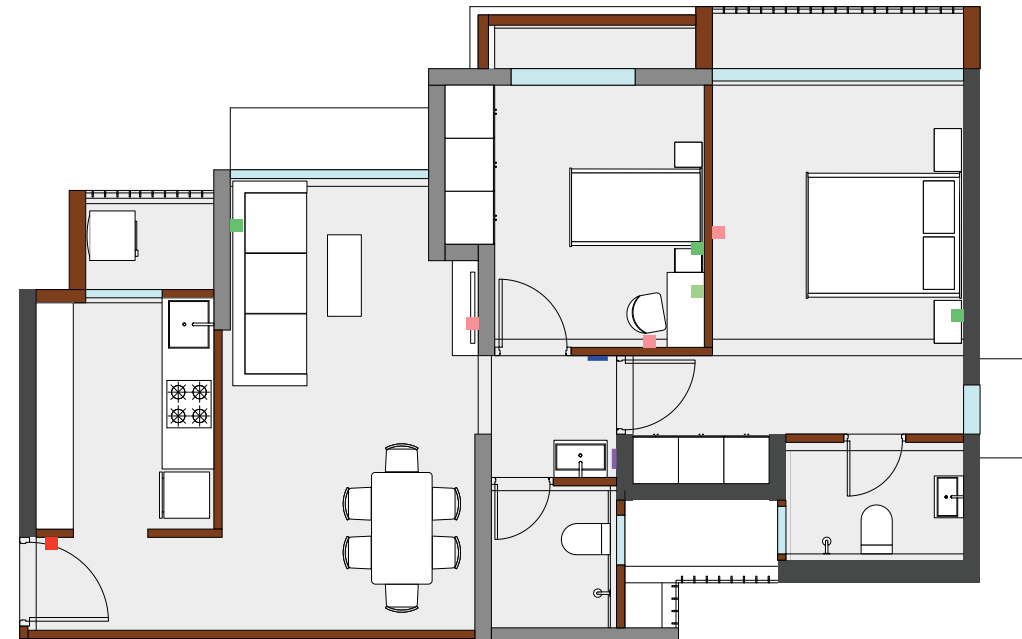
- Structural Wall
- LVDB
- RCC column
- Phone
- Distribution board
- LAN
- Window
- TV
- Intercom
- Non structural wall



SERVICES LAYOUT

Flat no. 3, 4, 7 & 8

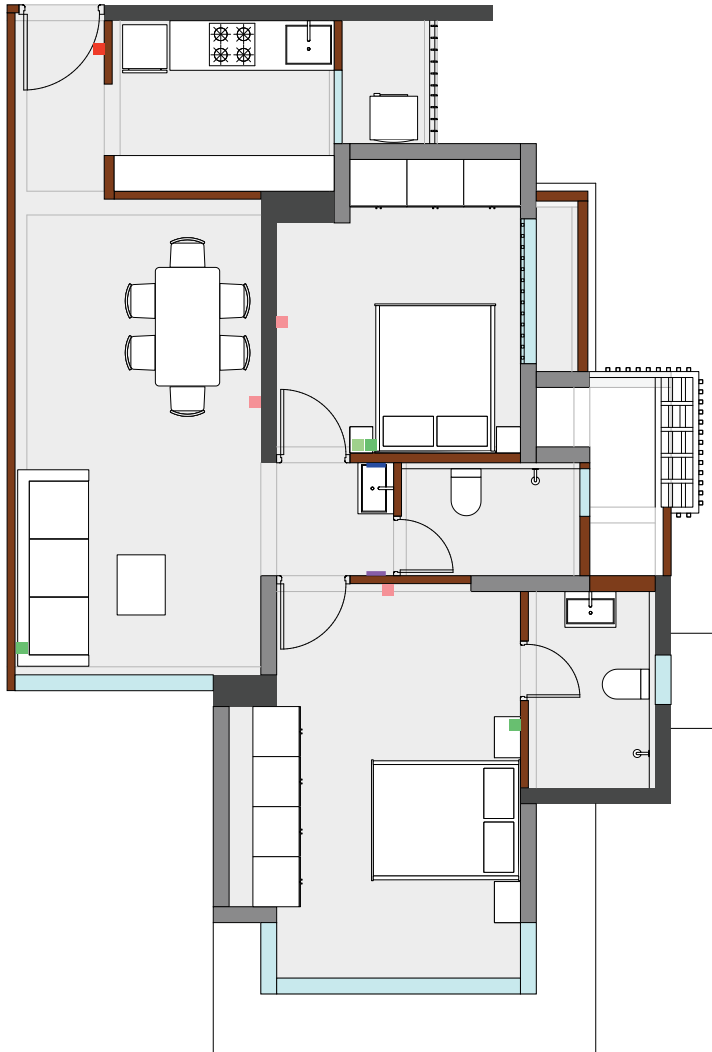
- Structural Wall
- LVDB
- RCC column
- Phone
- Distribution board
- LAN
- Window
- TV
- Intercom
- Non structural wall



SERVICES LAYOUT

Flat no. 5 & 6

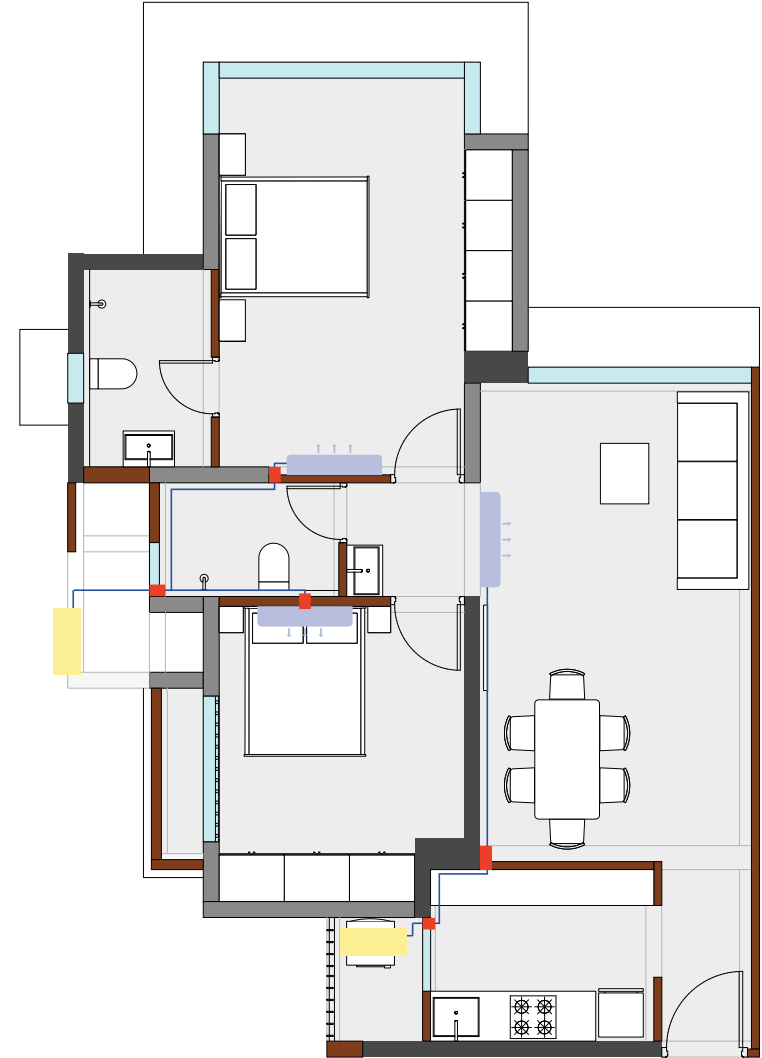
- Structural Wall
- LVDB
- RCC column
- Phone
- Distribution board
- LAN
- Window
- TV
- Intercom
- Non structural wall



AC WIRING LAYOUT

Flat no. 1 & 2

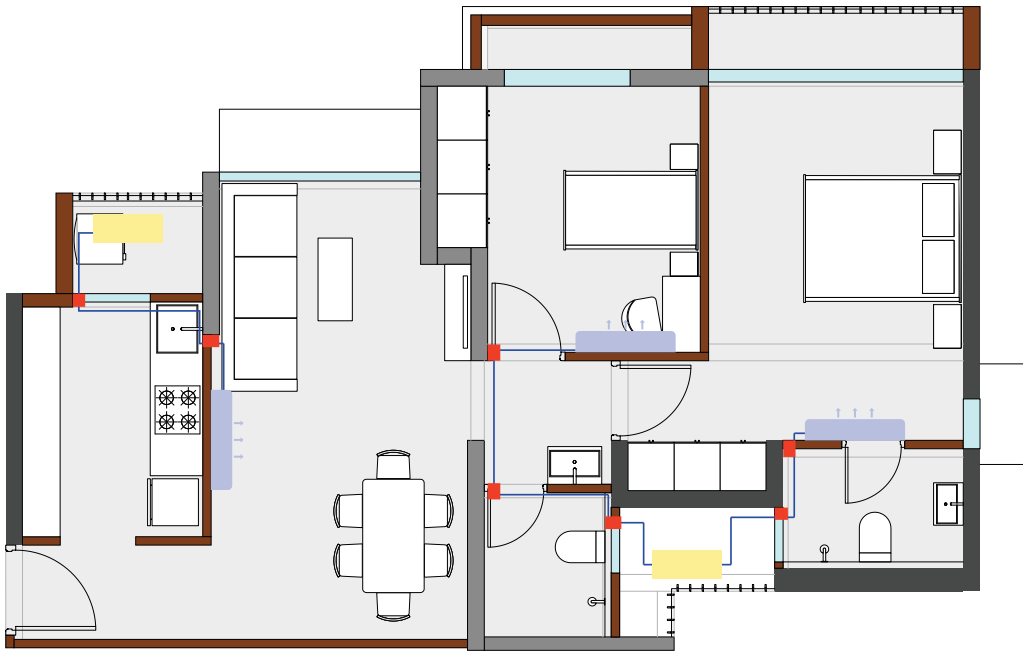
- AC
- Outdoor unit
- Sleeve
- Copper Pipe



AC WIRING LAYOUT

Flat no. 3, 4, 7 & 8

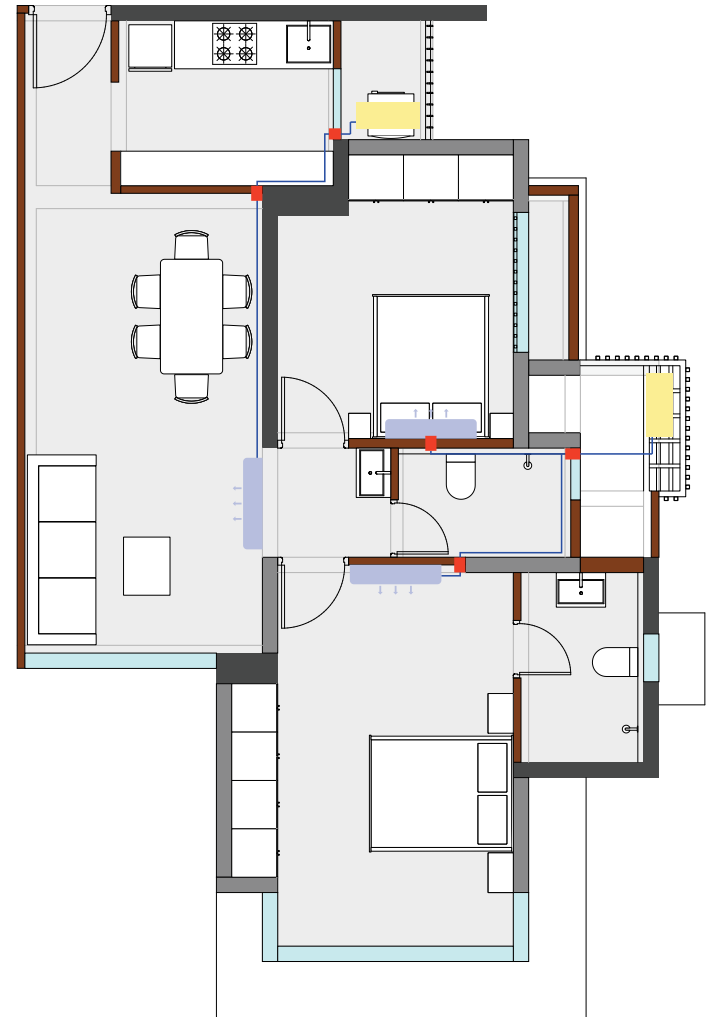
- AC
- Outdoor unit
- Sleeve
- Copper Pipe



AC WIRING LAYOUT

Flat no. 5 & 6

- AC
- Outdoor unit
- Sleeve
- Copper Pipe



PLUMBING LAYOUT Toilet 1

- Hot Water
- Cold Water
- Hot + Cold Water
- Soil Pipe (110mm)
- Waste Water Pipe (75mm)
- Flush Pipe (32mm)



PLUMBING LAYOUT Toilet 2

- Hot Water
- Cold Water
- Hot + Cold Water
- Soil Pipe (110mm)
- Waste Water Pipe (75mm)
- Flush Pipe (32mm)



PLUMBING LAYOUT Toilet 3

- Hot Water
- Cold Water
- Hot + Cold Water
- Soil Pipe (110mm)
- Waste Water Pipe (75mm)
- Flush Pipe (32mm)



PLUMBING LAYOUT Toilet 4

- Hot Water
- Cold Water
- Hot + Cold Water
- Soil Pipe (110mm)
- Waste Water Pipe (75mm)
- Flush Pipe (32mm)

