

THE
NIRVANA
COLLECTION
FLOOR PLANS



← Towards JNPT

NH4B

Towards Palaspe Phata →

A

B

C

D

Phase 2

Phase 3

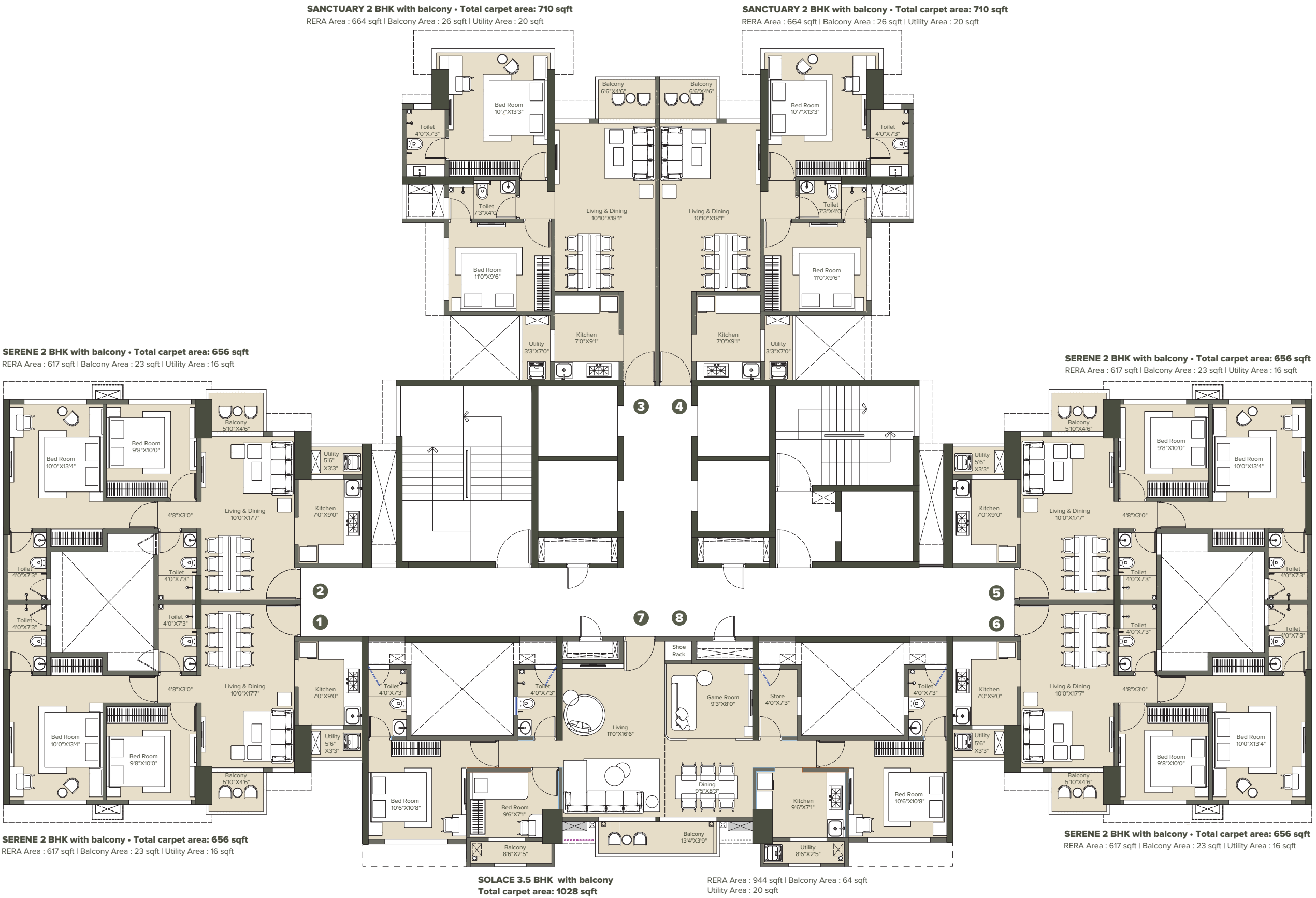
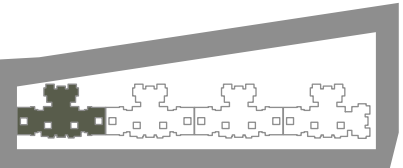
Phase 1

THE
NIRVANA
COLLECTION



BUILDING PLAN

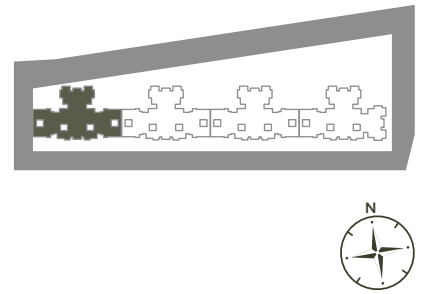
Typical Floor Plan
(7TH TO 12TH FLOOR)



Floors 7 & 12 are refuge floors and the following flats are not available for sale:
Flat no. 8 is not available on above refuge floors.

BUILDING PLAN

Typical Floor Plan
(13TH TO 28TH FLOOR)



SANCTUARY 2 BHK with balcony • Total carpet area: 710 sqft
RERA Area : 664 sqft | Balcony Area : 26 sqft | Utility Area : 20 sqft

SANCTUARY 2 BHK with balcony • Total carpet area: 710 sqft
RERA Area : 664 sqft | Balcony Area : 26 sqft | Utility Area : 20 sqft

SERENE 2 BHK with balcony • Total carpet area: 656 sqft
RERA Area : 617 sqft | Balcony Area : 23 sqft | Utility Area : 16 sqft

SERENE 2 BHK with balcony • Total carpet area: 656 sqft
RERA Area : 617 sqft | Balcony Area : 23 sqft | Utility Area : 16 sqft



SERENE 2 BHK with balcony • Total carpet area: 656 sqft
RERA Area : 617 sqft | Balcony Area : 23 sqft | Utility Area : 16 sqft

SERENE 2 BHK with balcony • Total carpet area: 656 sqft
RERA Area : 617 sqft | Balcony Area : 23 sqft | Utility Area : 16 sqft

SOLACE 3.5 BHK with balcony
Total carpet area: 1080 sqft

RERA Area : 1000 sqft | Balcony Area : 64 sqft
Utility Area : 20 sqft

Floors 17, 22 & 27 are refuge floors and the following flats are not available for sale: Flat no. 8 is not available on above refuge floors. Floor 15 is fire surge floor and the following flats are not available for sale: Flat no. 1 & 8 are not available on above fire surge floor.

SERENE 2 BHK

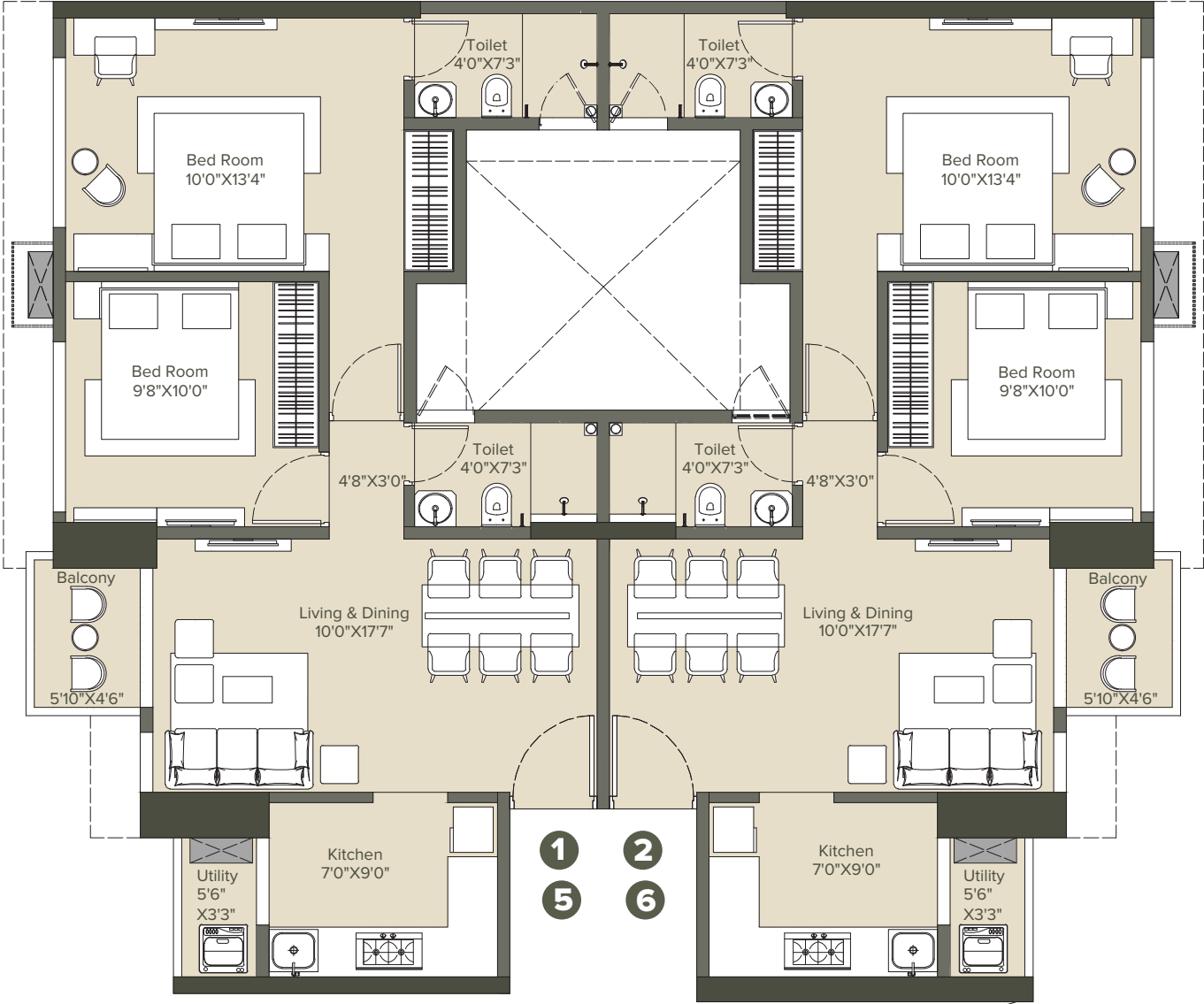
UNIT 1, 2, 5 & 6 (7TH TO 28TH FLOOR)

Total Area: 656 sqft

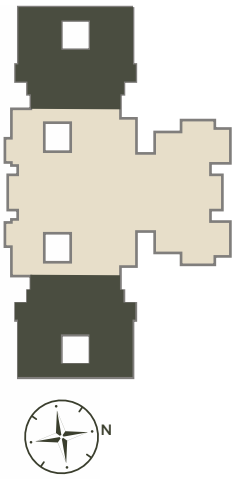
RERA Area : 617 sqft

Balconies Area : 23 sqft

Utility Area : 16 sqft



Floor 15 is fire surge floor
Flat no 1 is not available for sale.



Take a virtual tour



SANCTUARY 2 BHK

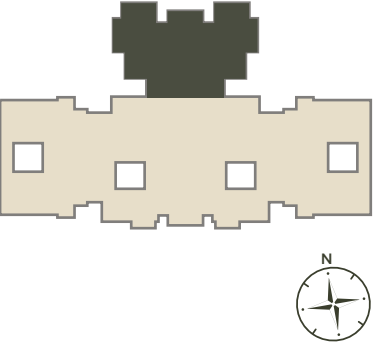
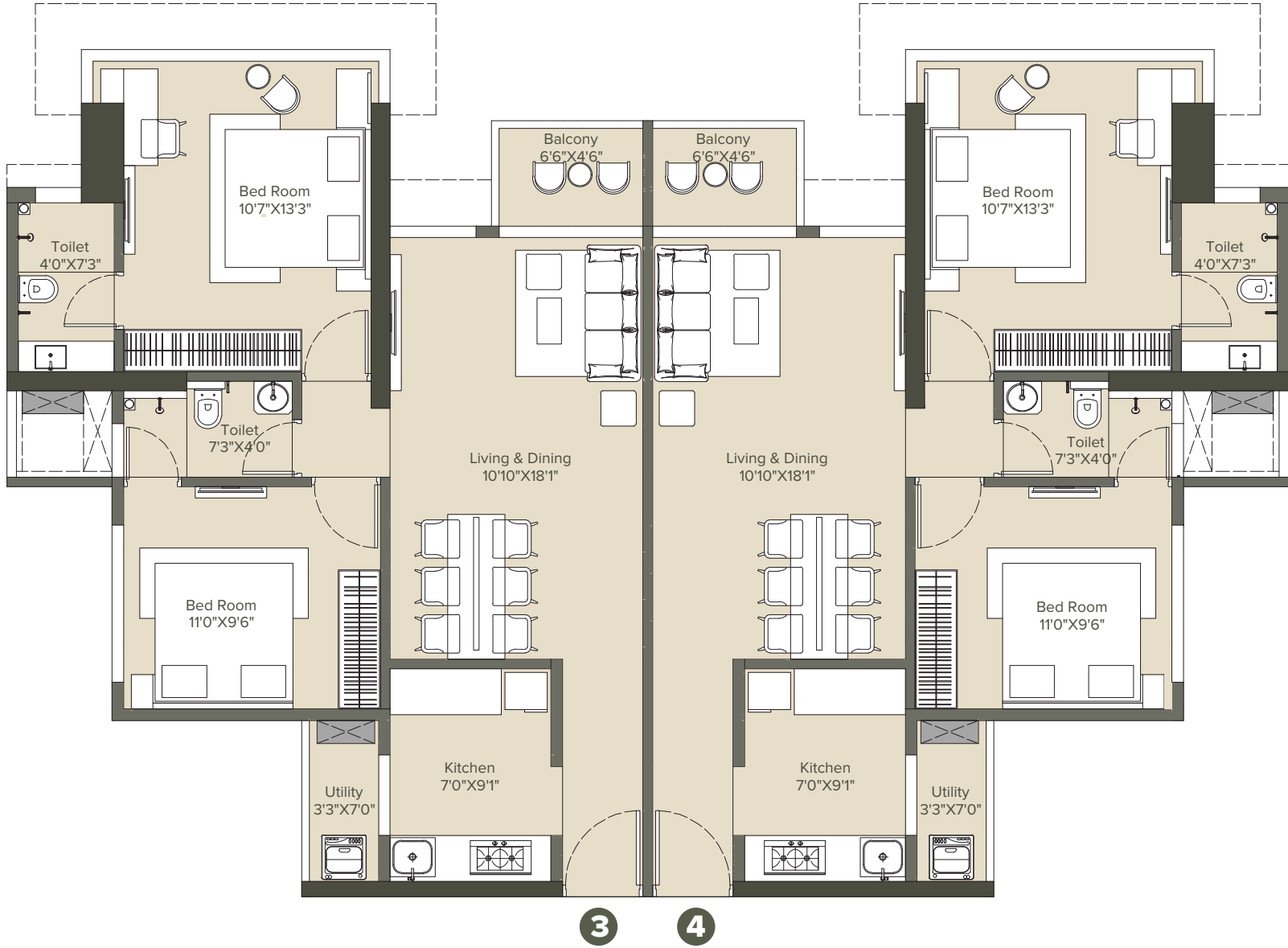
UNIT 3 & 4 (7TH TO 28TH FLOOR)

Total Area: 710 sqft

RERA Area : 664 sqft

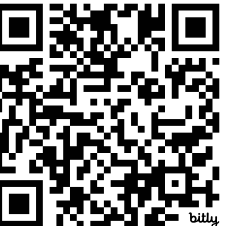
Balconies Area : 26 sqft

Utility Area : 20 sqft



RETREAT 5 BHK unit is a combination of SANCTUARY 2 BHK + SANCTUARY 2 BHK.
 Floors 7,12,17, 22 & 27 are refuge floors and the following flats are not available for sale: Flat no. 8 is not available on above refuge floors.
 Floor 15 is fire surge floor and the following flats are not available for sale: Flat no. 1 & 8 are not available on above fire surge floor.

Take a virtual tour



SOLACE 3.5 BHK

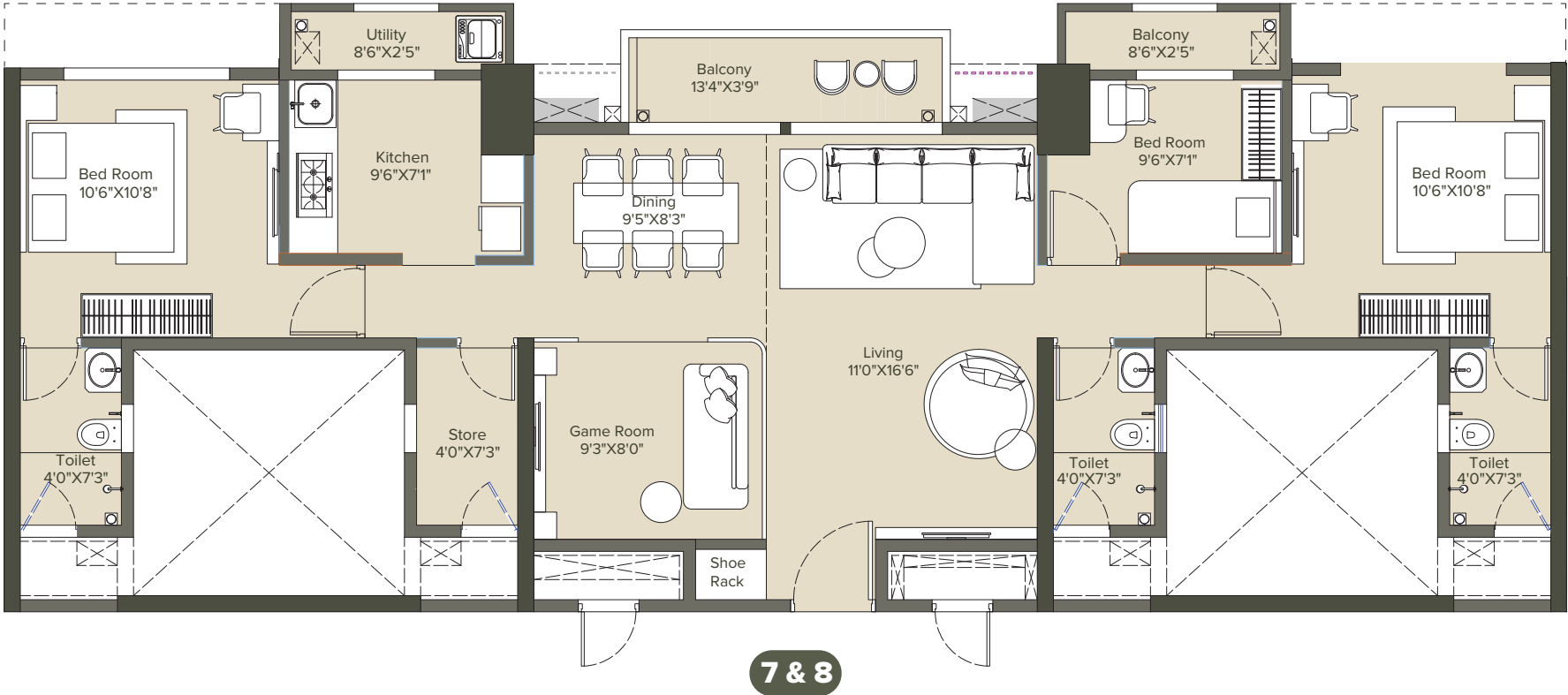
UNIT 7 & 8 (7TH TO 12TH FLOORS)

Total Area: 1028 sqft

RERA Area : 944 sqft

Balconies Area : 64 sqft

Utility Area : 20 sqft



SOLACE 3.5 BHK unit is a combination of BLOOM 1 BHK + BLOOM 1 BHK.
Floors 7,12,17, 22 & 27 are refuge floors and the following flats are not available for sale: Flat no. 8 is not available on above refuge floors.
Floor 15 is fire surge floor and the following flats are not available for sale: Flat no. 1 & 8 are not available on above fire surge floor.

Take a virtual tour



SOLACE 3.5 BHK

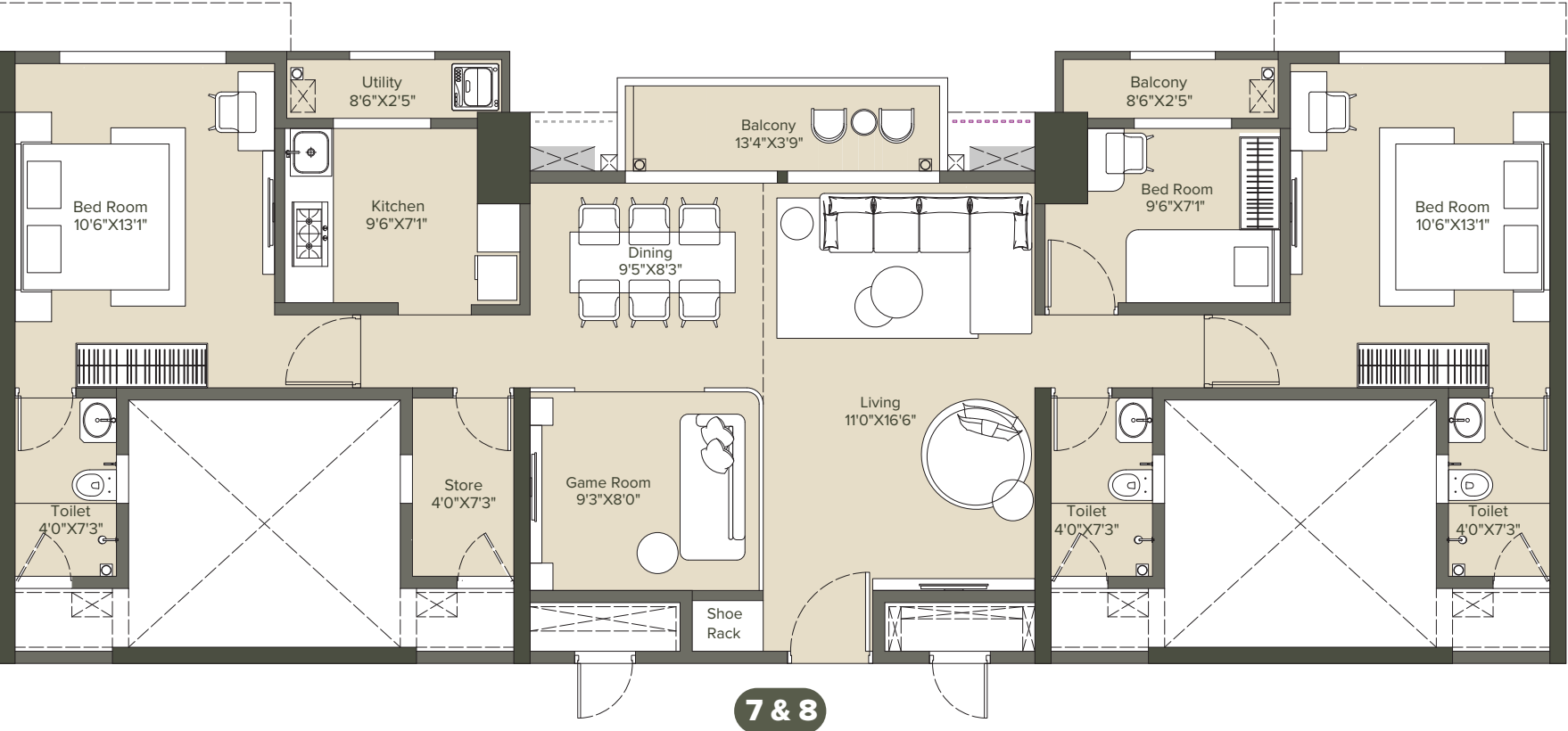
UNIT 7 & 8 (13TH TO 28TH FLOORS)

Total Area: 1080 sqft

RERA Area : 1000 sqft

Balconies Area : 64 sqft

Utility Area : 20 sqft



SOLACE 3.5 BHK unit is a combination of BLOOM 1 BHK + BLOOM 1 BHK.
Floors 7,12,17, 22 & 27 are refuge floors and the following flats are not available for sale: Flat no. 8 is not available on above refuge floors.
Floor 15 is fire surge floor and the following flats are not available for sale: Flat no. 1 & 8 are not available on above fire surge floor.

Take a virtual tour



HORIZON 4.5 BHK

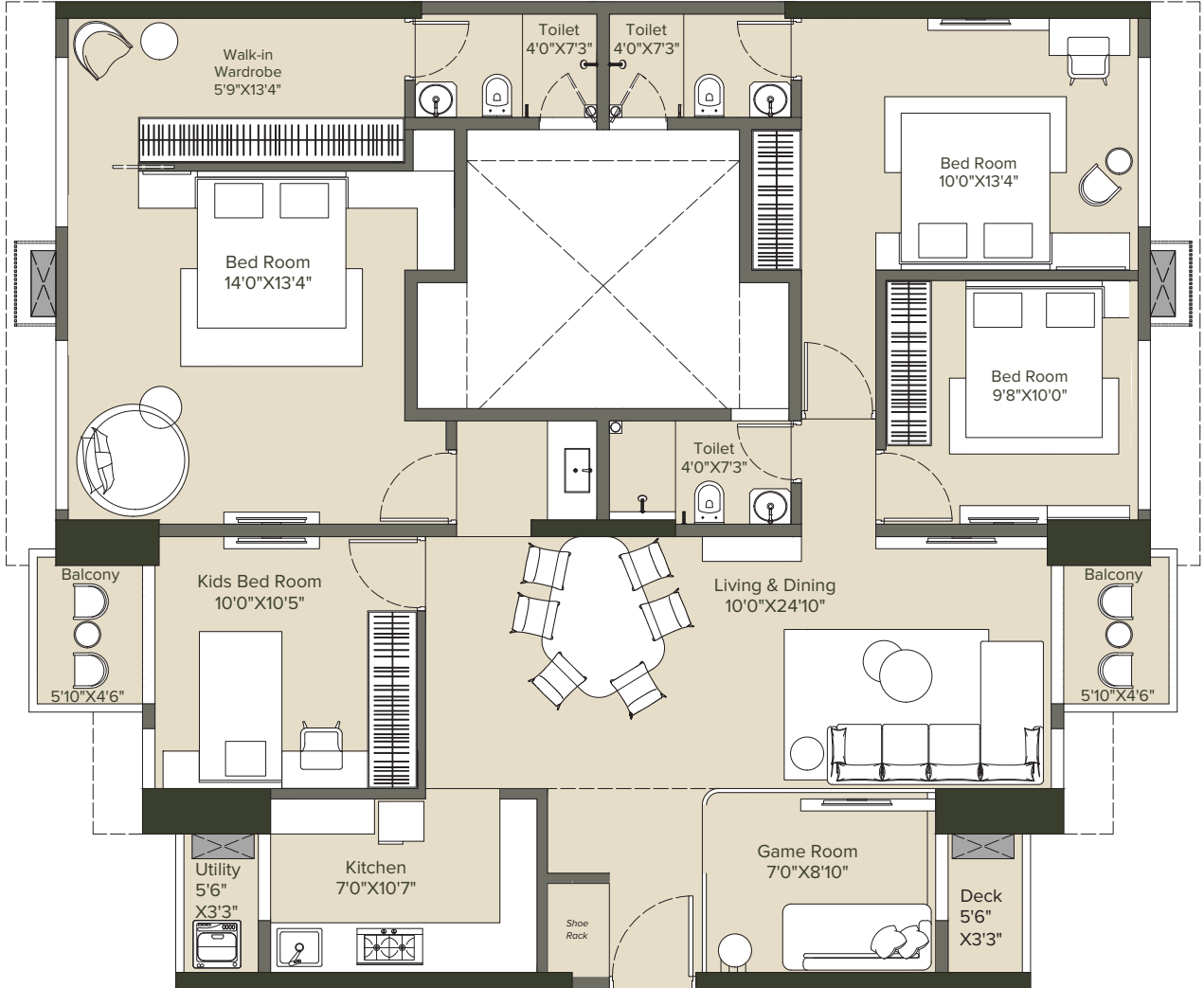
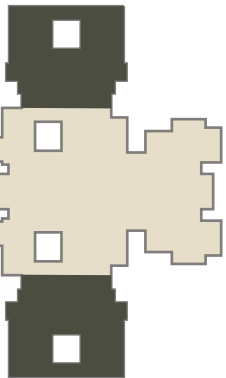
UNIT 1 & 2, 5 & 6

Total Area: 1385 sqft

RERA Area : 1307 sqft

Balconies Area : 62 sqft

Utility Area : 16 sqft



1 & 2

5 & 6



Take a virtual tour



HORIZON 4.5 BHK unit is a combination of SERENE 2 BHK + SERENE 2 BHK.
 Floors 7,12,17, 22 & 27 are refuge floors and the following flats are not available for sale: Flat no. 8 is not available on above refuge floors.
 Floor 15 is fire surge floor and the following flats are not available for sale: Flat no. 1 & 8 are not available on above fire surge floor.

RETREAT 5 BHK

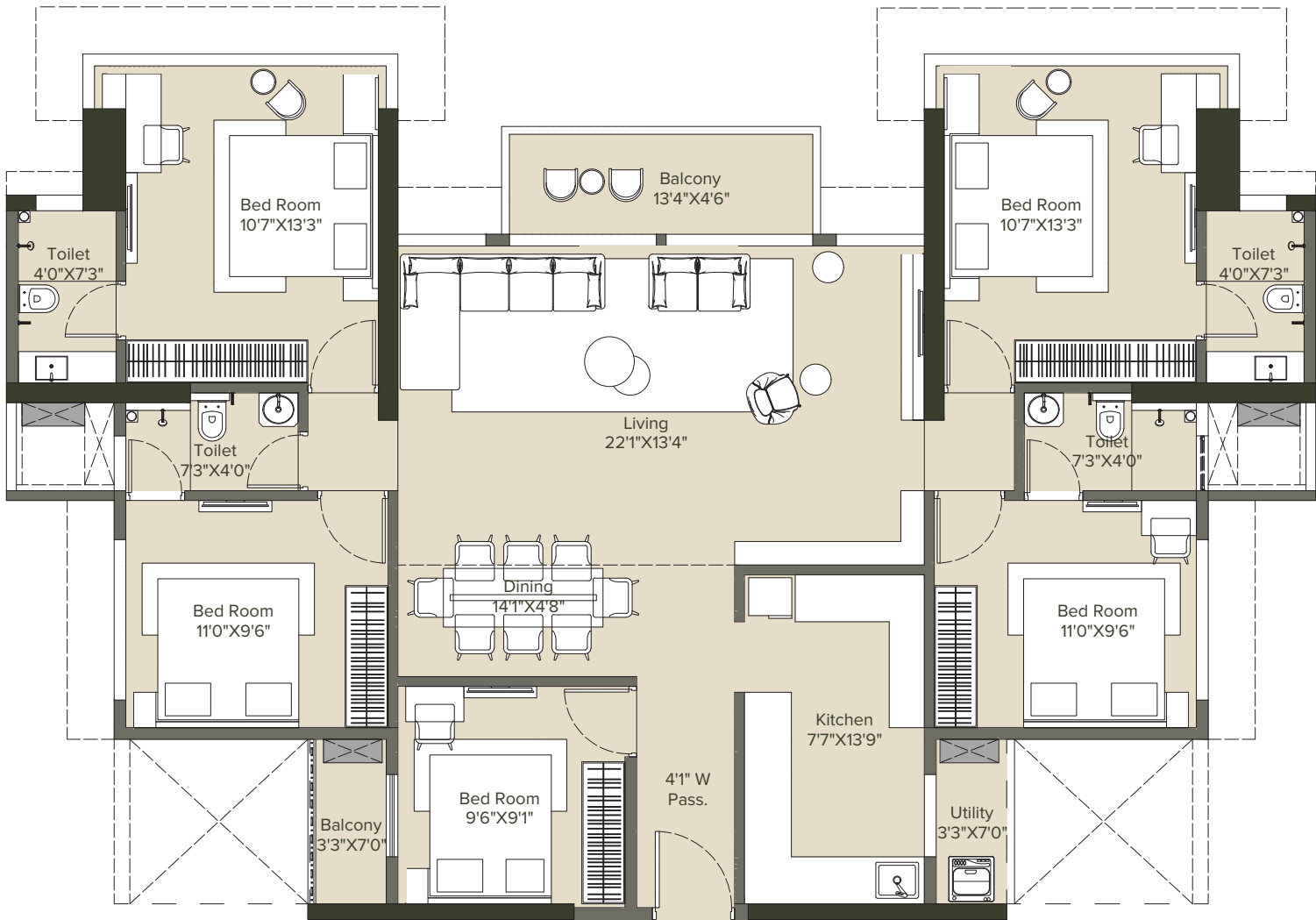
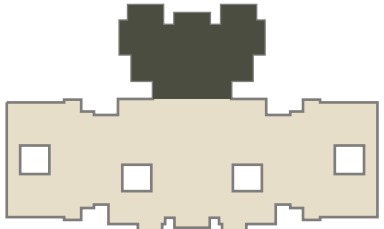
UNIT 3 & 4

Total Area: 1431 sqft

RERA Area : 1337 sqft

Balconies Area : 74 sqft

Utility Area : 20 sqft



3 & 4



Take a virtual tour



RETREAT 5 BHK unit is a combination of SANCTUARY 2 BHK + SANCTUARY 2 BHK.
 Floors 7,12,17, 22 & 27 are refuge floors and the following flats are not available for sale: Flat no. 8 is not available on above refuge floors.
 Floor 15 is fire surge floor and the following flats are not available for sale: Flat no. 1 & 8 are not available on above fire surge floor.



RERA Registration Number: **PM1273032502296/304**
www.maharera.mahaonline.gov.in

DISCLAIMER

Marathon Nexzone is developed by Sanvo Resorts Private Limited (a Marathon Group Company). The project is registered under the Real Estate (Regulation and Development) Act, 2016 ("RERA")

Details of all RERA-registered phases and towers of the project are available on the MahaRERA website at <https://maharera.mahaonline.gov.in> and on the official project website www.marathon.in/nexzone.

All intending allottees are advised to verify all project details, approvals, plans, specifications, amenities, and schedules as disclosed on the MahaRERA website from time to time.

All images, visuals, renders, walkthroughs, illustrations, drawings, photographs, furniture, fixtures, fittings, furnishings, décor elements, landscaping features, and artistic impressions shown in this brochure or any other promotional material are purely indicative and for representational purposes only and do not form part of the standard specifications of the apartment or the project unless specifically stated in the Agreement for Sale.

The furniture, materials, appliances, loose fittings, soft furnishings, décor elements, accessories, and interior styling shown in sample flats, rendered images, or visuals are not part of the offering and shall not be provided unless expressly mentioned in the Agreement for Sale.

Layouts, plans, elevations, dimensions, specifications, amenities, facilities, services, views, open spaces, and infrastructure shown are subject to variations, modifications, revisions, and approvals by the competent authorities and/or as may be required under applicable laws, rules, regulations, and development conditions.

Carpet areas, dimensions, and specifications of apartments are indicative and subject to permissible variations as allowed under RERA and as finally certified by the competent authority. The final carpet area and specifications shall be as stated in the registered Agreement for Sale.

Nothing contained herein shall constitute a legal offer, promise, representation, or commitment on the part of the Promoter. The Agreement for Sale, executed in accordance with RERA, shall alone govern the rights and obligations of the parties.