

**MARATHON**  
Nexzone  
Panvel

# TRITON - 1 & 2

## Typical Floor Plan With Terrace



- 4

RERA: 658 Sq. Ft.

MOFA: 683 Sq. Ft.
- 5

RERA: 745 Sq. Ft.

MOFA: 749 Sq. Ft.
- 6

RERA: 745 Sq. Ft.

MOFA: 749 Sq. Ft.
- 7

RERA: 658 Sq. Ft.

MOFA: 683 Sq. Ft.



- 3

RERA: 643 Sq. Ft.

MOFA: 639 Sq. Ft.
- 8

RERA: 643 Sq. Ft.

MOFA: 639 Sq. Ft.

- 2

RERA: 913 Sq. Ft.

MOFA: 859 Sq. Ft.
- 1

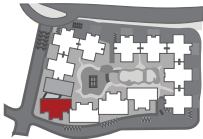
RERA: 913 Sq. Ft.

MOFA: 859 Sq. Ft.



# TRITON - 1 & 2

## Typical Floor Plan Without Terrace



- 4

RERA: 658 Sq. Ft.  
MOFA: 683 Sq. Ft.
- 5

RERA: 736 Sq. Ft.  
MOFA: 749 Sq. Ft.
- 6

RERA: 736 Sq. Ft.  
MOFA: 749 Sq. Ft.
- 7

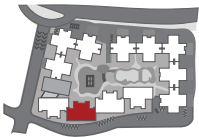
RERA: 658 Sq. Ft.  
MOFA: 683 Sq. Ft.





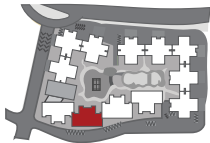
# ANTILIA - 1 & 2

## Typical Floor Plan With Terrace



# ANTILIA - 1 & 2

## Typical Floor Plan Without Terrace



1 RERA: 903 Sq. Ft.  
MOFA: 859 Sq. Ft.

2 RERA: 903 Sq. Ft.  
MOFA: 859 Sq. Ft.

8 RERA: 643 Sq. Ft.  
MOFA: 639 Sq. Ft.

3 RERA: 643 Sq. Ft.  
MOFA: 639 Sq. Ft.



7 RERA: 658 Sq. Ft.  
MOFA: 683 Sq. Ft.

6 RERA: 736 Sq. Ft.  
MOFA: 749 Sq. Ft.

5 RERA: 736 Sq. Ft.  
MOFA: 749 Sq. Ft.

4 RERA: 658 Sq. Ft.  
MOFA: 683 Sq. Ft.

ANTILIA-1 (2 Basements + 1st to 16th Floors); Maha RERA: P52000000666 | ANTILIA-2 (Silt + Podium + 17th to 30th Floors); Maha RERA: P52000000671

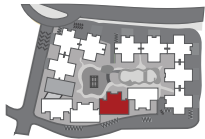
All RERA related details are available at <https://maharera.mahareraonline.gov.in/> as well as our website [marathon.in/hexzone](https://www.marathon.in/hexzone). Customers are requested to visit the said link for details and update themselves with all the necessary details in respect of the project from time to time. The floor plans are as per the approved plans and specifications as on date. These plans may vary by +/- 3% and are subject to changes. The furniture, accessories, etc. shown in the plans does not form a part of the offering. Customers are requested to visit the site office and apprise themselves of all the necessary details prior to making any purchase decisions.





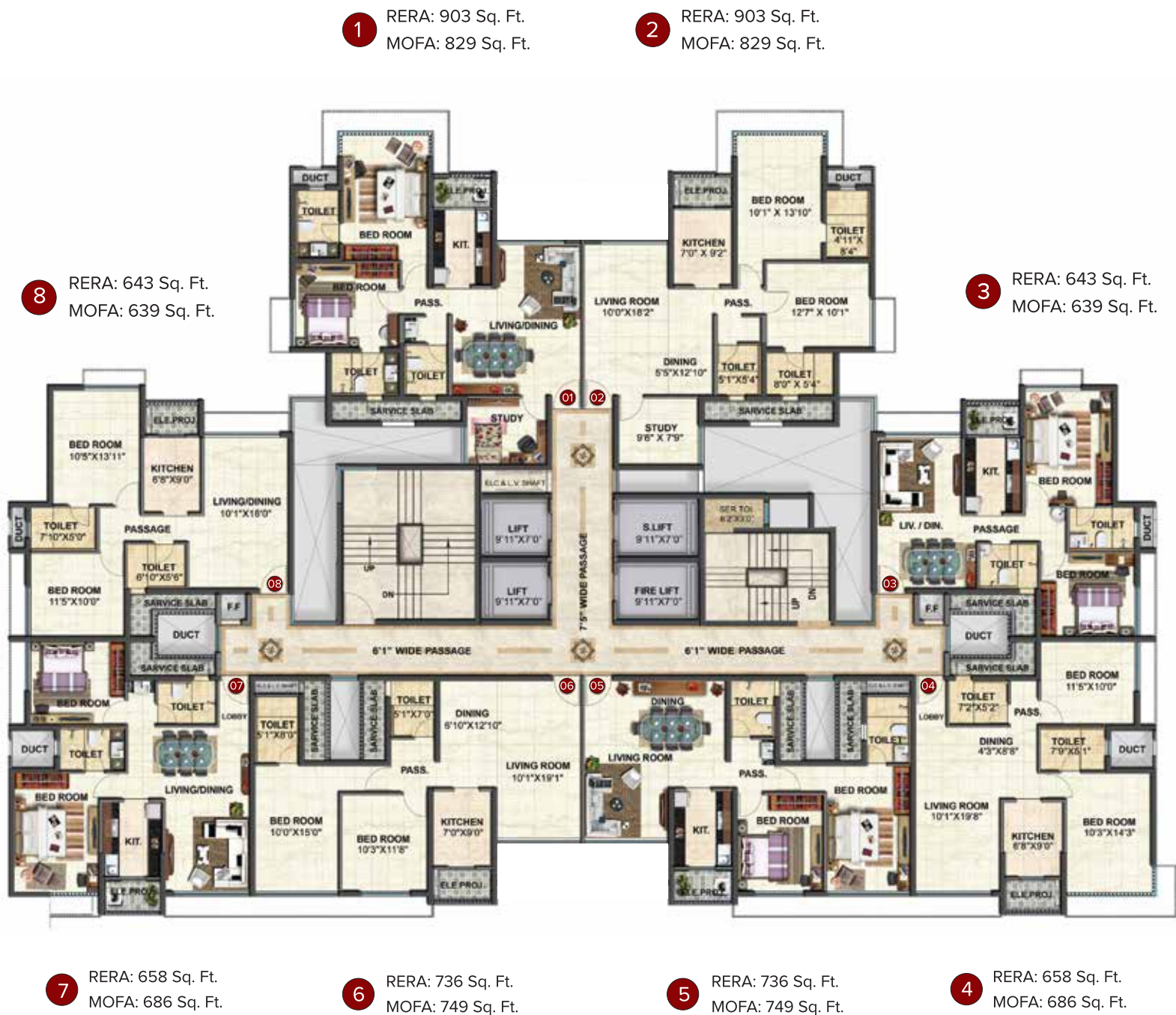
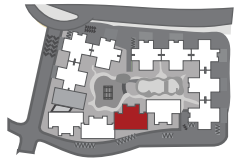
# VEGA - 1 & 2

## Typical Floor Plan With Terrace



# VEGA - 1 & 2

## Typical Floor Plan Without Terrace



VEGA-1 (2 Basements + 1st to 16th Floors): Maha RERA: P52000000674 | VEGA-2 (Slit + Podium + 17th to 31st Floors): Maha RERA: P52000000522

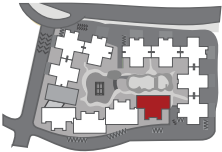
All RERA related details are available at <https://maharera.mahaonline.gov.in/> as well as our website [marathon.in/nexzone](https://marathon.in/nexzone). Customers are requested to visit the said link for details and update themselves with all the necessary details in respect of the project from time to time. The floor plans are as per the approved plans and specifications as on date. These plans may vary by +/- 3% and are subject to changes. The furniture, accessories, etc. shown in the plans does not form a part of the offering. Customers are requested to visit the site office and apprise themselves of all the necessary details prior to making any purchase decisions.





# ION - 1 & 2

## Typical Floor Plan With Terrace



**4** RERA: 658 Sq. Ft.  
MOFA: 686 Sq. Ft.

**5** RERA: 745 Sq. Ft.  
MOFA: 749 Sq. Ft.

**6** RERA: 745 Sq. Ft.  
MOFA: 749 Sq. Ft.

**7** RERA: 658 Sq. Ft.  
MOFA: 686 Sq. Ft.



**3** RERA: 643 Sq. Ft.  
MOFA: 639 Sq. Ft.

**8** RERA: 643 Sq. Ft.  
MOFA: 639 Sq. Ft.

**2** RERA: 913 Sq. Ft.  
MOFA: 829 Sq. Ft.

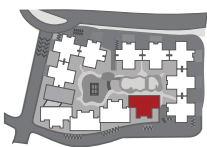
**1** RERA: 913 Sq. Ft.  
MOFA: 829 Sq. Ft.





# ION - 1 & 2

## Typical Floor Plan Without Terrace



4 RERA: 658 Sq. Ft.  
MOFA: 688 Sq. Ft.

5 RERA: 736 Sq. Ft.  
MOFA: 749 Sq. Ft.

6 RERA: 736 Sq. Ft.  
MOFA: 749 Sq. Ft.

7 RERA: 658 Sq. Ft.  
MOFA: 686 Sq. Ft.



3 RERA: 643 Sq. Ft.  
MOFA: 639 Sq. Ft.

8 RERA: 643 Sq. Ft.  
MOFA: 639 Sq. Ft.

2 RERA: 903 Sq. Ft.  
MOFA: 829 Sq. Ft.

1 RERA: 903 Sq. Ft.  
MOFA: 829 Sq. Ft.



# ZODIAC - 1 & 2

## Typical Floor Plan (Floors 1 - 27)



ZODIAC-1 (2 Basements + 1st to 24th Floors); Maha RERA: P52000000547 | ZODIAC-2 (Stilt + Podium + 25th to 32nd Floors); Maha RERA: P52000000661

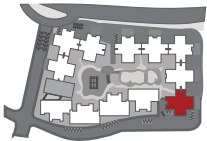
All RERA related details are available at <https://maharera.mahaonline.gov.in/> as well as our website [marathon.in/nexzone](https://marathon.in/nexzone). Customers are requested to visit the said link for details and update themselves with all the necessary details in respect of the project from time to time. The floor plans are as per the approved plans and specifications as on date. These plans may vary by +/- 3% and are subject to changes. The furniture, accessories, etc. shown in the plans does not form a part of the offering. Customers are requested to visit the site office and apprise themselves of all the necessary details prior to making any purchase decisions.





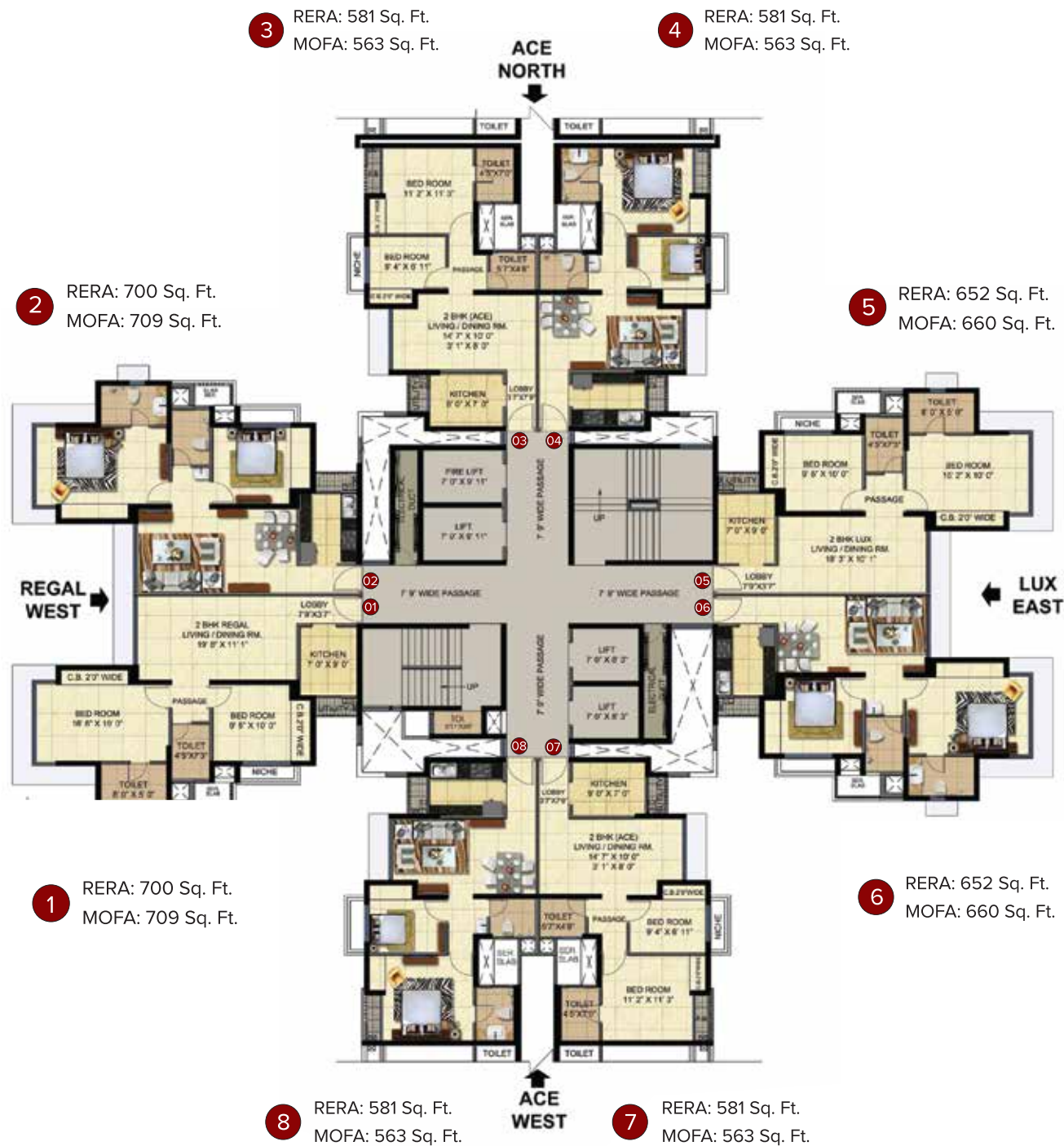
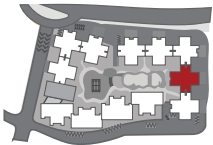
# ZODIAC - 2

## Typical Floor Plan (Floors 28 - 31)



# ZENITH - 1 & 2

## Typical Floor Plan (Floors 1 - 27)



ZENITH-1 (2 Basements + 1st to 24th Floors); Maha RERA: P52000000658 | ZENITH-2 (Stilt + Podium + 25th to 32nd Floors); Maha RERA: P52000000657

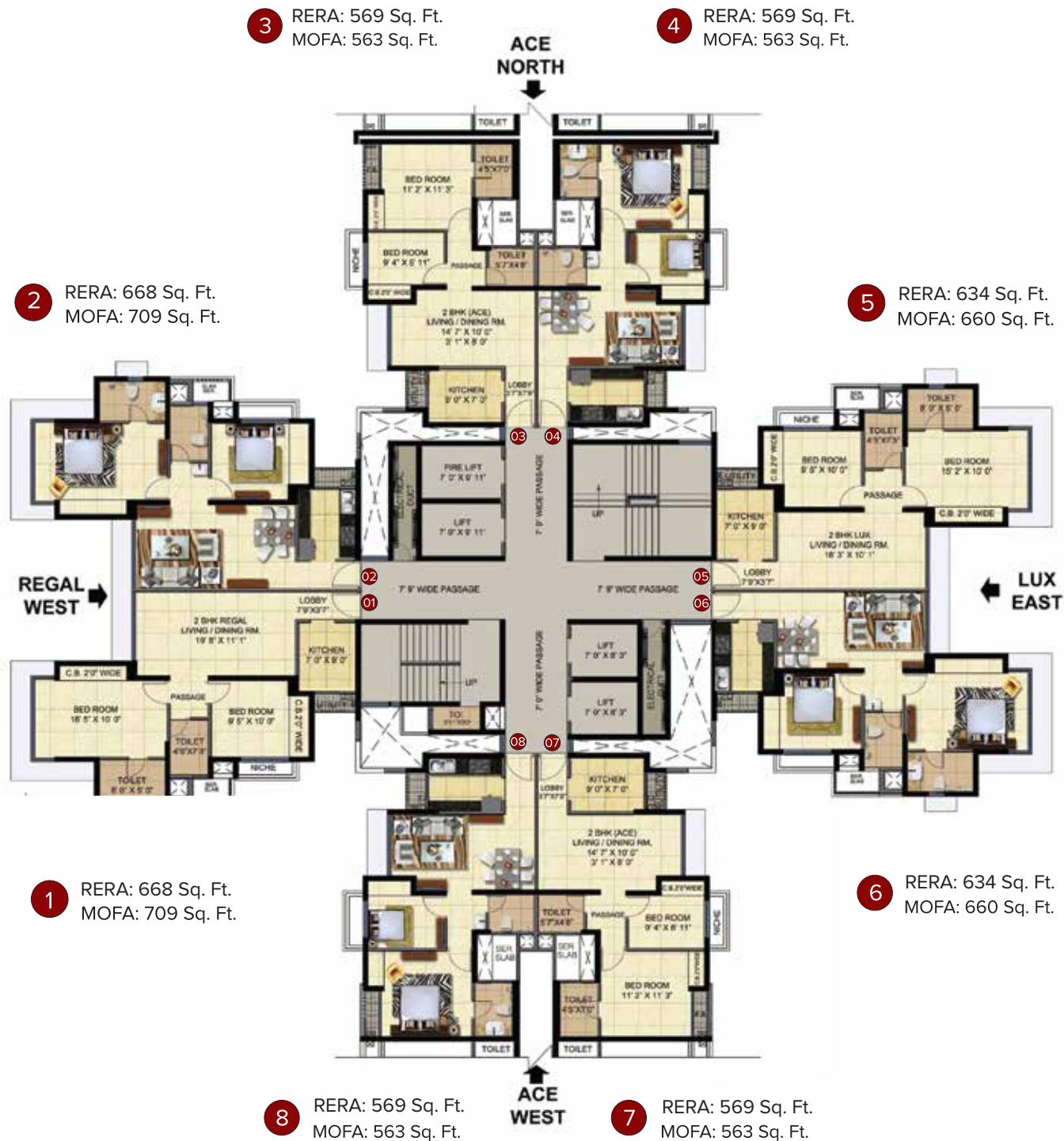
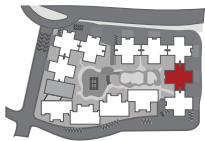
All RERA related details are available at <https://maharera.mahaonline.gov.in/> as well as our website [marathon.in/nexzone](http://marathon.in/nexzone). Customers are requested to visit the said link for details and update themselves with all the necessary details in respect of the project from time to time. The floor plans are as per the approved plans and specifications as on date. These plans may vary by +/- 3% and are subject to changes. The furniture, accessories, etc. shown in the plans does not form a part of the offering. Customers are requested to visit the site office and apprise themselves of all the necessary details prior to making any purchase decisions.





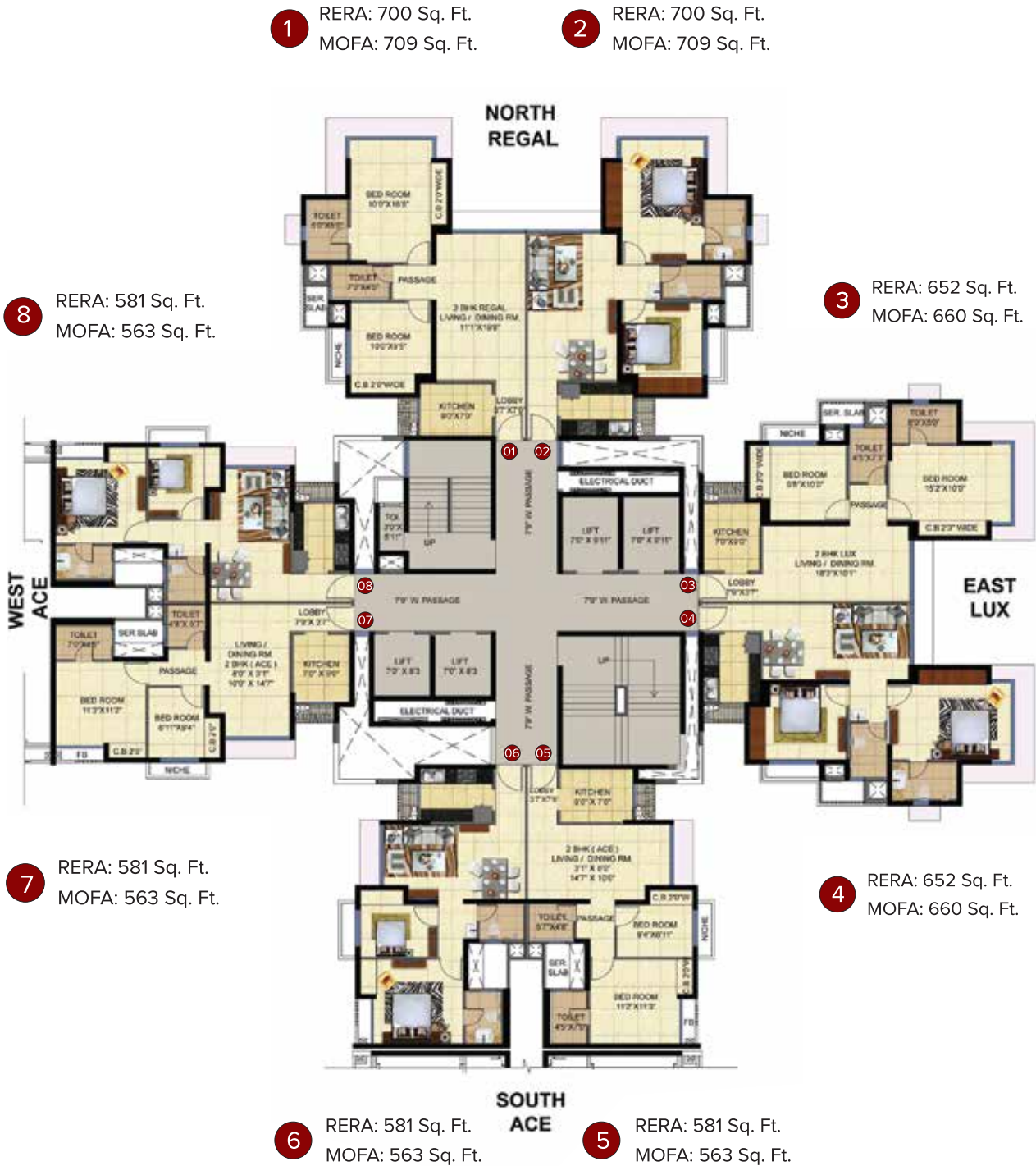
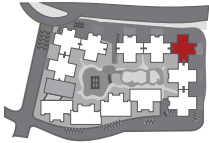
# ZENITH - 2

## Typical Floor Plan (Floors 28 - 31)



# ALTIS - 1 & 2

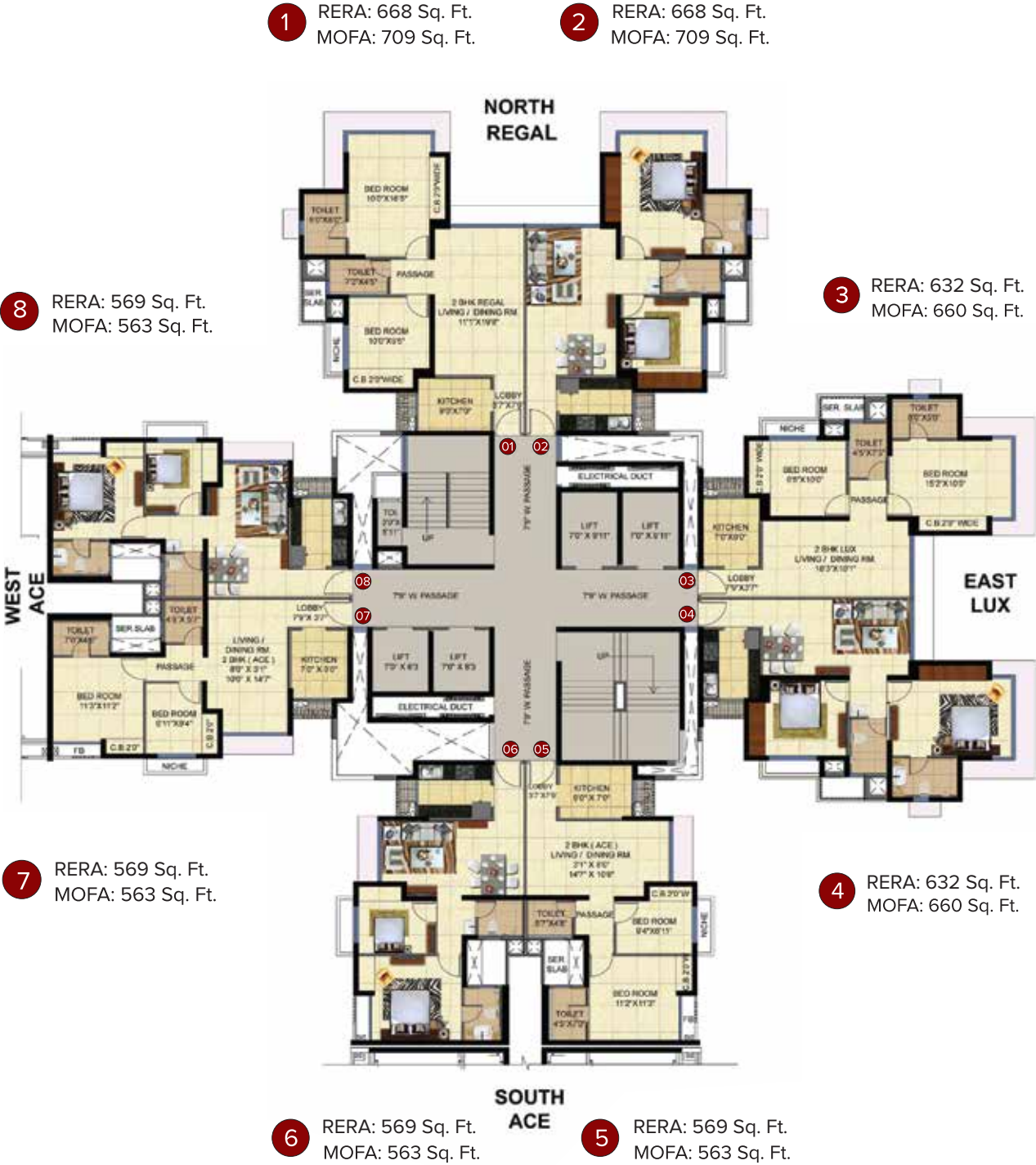
## Typical Floor Plan (Floors 1 - 27)





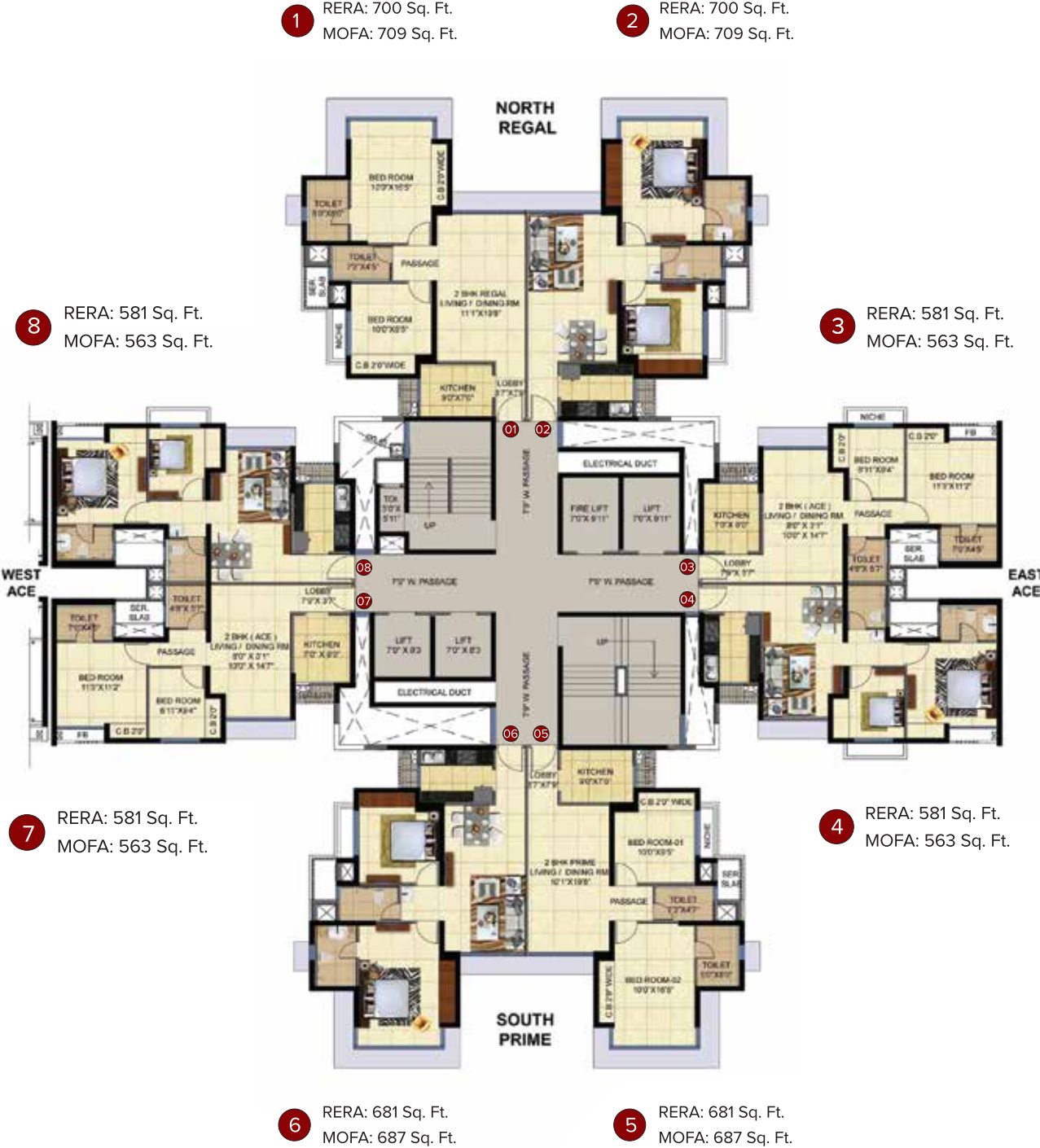
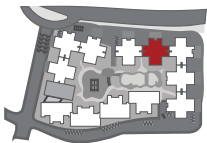
# ALTIS - 2

## Typical Floor Plan (Floors 28 - 32)



# AVIOR - 1 & 2

## Typical Floor Plan (Floors 1- 27)



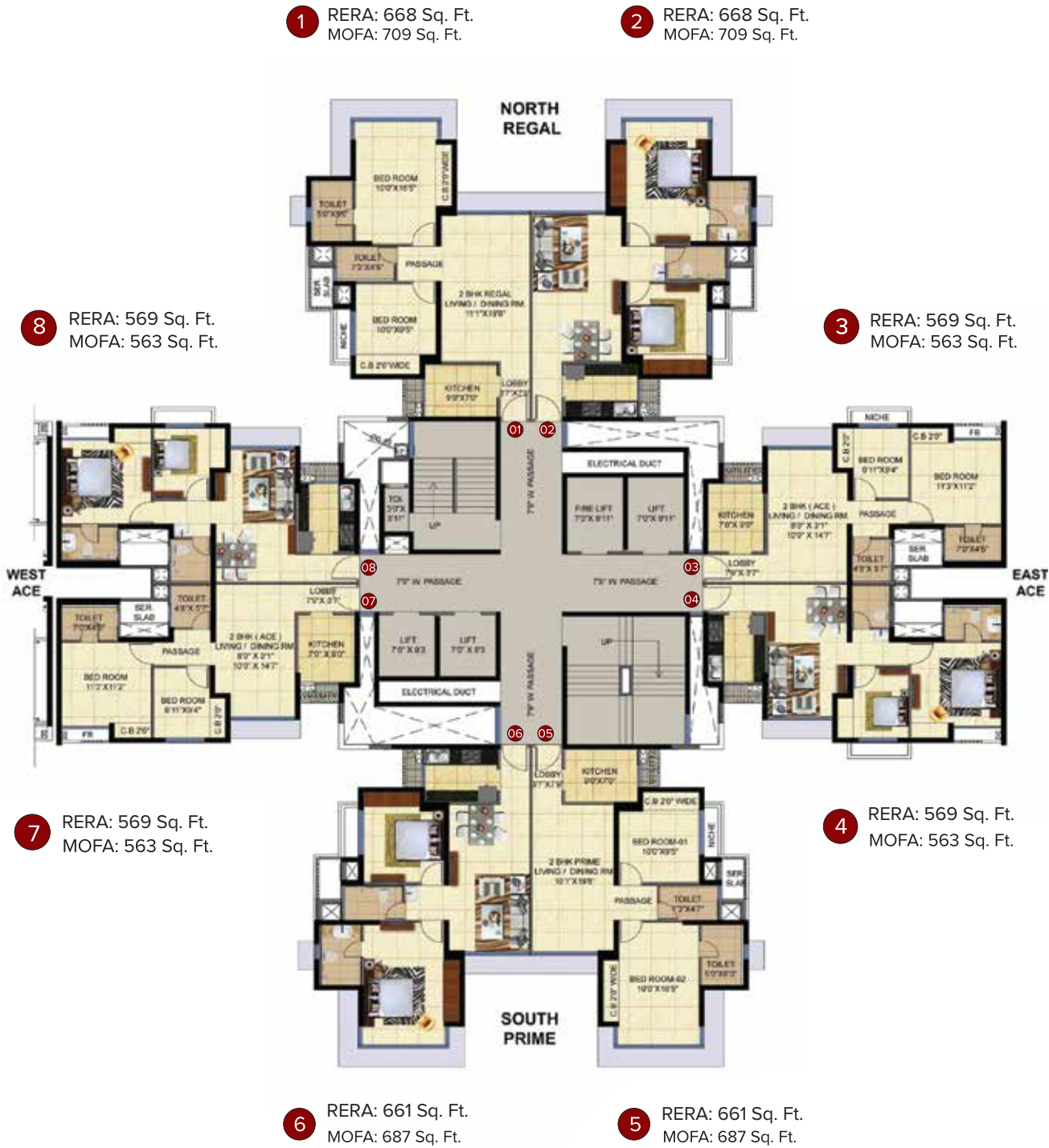
AVIOR-1 (2 Basements + 1st to 24th Floors); Maha RERA: PS2000000502 | AVIOR-2 (Silt + Podium + 25th to 30th Floors); Maha RERA: PS2000000713

All RERA related details are available at <https://maharera.mahonline.gov.in/> as well as our website [marathon.in/en/zone](https://marathon.in/en/zone). Customers are requested to visit the said link for details and update themselves with all the necessary details in respect of the project from time to time. The floor plans are as per the approved plans and specifications as on date. These plans may vary by +/- 3% and are subject to changes. The furniture, accessories, etc. shown in the plans does not form a part of the offering. Customers are requested to visit the site office and apprise themselves of all the necessary details prior to making any purchase decisions.



# AVIOR - 2

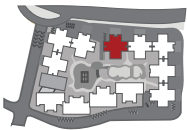
## Typical Floor Plan (Floors 28 - 31)





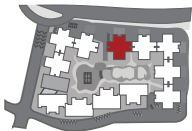
# ACRUX - 1 & 2

## Typical Floor Plan (Floors 1 - 27)



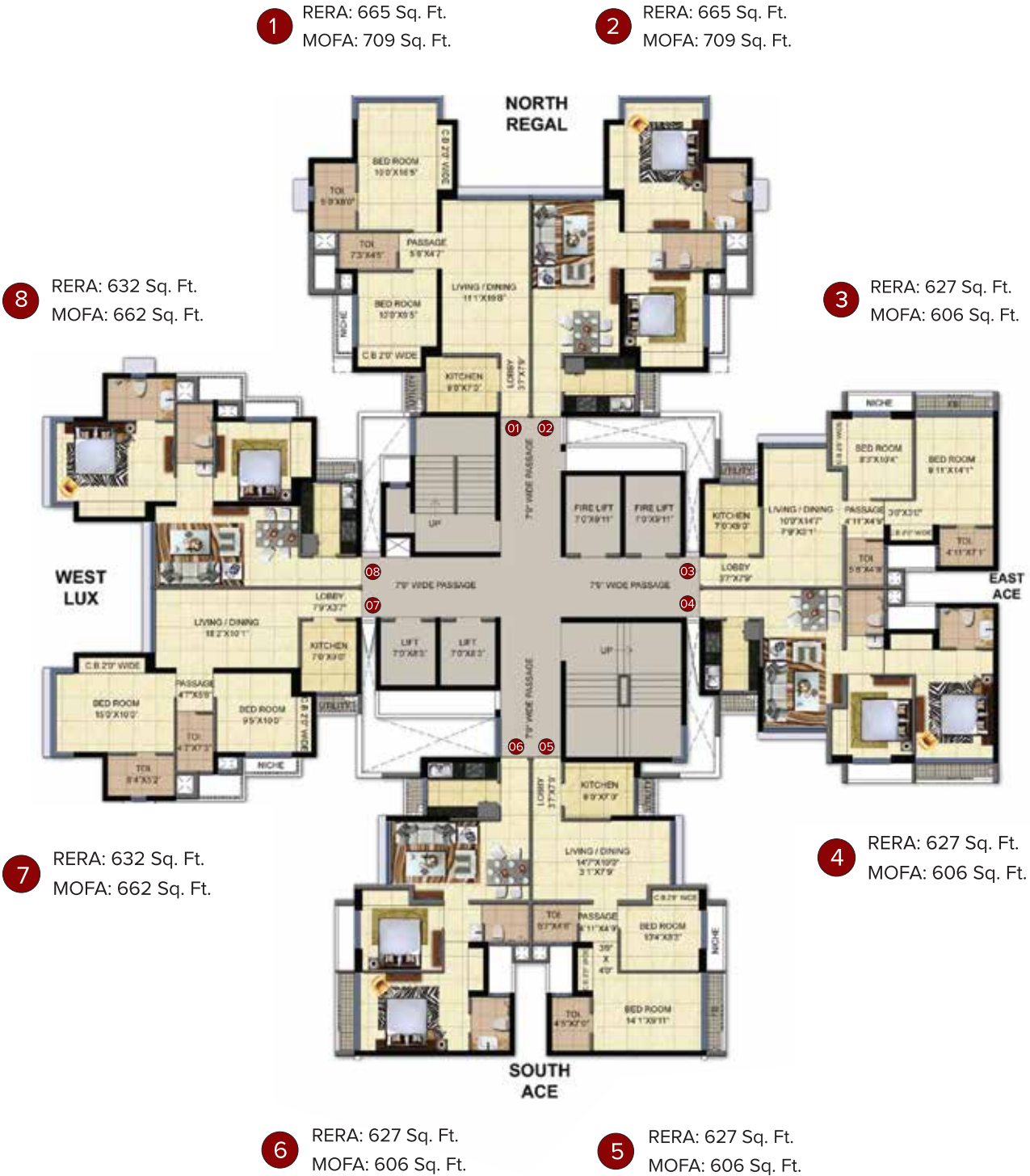
# ACRUX - 2

## Typical Floor Plan (Floors 28 - 31)



# ATLAS - 1 & 2

## Typical Floor Plan (Floors 1 - 30)





# AURA - 1 & 2

Typical Floor Plan (Floors 1 - 30)



# ATRIA - 1 & 2

## Typical Floor Plan (Floors 1 - 30)

